

U.S. PUBLIC LAND SURVEY MONUMENT RECORD

(Prepared and as required by S. A-E 7.08 WI Administrative Code)

THE SOUTH 1/4 CORNER OF SECTION 29, T. 31 N., R. 10 E., LANGLADE COUNTY, WISCONSIN.

CORNER WAS (CHECK ALL THAT APPLY):

- RESTORED THROUGH ACCEPTANCE OF AN OBLITERATED EVIDENCE LOCATION.
- RESTORED THROUGH ACCEPTANCE OF A FOUND PERPETUATED LOCATION.
- DETERMINED TO BE LOST AND RE-ESTABLISHED BY PROPORTIONATE METHODS.
(SHOW BEARINGS AND DISTANCES TO PLSS CORNERS USED FOR PROPORTIONING.)
- RESTORED/RECOVERED/REESTABLISHED IN A LOCATION THAT DIFFERS FROM A PREVIOUSLY ESTABLISHED POSITION.
(SHOW DIFFERENCE IN PLAN VIEW BELOW)
- CHECK HERE IF ADDITIONAL INFORMATION IS SHOWN ON THE REVERSE SIDE OF THIS FORM.

DESCRIBE RECORD EVIDENCE, RECOVERED PHYSICAL EVIDENCE, OCCUPATIONAL EVIDENCE, TESTIMONIAL EVIDENCE AND ALL OTHER EVIDENCE THAT WAS CONSIDERED IN THE RESTORATION/RECOVERY/REESTABLISHMENT OF THE CORNER.

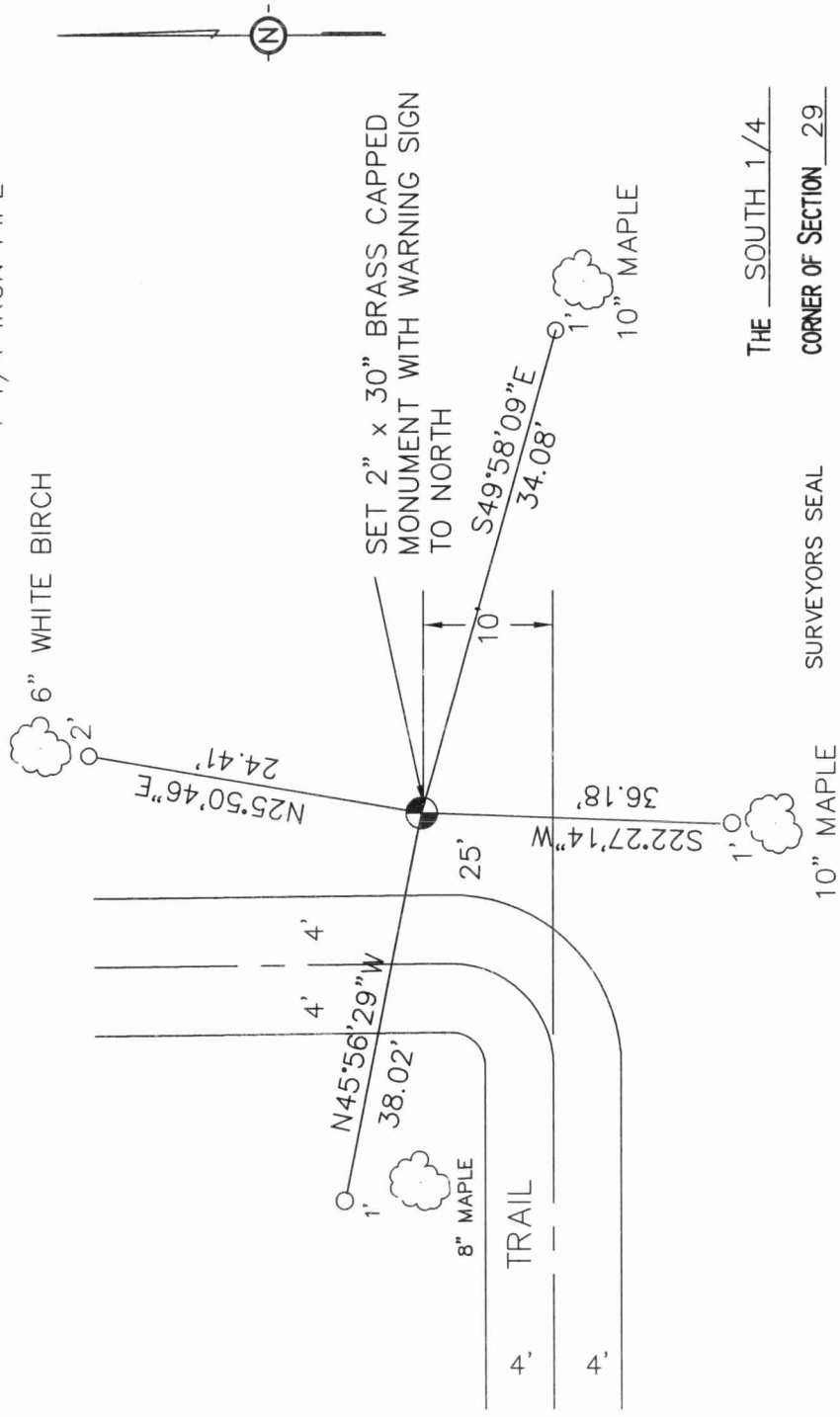
ORIGINAL CORNER SET BY H.C. FELLOWS, SET POST, HEMLOCK 10 N62E 25 LINKS; TAMARACK 10 S14W 10 LINKS

USING 3/4" IRON BAR AT NE CORNER OF SE 1/4, SW 1/4 AND FENCE LINE AT NE CORNER OF NE 1/4, SW 1/4 I DETERMINED BEARIG SOUTHERLY. ALSO USED SAID 40 DISTANCE FOR DISTANCE SOUTH. ADJACENT LAND OWNERS DID NOT KNOW WHERE SECTION CORNER WAS. DISTANCE EAST AND WEST LOOKED GOOD. HELD FOR CORNER, FOUND NO OTHER EVIDENCE TO CONTRADICT CORNER LOCATION. LAND OWNERS WERE SATISFIED.

PHYSICAL DESCRIPTION OF THE MONUMENT SET: SET 2" x 30" BRASS CAPPED MONUMENT STAMPED AS SHOWN ON BACK.

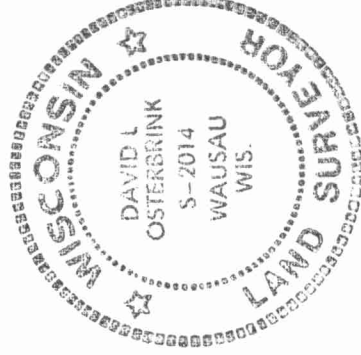
DESCRIBE THE ACCESSORIES USED TO PERPETUATE THE LOCATION OF THE CORNER. INCLUDE A PLAN VIEW DRAWING AND INDICATE ACCESSORIES FOUND AND SET. DESCRIBE THE MEASURING POINT ON BEARING TREES. SHOW ANY TOPOGRAPHIC FEATURES THAT WOULD AID IN THE FUTURE RECOVERY OF THE CORNER.

ALL WITNESS CORNERS
1 1/4 IRON PIPE



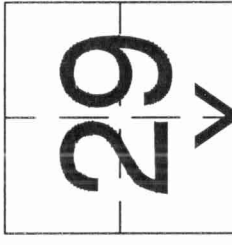
Bearings - referenced to section lines shown on reverse side.

THE SOUTH 1/4
CORNER OF SECTION 29
T. 31 N., R. 10 E.
LANGLADE COUNTY, WI



I, DAVID L. OSTERBRINK, CERTIFY THAT THE CORNER LOCATION SHOWN ON THIS RECORD WAS DETERMINED BY ME OR UNDER MY DIRECTION AND CONTROL AND THAT THIS U.S. PUBLIC LAND SURVEY MONUMENT RECORD IS CORRECT AND COMPLETE TO THE BEST OF MY KNOWLEDGE AND BELIEF.

David L. Osterbrink
SIGNATURE 11-24-98 DATE



O = LOCATION OF CORNER

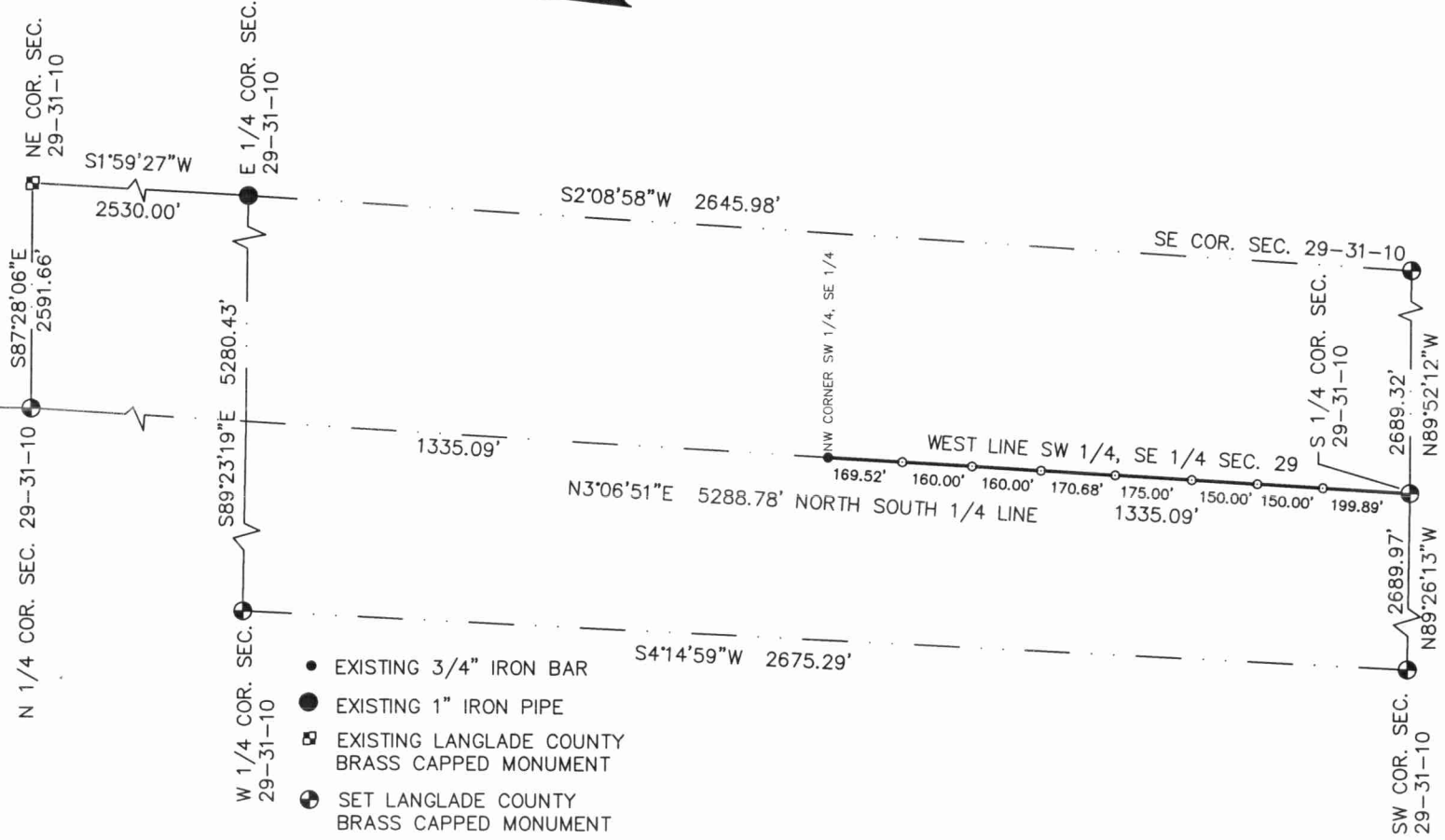
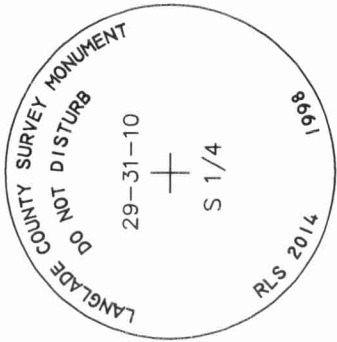
INDEX No. 43110290020

43110290020

SECTION SUMMARY 29-31-10

← PLOW COLLAR

S0°46'34"E
2485.93' M
2476.32' BROOKS DISTANCE



- EXISTING 3/4" IRON BAR
- EXISTING 1" IRON PIPE
- ▣ EXISTING LANGLEDE COUNTY BRASS CAPPED MONUMENT
- ⊕ SET LANGLEDE COUNTY BRASS CAPPED MONUMENT
- SET 1-1/4" x 24" IRON PIPE WEIGHING 2.27 LBS./LIN. FT.