

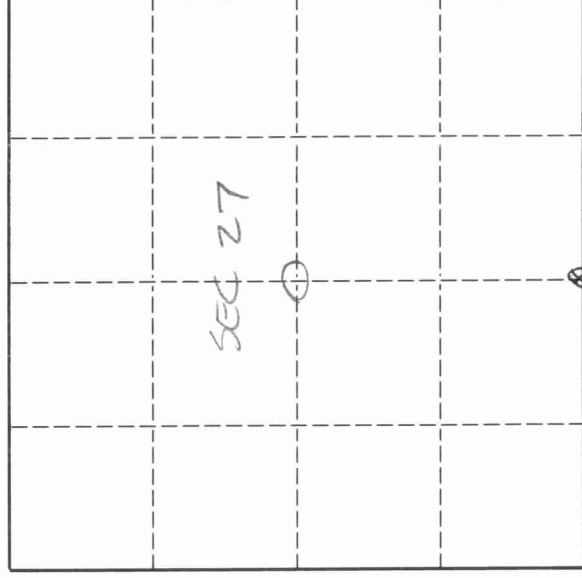
43110272000

U. S. PUBLIC LAND SURVEY MONUMENT RECORD

INSTRUCTIONS:

This record shall show the location of the corner and shall include all of the following nine elements (a through i).

- (a) Identify the corner by reference to the U.S. public land survey system.
- O = Corner monument restored.

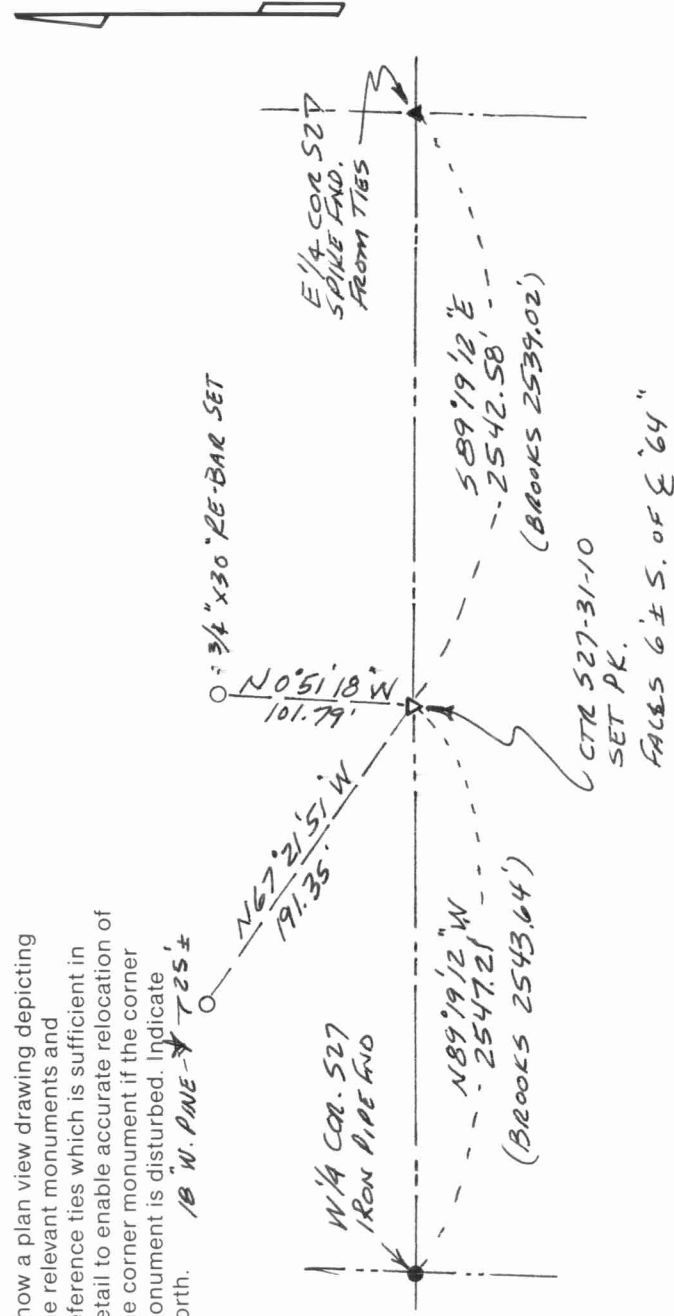


T. 31 N., R. 10 E.

The Center of
 Section 27,
 Township 31 North,
 Range 10 East,
 Langlade County,
 Wisconsin.

- (b) Describe any record evidence, monument evidence, occupational evidence, testimonial evidence or any other material evidence you considered, and whether the monument was found or placed.
 This corner was not set in the original government survey. FB140-117, Deleglise, date unknown, did work in Section 27 and measured 5087.28' on the E-W quarter line. Brooks, 1907, found stake set by former surveyor and set stone. Hutchinson, 1929, Found stone. Marked an elm BT for a pipe set on the E-W quarter line, 4306.5' west of the E1/4 corner. 3/94 I re-set this corner by proportioning east and west, based on Brooks' distances. Set PK for corner. This location falls about 6' south of the center of S.T.H. "64" and in line with an old fence to the north. This location also fits with the recovered elm BT that Hutchinson made note of.
- (c) In the plan view drawing below, provide reference ties to at least 4 witness monuments, or, if the location is within a municipality, to at least 2 witness monuments. (Witness monuments shall be made of concrete, natural stone, iron or other equally durable material.)
 Describe witness monuments.

- (d) Show a plan view drawing depicting the relevant monuments and reference ties which is sufficient in detail to enable accurate relocation of the corner monument if the corner monument is disturbed. Indicate north. 18" W. PINE - 725±



T15

43110272020

Describe any material discrepancy between the location of the corner as restored or reestablished and the location of that corner as previously restored or reestablished by distance and direction. Show the discrepancy on the plan view drawing under (d), above. Show the distances between the corner as previously restored or reestablished and (1) the corner as restored or reestablished, and (2) to at least 2 of the witness monuments shown on the drawing in (d), above.

Kelly's map #30442 shows a computed center at a point 2521.72' west of the East Quarter corner. From the center of section that I set, I measure 2542.58' to the East Quarter corner.

(f) Was the corner restored through acceptance of (1) an obliterated evidence location, or, (2) a found perpetuated location?
An obliterated evidence location.

(g & h) Was the corner reestablished through lost corner proportionate methods? If so, show the method, including the directions and distances to other public land survey corners used as evidence or used for proportioning in determining the corner location.

Yes.

SEE MY MAP OF NW 1/4 527 IN FILES. MAP DATED 3/13/94



(i) I, David E. Tlusty, Langlade County Surveyor
(type or print name)

certify that the corner location shown on this record was determined by me or under my direction and control and that this U.S. Public Land Survey Monument Record is correct and complete to the best of my knowledge and belief.

David E. Tlusty 4/2/02
Signature Date