

4311027 2000 2014

LANGLADE COUNTY U.S. PUBLIC LAND SURVEY MONUMENT LOCATION RECORD

SECTION 27
TOWNSHIP 31 N
RANGE 10 E

T-17
NO.

LANDMARK BENCHMARK
CORNER IDENTITY: E1/4 CORNER SEC. 27 (BERNTSEN SNM-1 NAIL)

FOUND
SET
RESET
RE-TIED

ACKLEY
CITY, VILLAGE, TOWN
SECTION

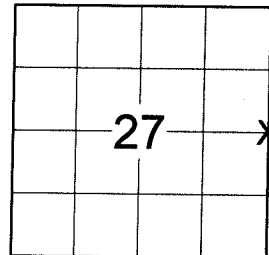
LANGLADE COUNTY COORDINATE: N: 340204.117
E: 602908.131

ELEVATION-(FEET): _____ DATUM: _____

WEATHER: PARTLY SUNNY

DATE OF SURVEY: 8/7/2014 TEMPERATURE: 74 °F

SURVEY PARTY: CHRIS FIERI & IAN FIELD



BASIS FOR MONUMENT LOCATION:

(DESCRIBE METHOD OF SURVEY AND CORNER AUTHENTICATION)

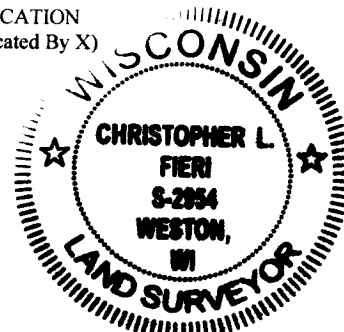
9/1860 - H.C. Fellows established the original corner.

6/5/1990 - William Kelly S-1098 recovered an Iron Pipe under a Railroad Spike at the corner location. This monument was identified by adjoining property owner as being the corner. Accepted the iron pipe as the corner location and set a Langlade County Aluminum Witness Monument North of the corner. Also made three (3) bearing trees to perpetuate the corner location.

6/8/1992 - W. Meyer, WISDOT Survey Crew Chief, found a P.K. Nail at the corner location along with the Langlade County Monument set by Kelly. Set four (4) iron bar witness monuments with WISDOT caps to perpetuate the corner location.

8/7/2014 - I visited this corner prior to road construction and recovered a gear headed spike at the corner location. Found three (3) iron bar capped witness monuments from the previous tie sheet and the Langlade County Monument North of the corner. All distances to witness monuments checked well. Set four (4) Berntsen Witness Monuments and returned after the re-surfacing of State Highway "64" to set a Berntsen SNM-1 Nail at the corner location.

LOCATION
(Indicated By X)



CERTIFIED CORRECT:

Christopher L. Fieri

CHRISTOPHER L. FIERI S-2954

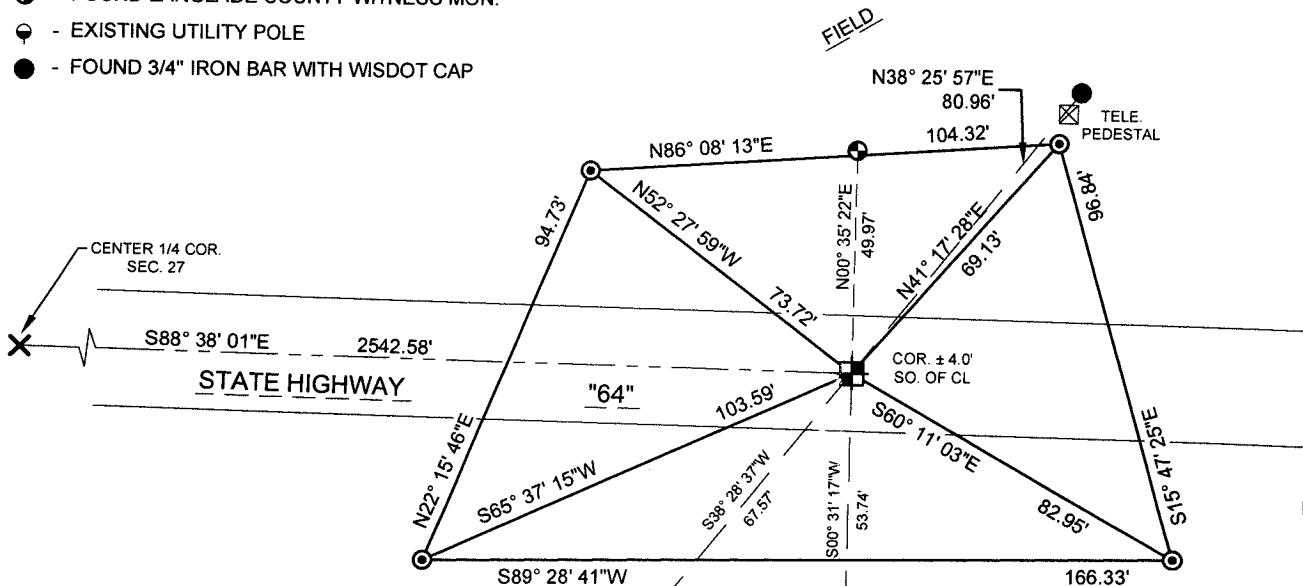
Registered Land Surveyor

DATE: 10-9-2014

TIE SKETCH:

- BERNTSEN SNM-1 NAIL SET
- BERNTSEN SDR130 MONUMENT SET
- FOUND LANGLADE COUNTY WITNESS MON.
- EXISTING UTILITY POLE
- FOUND 3/4" IRON BAR WITH WISDOT CAP

BEARINGS ARE BASED ON THE LANGLADE COUNTY COORDINATE SYSTEM NAD 83 (2011) AND REFERENCED TO THE NORTH LINE OF THE SOUTHEAST 1/4 OF SEC. 27, T31N, R10E, MEASURED TO BEAR S88° 38' 01"E



T-17
NO.

FIELD BOOK NO. S-12 PAGE NO. 55

COMPANY RIVERSIDE LAND SURVEYING LLC

POLE #
3110-27R7