

431027 0020

# U.S. PUBLIC LAND SURVEY MONUMENT RECORD

(Prepared and as required by S. A-E 7.08 WI Administrative Code)

The NORTH 1/4 corner of Section 34, T. 31 N., R. 10 E., Langlade County, WI  
Corner was (check all that apply)

- Restored through acceptance of an obliterated evidence location.
- Restored through acceptance of a found perpetuated location.
- Determined to be lost and re-established through proportionate methods. (show bearings and distances to PLSS corners used for proportioning.)
- Restored/recovered/re-established in a location that differs from a previously established position. (Show difference in plan view below.)
- Check here if additional information is shown on the reverse side of this form.

### Describe record evidence, recovered physical evidence, occupational evidence, testimonial evidence, and all other evidence considered in the recovery/restoration of the corner.

1851 - Government Surveyor H.C. Fellows set original quarter section post and referenced bearing trees, Ash 8", N 67° W, 14 links, Hemlock 10", S 78° E, 25 links.

1921 - Surveyor Brooks, working in Section 27, references two new Bits, Hemlock 12" N59°E, 21 links, and Hemlock 18", N58°W, 17 links.

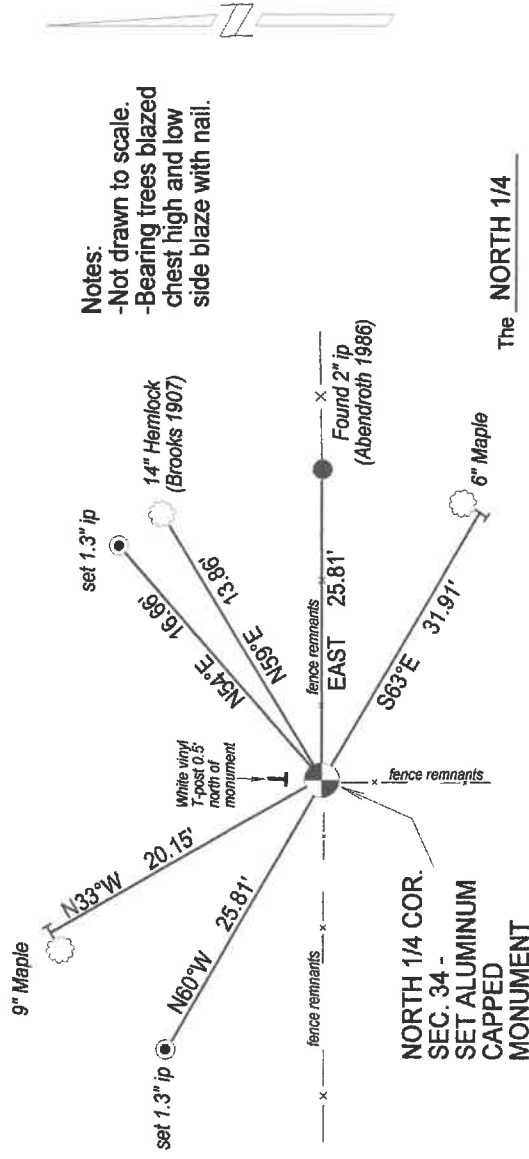
1986 - Surveyor Abendroth, set a 2" iron pipe using old fence line and an old blazed popple as best evidence. Abendroth made 4 new bearing trees and prepared a mourment record for corner.

2016 - Working with Langlade County Surveyor Dave Tlusty, previous work done in the early 1900's would indicate the corner should be approximately 30 feet west of where Abendroth set it in 1986. We searched the area for any evidence of ties from previous survey work and found a very old Hemlock believed to be the 12" Hemlock N59°E referenced by Brooks in 1907. This position is approximately 25.8 feet west of Abendroth's corner. We set an aluminum monument at the record bearing and distance from the Hemlock.

### Physical description of the monument set:

We set a 1" aluminum pipe with a 3" aluminum cap at the corner location and tied it out as shown below.

Describe the accessories used to perpetuate the location of the corner. Include a plan view drawing and indicate accessories found/set. Describe measuring point on bearing trees. Show any topographic features that would aid in future recovery of the corner.



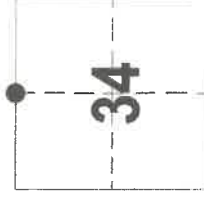
The NORTH 1/4 Corner of Section 34, T. 31 N., R. 10 E., Langlade County, WI

SURVEYOR'S SEAL



I, Timothy J. Rusch certify that the corner location shown on this record was determined by me or under my direction and control and that this U.S. Public Land Survey Monument Record is correct and complete to the best of my knowledge and belief.

Timothy J. Rusch 07-21-2020  
Signature Date



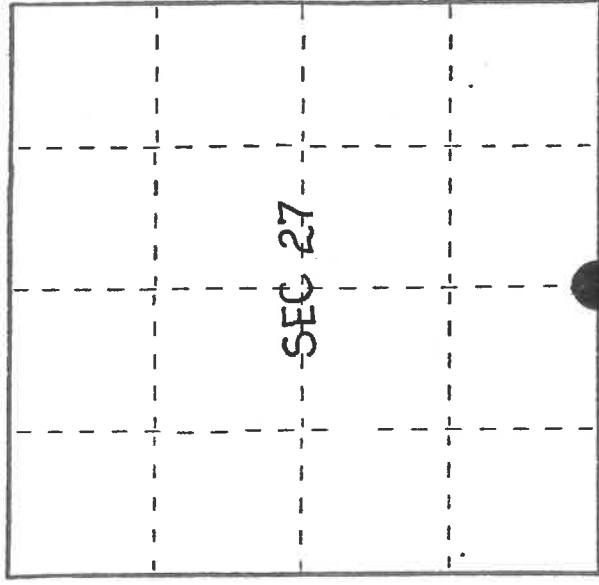
● = Location of corner

4316270020

# U. S. PUBLIC LAND SURVEY MONUMENT RECORD

**I N S T R U C T I O N S :** This record shall show the location of the corner and shall include all of the following nine elements (a through i).

- (a) Identify the corner by reference to the U.S. public land survey system.
- O = Corner monument restored.



T31N, R10E TOWN OF ACKLEY

**SOUTH 1/4 CORNER SEC. 27,  
T31N, R10E, TOWN OF ACKLEY,  
LANGLADE COUNTY, WISCONSIN**

- (b) Describe any record evidence, monument evidence, occupational evidence, testimonial evidence or any other material evidence you considered, and whether the monument was found or placed.

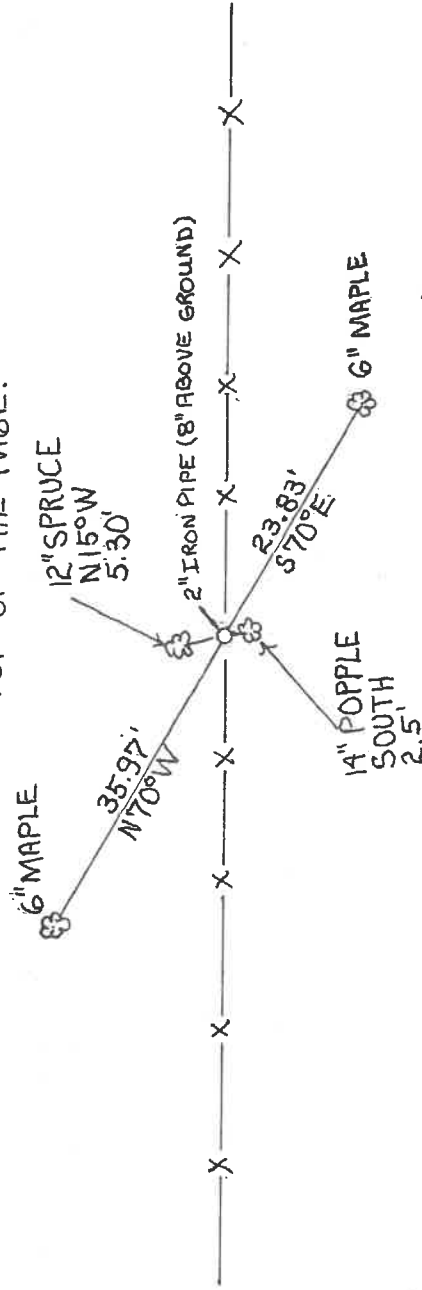
MONUMENT WAS NOT FOUND. 2" IRON PIPE WAS SET USING A OLD FENCE LINE AND, OLD BLAZED POPPLE AS BEST EVIDENCE. DISTANCE & LOCATION COMPUTED BY USE OF TRAVERSE DATA.

*THIS NOTE ADDED 9/19/94  
AN EXTENSION OF THE N-1/2 OF THE N-S 1/4 LINE & AN OLD DISTANCE FROM THE SE COR WOULD INDICATE THAT THIS CORNER COULD PROBABLY MOVE 25'-33' TO THE WEST. MIGHT BE OLD BT'S. SEE OLD NOTES*

- (c) In the plan view drawing below, provide reference ties to at least 4 witness monuments, or, if the location is within a municipality, to at least 2 witness monuments. (Witness monuments shall be made of concrete, natural stone, iron or other equally durable material.) Describe witness monuments.

- (d) Show a plan view drawing depicting the relevant monuments and reference ties which is sufficient in detail to enable accurate relocation of the corner monument if the corner monument is disturbed. Indicate north.

6" MAPLE, 6" MAPLE, 12" SPRUCE ARE NEW BEARING TREES. NEW BT'S WERE SIDE BLAZED W/ NAIL PLACED IN BLAZE. 14" POPPLE WAS AN OLD LINE TREE. SCALE 1" = 20'. NORTH IS TO TOP OF THE PAGE.



(e) Describe any material discrepancy between the location of the corner as restored or reestablished and the location of that corner as previously restored or reestablished by distance and direction. Show the discrepancy on the plan view drawing under (d), above. Show the distances between the corner as previously restored or reestablished and (1) the corner as restored or reestablished, and (2) to at least 2 of the witness monuments shown on the drawing in (d), above.

N/A

4310270020

(f) Was the corner restored through acceptance of (1) an obliterated evidence location, or, (2) a found perpetuated location?

1) AN OBLITERATED EVIDENCE LOCATION

(g&h) Was the corner reestablished through lost corner proportionate methods? If so, show the method, including the directions and distances to other public land survey corners used as evidence or used for proportioning in determining the corner location?

NO

(1) I, EDWIN R. ABENDROTH

(type or print name) certify that the corner location shown on this record was determined by me or under my direction and control and that this U.S. Public Land Survey Monument Record is correct and complete to the best of my knowledge and belief.

*Edwin R. Abendroth*

Signature

June 22, 1986

Date

Affix Land Surveyor Seal

