

LANGLADE COUNTY U.S. PUBLIC LAND SURVEY MONUMENT LOCATION RECORD

4311026 2000 2014

SECTION 26
TOWNSHIP 31 N
RANGE 10 E

T-21
NO.

LANDMARK BENCHMARK _____

FOUND
SET
RESET
RE-TIED

CORNER IDENTITY: E1/4 CORNER SEC. 26 (BERNTSEN SNM-1 NAIL)
LANGLADE COUNTY COORDINATE: N: 340319.595
E: 608196.398

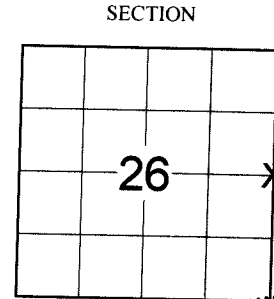
ELEVATION-(FEET): _____ DATUM: _____

WEATHER: PARTLY SUNNY

DATE OF SURVEY: 8/7/2014 TEMPERATURE: 74 °F

SURVEY PARTY: CHRIS FIERI & IAN FIELD

ACKLEY
CITY, VILLAGE, TOWN



LOCATION (Indicated)



BASIS FOR MONUMENT LOCATION: (DESCRIBE METHOD OF SURVEY AND CORNER AUTHENTICATION)

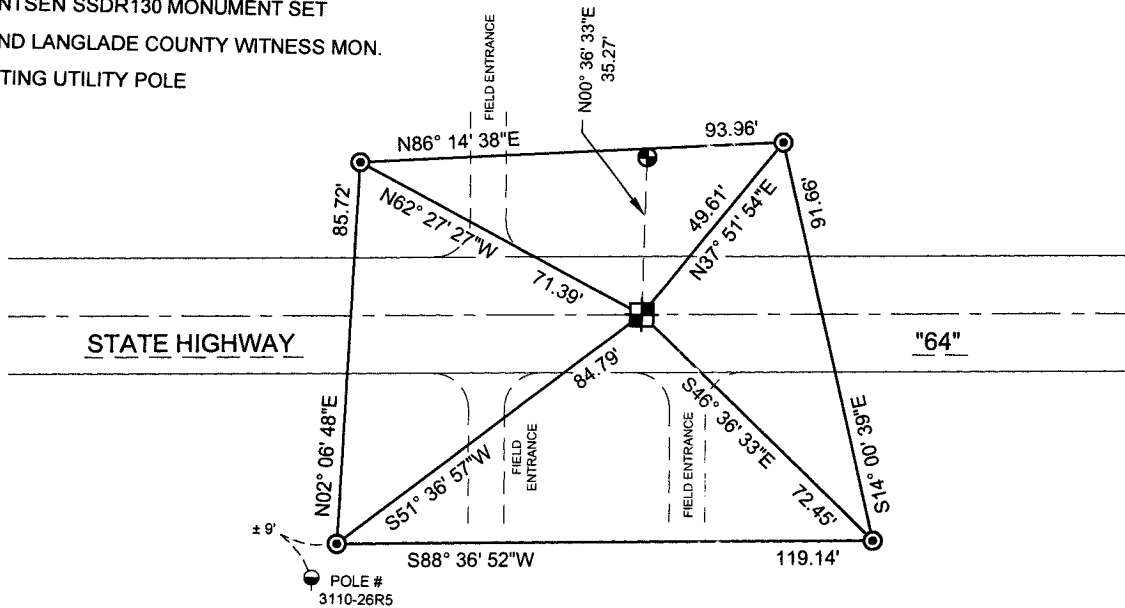
9/1860 - H.C. Fellows established the original corner.
11/1/1990 - William Kelly S-1098 recovered a Railroad Spike at the corner location. Accepted the spike as the corner location and set a Langlade County Aluminum Witness Monument North of the corner. He also set two (2) iron pipe witness monuments and measured to a P.K. Nail in a power pole to perpetuate the corner location.
6/8/1992 - W. Meyer, WISDOT Survey Crew Chief, found a P.K. Nail at the corner location along with the Langlade County Monument set by Kelly. Set four (4) iron bar witness monuments with WISDOT caps.
8/7/2014 - I visited this corner prior to road construction and recovered a P.K. nail at the corner location. Searched for all witness monuments from the previous tie sheets and only recovered the Langlade County Monument North of the corner. Set four (4) Berntsen Witness Monuments and returned after the re-surfacing of State Highway "64" to set a Berntsen SNM-1 Nail at the corner location.

CERTIFIED CORRECT:
Christopher L. Fieri
CHRISTOPHER L. FIERI S-2954
Registered Land Surveyor
DATE: 10-9-2014

TIE SKETCH:

- BERNTSEN SNM-1 NAIL SET
- BERNTSEN SSDR130 MONUMENT SET
- FOUND LANGLADE COUNTY WITNESS MON.
- EXISTING UTILITY POLE

BEARINGS ARE BASED ON THE LANGLADE COUNTY COORDINATE SYSTEM NAD 83 (2011) AND REFERENCED AS SHOWN



T-21
NO.

FIELD BOOK NO. S-12 PAGE NO. 54

COMPANY RIVERSIDE LAND SURVEYING LLC