

U.S. PUBLIC LAND SURVEY MONUMENT RECORD

(Prepared and as required by S. A-E 7.08 WI Administrative Code)

THE WEST QUARTER CORNER OF SECTION 30, T. 31 N., R. 11 E., LANGLADE COUNTY, WISCONSIN.

CORNER WAS (CHECK ALL THAT APPLY):

- RESTORED THROUGH ACCEPTANCE OF AN OBLITERATED EVIDENCE LOCATION.
- RESTORED THROUGH ACCEPTANCE OF A FOUND PERPETUATED LOCATION.
- DETERMINED TO BE LOST AND RE-ESTABLISHED BY PROPORTIONATE METHODS.
(SHOW BEARINGS AND DISTANCES TO PLSS CORNERS USED FOR PROPORTIONING.)
- RESTORED/RECOVERED/REESTABLISHED IN A LOCATION THAT DIFFERS FROM A PREVIOUSLY ESTABLISHED POSITION.
(SHOW DIFFERENCE IN PLAN VIEW BELOW)
- CHECK HERE IF ADDITIONAL INFORMATION IS SHOWN ON THE REVERSE SIDE OF THIS FORM.

43110252000

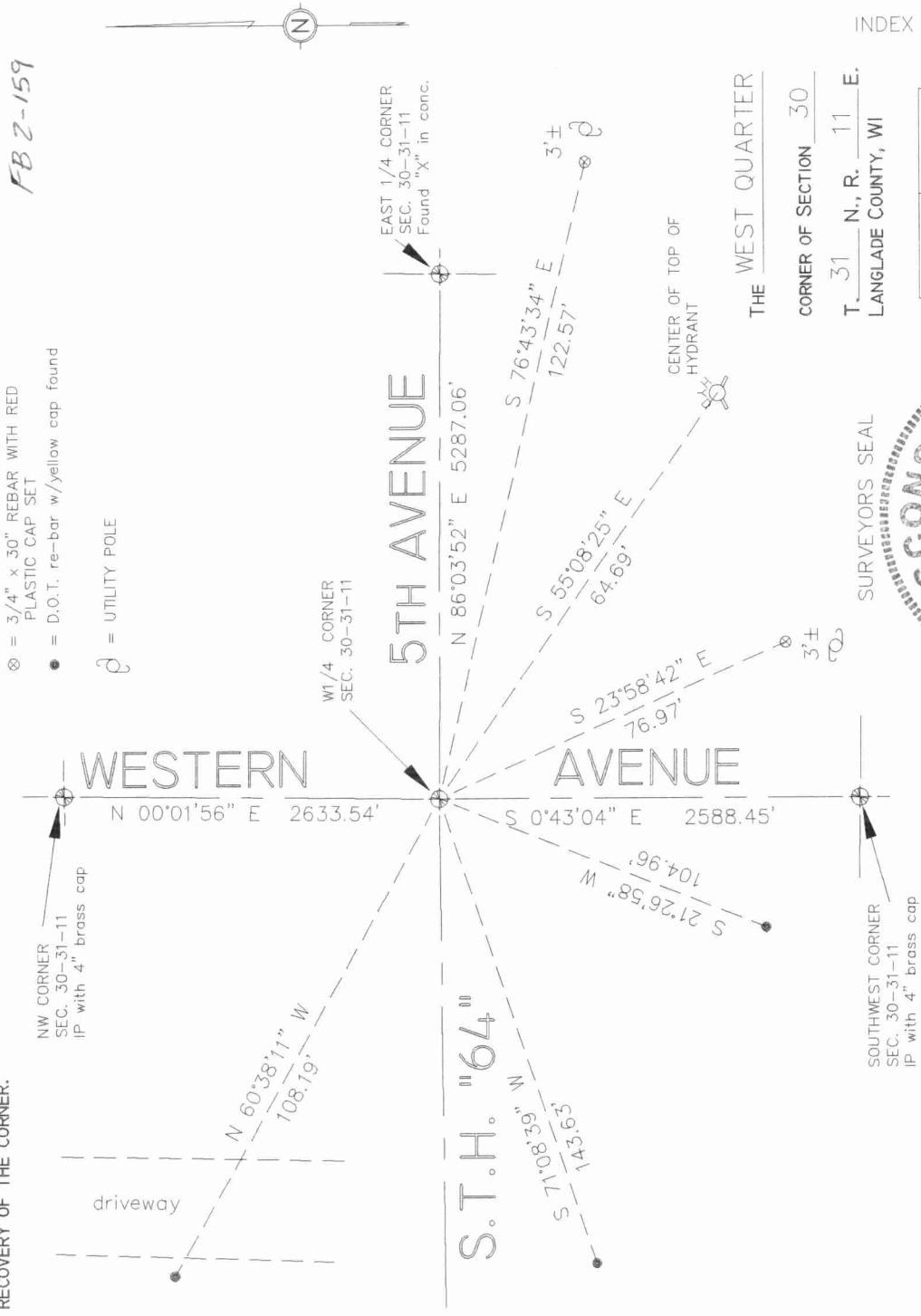
DESCRIBE RECORD EVIDENCE, RECOVERED PHYSICAL EVIDENCE, OCCUPATIONAL EVIDENCE, TESTIMONIAL EVIDENCE AND ALL OTHER EVIDENCE THAT WAS CONSIDERED IN THE RESTORATION/RECOVERY/REESTABLISHMENT OF THE CORNER.

The original corner was established in 1859 by Hiram C. Fellows. Original BT's: elm, 20", N 50° E, 18 lks., and a maple, 15", S 10° W, 12 lks. In 1884, Dorr mentions this corner but doesn't describe it. In 1888, Dorr measured 5357.9' from this corner to the 1/4 corner to the West, but didn't describe this corner. In July, 1978, Gary Radtke found existing RR spike at the intersection of 5th & Western, and set brass cap and 4 power pole ties. 06/93 Dave Tlusty, Steve Fiskars dug with backhoe and bulldozer. Found nothing. Accepted the location of Radtkes brass cap as the best evidence of the corner. WIDOT plans drawn in 1992 show the distance to the 1/4 corner to the West as 5354.88' which is in good agreement with Dorr's distance. Made temporary ties. 11/21/96 Dave Tlusty set broken Berntsen SN-1 nail from remaining ties. Remeasured all ties as shown below.

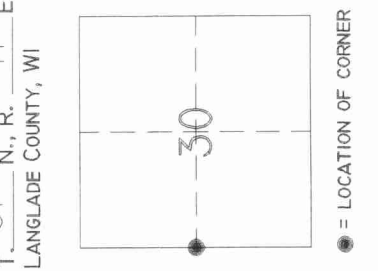
PHYSICAL DESCRIPTION OF THE MONUMENT SET:

Set broken Berntsen SN-1 nail (3/8" x 2 3/4") from remaining ties.

DESCRIBE THE ACCESSORIES USED TO PERPETUATE THE LOCATION OF THE CORNER. INCLUDE A PLAN VIEW DRAWING AND INDICATE ACCESSORIES FOUND AND SET. DESCRIBE THE MEASURING POINT ON BEARING TREES. SHOW ANY TOPOGRAPHIC FEATURES THAT WOULD AID IN THE FUTURE RECOVERY OF THE CORNER.



INDEX No. T-1



David E. Tlusty
Langlade County Surveyor,
CERTIFY THAT THE
CORNER LOCATION SHOWN ON THIS RECORD WAS DETERMINED BY ME OR UNDER
MY DIRECTION AND CONTROL AND THAT THIS U.S. PUBLIC LAND SURVEY
MONUMENT RECORD IS CORRECT AND COMPLETE TO THE BEST OF MY KNOWLEDGE
AND BELIEF.

David E. Tlusty

DATE 12/17/96

