

4311025020

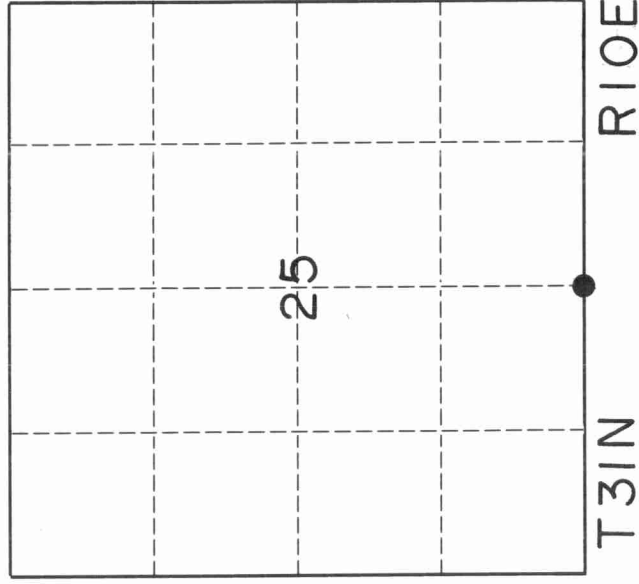
U. S. PUBLIC LAND SURVEY MONUMENT RECORD

I N S T R U C T I O N S:

This record shall show the location of the corner and shall include all of the following nine elements (a through i).

- (a) Identify the corner by reference to the U.S. public land survey system.
- O = Corner monument restored.

This corner was originally set by Hiram C. Fellows in 1860.





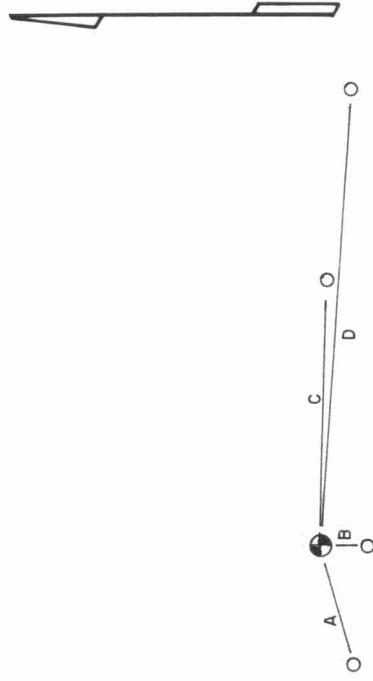
- (b) Describe any record evidence, monument evidence, occupational evidence, testimonial evidence or any other material evidence you considered, and whether the monument was found or placed.

Since the original survey, very little perpetuation work has been completed in Section 25. I completed an extensive traverse of the entire area to attempt to determine the best location for this corner. With all the agricultural activities it is difficult to find any evidence at all. Because of the large fields even occupation evidence is sketchy. I decided to use a single proportion distance from the SW corner of Section 25 (which we set) to the SE corner of Section 25 to set this corner.

- (c) In the plan view drawing below, provide reference ties to at least 4 witness monuments, or, if the location is within a municipality, to at least 2 witness monuments. (Witness monuments shall be made of concrete, natural stone, iron or other equally durable material.) Describe witness monuments.

- (d) Show a plan view drawing depicting the relevant monuments and reference ties which is sufficient in detail to enable accurate relocation of the corner monument if the corner monument is disturbed. Indicate north.

 SET BRASS CAP MON
 O SET 5/8" I PIN



A = S 74° 36' 30" W - 19.66'
 B = S 0° 22' 34" E - 7.62'
 C = S 88° 52' 22" E - 41.32'
 D = S 87° 05' 24" E - 71.38'

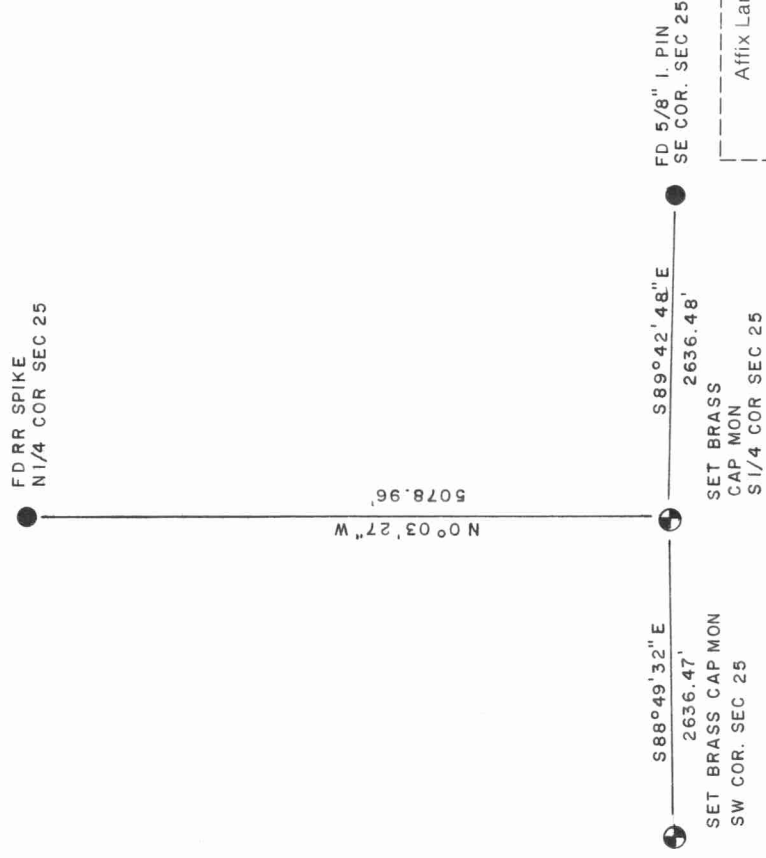
V23

43110250020

Describe any material discrepancy between the location of the corner as restored or reestablished and the location of that corner as previously restored or reestablished by distance and direction. Show the discrepancy on the plan view drawing under (d), above. Show the distances between the corner as previously restored or reestablished and (1) the corner as restored or reestablished, and (2) to at least 2 of the witness monuments shown on the drawing in (d), above.

(f) Was the corner restored through acceptance of (1) an obliterated evidence location, or, (2) a found perpetuated location.?

(g & h) Was the corner reestablished through lost corner proportionate methods? If so, show the method, including the directions and distances to other public land survey corners used as evidence or used for proportioning in determining the corner location.



(i) I, Daniel E. Higginbotham
(type or print name)

certify that the corner location shown on this record was determined by me or under my direction and control and that this U.S. Public Land Survey Monument Record is correct and complete to the best of my knowledge and belief.

Signature

December 3, 1993

Date