

CERTIFIED LAND CORNER RESTORATION

Index No. V-1  
31-10

State of Wisconsin }  
County of Lanlade } ss.

History of original corner establishment:

Corner reset in the 1930 resurvey.

I, Raymond J. Hallisy, do hereby certify that on the 13th day of December, 1980, I found evidence of the Section corner of 25, 36, 30, & 31 Township 31, North, Range 9 & 10E, Fourth Principal Meridian, as described hereon; and that from this evidence I established a new monument and accessories as described hereon to perpetuate the original location of this corner.

Description of corner evidence found:

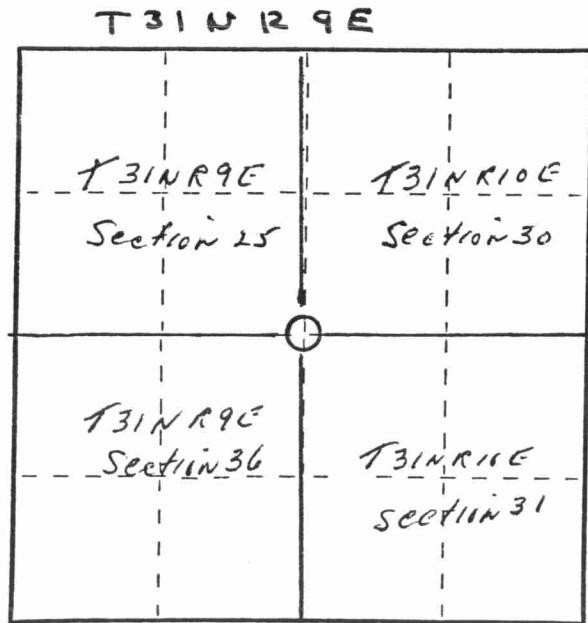
4" pipe with brass cap, Location poster about 7 chains West on old trail on a steel Fence post.

Resident witnesses:

Description of monument and accessories I established to perpetuate the original location of this corner.

New BT's

- 6" White Birch S86W 31'9"
- 6" Red Maple N70W 21'3"
- 6" Red Maple S70W 24'7"



○ = Corner monument restored.

Dated at Antigo, Wis., this 13th day of December, 1980.

Signature Raymond J. Hallisy Title Reg. Surveyor Registration No. S-685  
(County Surveyor, Registered Land Surveyor, or other duly authorized official)

Office of Register of Deeds, County of \_\_\_\_\_, I hereby certify that the within instrument was filed in this office for record on the \_\_\_\_\_ day of \_\_\_\_\_, 19\_\_\_\_ at \_\_\_\_\_ o'clock \_\_\_\_\_ M.

(Register of Deeds)

By \_\_\_\_\_ Deputy

FORM 985 H. C. MILLER CO., MILWAUKEE

4310925607

