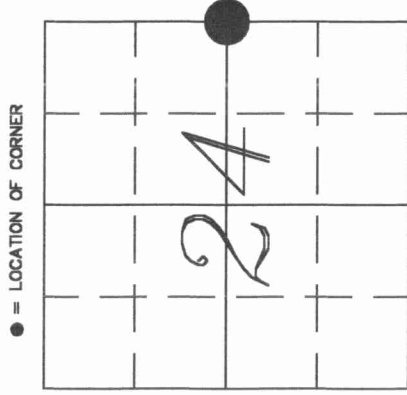


U.S. PUBLIC LAND SURVEY MONUMENT RECORD

4310247000

HISTORY OF ORIGINAL CORNER ESTABLISHMENT AND SUBSEQUENT RESTORATION AND DESCRIPTION OF ANY RECORD, MONUMENT OCCUPATIONAL, TESTIMONIAL OR OTHER EVIDENCE CONSIDERED:

The original 1/4 corner was established in 1859 by Hiram C. Fellows. Original Bearing Trees: White Pine 24" N45W 20lks., Hemlock 10" N60E 13lks. In December, 1977, Gary Radtke set a 2" Brass Capped Pipe at this location with an history explanation "Re-Divided complete Section 19, T31N, R11E". In June of 1992, Tom Armatt used an "Iron Pipe Found" at this 1/4 Corner location for a CSM (Map#298872 Vol 5 Page 069). On Nov 9, 2000, Dan Higginbotham and Gerry Bahar searched for corner and found nothing. We used Arnett's CSM corner 33' to the West and his record distance to a found monument at the NE Cor of Section 24 to the North. We set a Mag Nail and tied out.



● = LOCATION OF CORNER

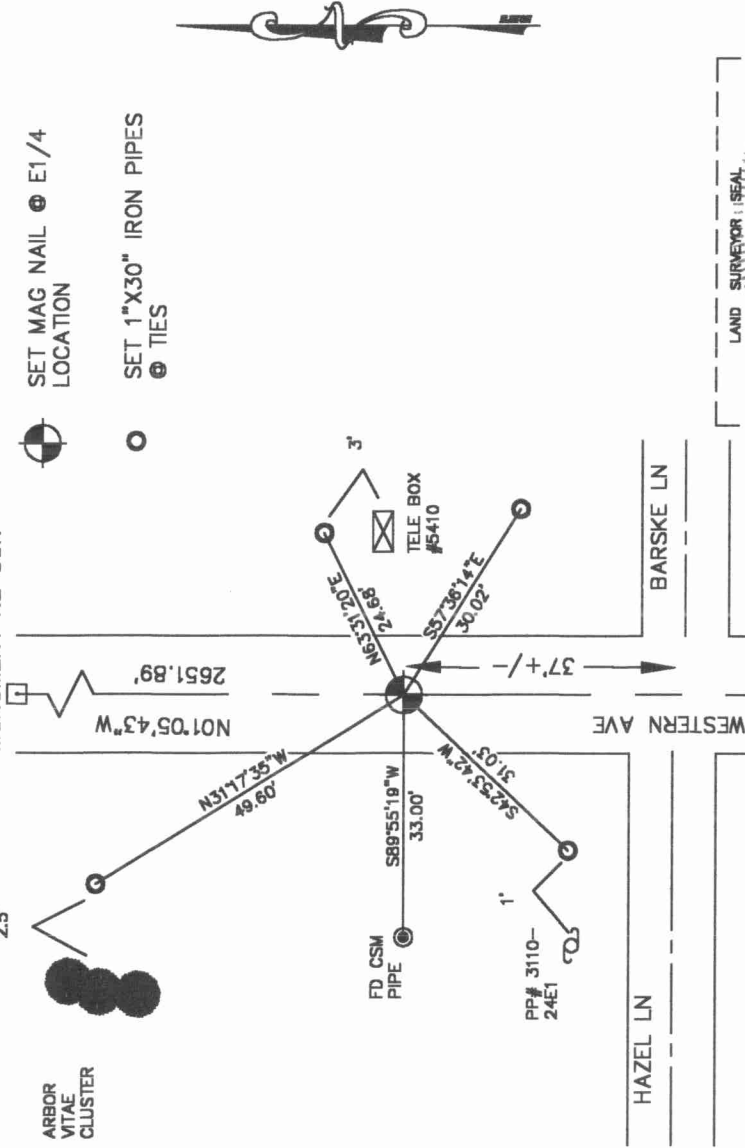
SECTION 24
TOWNSHIP 31 NORTH, RANGE 10 EAST
TOWN OF ACKLEY
LANGLADE COUNTY, WISCONSIN

CORNER WAS: (CHECK ALL THAT APPLY)

- RESTORED THROUGH ACCEPTANCE OF AN OBLITERATED EVIDENCE LOCATION
- RESTORED THROUGH ACCEPTANCE OF A FOUND PERPETUATED LOCATION
- CONSIDERED A LOST CORNER AND REESTABLISHED THROUGH LOST CORNER PROPORTIONATE METHODS (INCLUDE A PLAN VIEW DRAWING SHOWING DISTANCES AND DIRECTIONS TO OTHER PUBLIC LAND SURVEY CORNERS USED FOR PROPORTIONING AND DETERMINING THE CORNER LOCATION)
- RESTORED OR REESTABLISHED IN A LOCATION THAT DIFFERS FROM A PREVIOUS RESTORATION OR REESTABLISHMENT (INCLUDE A PLAN VIEW DRAWING AND INDICATE WHAT WAS SET AND/OR FOUND)
- CHECK IF THERE IS ADDITIONAL INFORMATION ON BACK

DESCRIBE THE MONUMENT AND ACCESSORIES USED TO PERPETUATE THE LOCATION OF THE CORNER. (INCLUDE A PLAN VIEW DRAWING AND INDICATE WHAT WAS SET AND/OR FOUND) ALSO INCLUDE FOUR TIES TO THE SECTION CORNER AND DESCRIPTION OF THE TIES.

FD 2" BRASS CAPPED MONUMENT NE COR



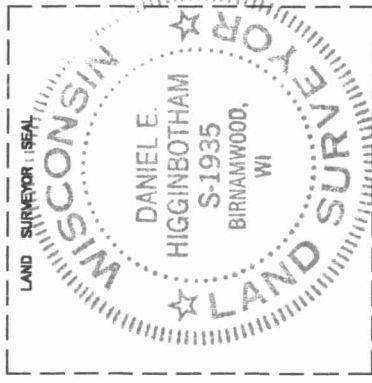
- SET MAG NAIL LOCATION
- SET 1"X30" IRON PIPES TIES

DANIEL E. HIGGINBOTHAM

(Type or print name) CERTIFY THAT THE CORNER LOCATION SHOWN ON THIS RECORD WAS DETERMINED BY ME OR UNDER MY DIRECTION AND CONTROL AND THAT THIS U.S. PUBLIC LAND SURVEY MONUMENT RECORD IS CORRECT AND COMPLETE TO THE BEST OF MY KNOWLEDGE AND BELIEF.

Dan Higginbotham
SIGNATURE

1/29/01
DATE



INDEX NO.

P25
31-10

311024 2000

