

CERTIFIED LAND CORNER RESTORATION

Index No. P-1

State of Wisconsin }  
County of Langlade } ss.

History of original corner establishment:

Re-divided complete Section 19, T31N, R11 E

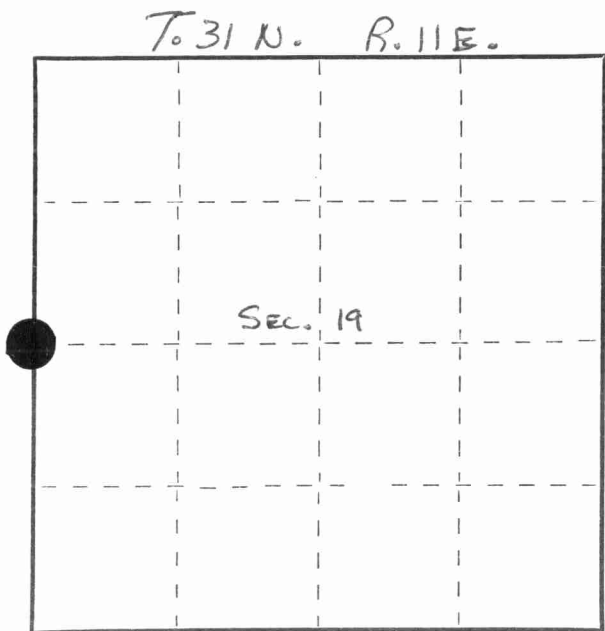
I Gary A. Radtke, do hereby certify that on the 13th. day of December, 1977, I found evidence of the W/4 corner of Section 19 Township 31 11E, North, Range 11E, Fourth Principal Meridian, as described hereon; and that from this evidence I established a new monument and accessories as described hereon to perpetuate the original location of this corner.

Resident witnesses:

Patrick Vander Leest

FORM 985 H. C. MILLER CO., MILWAUKEE

43110242000



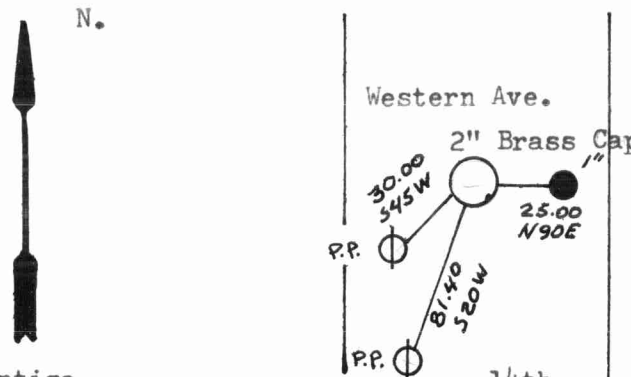
○ = Corner monument restored.

Description of corner evidence found:

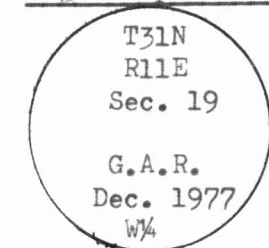
*Sub NW 1/4 3/10*



Description of monument and accessories I established to perpetuate the original location of this corner.



Brass Cap Marked



Dated at Antigo, Wis., this 14th. day of December, 1977.

Signature Gary A. Radtke Title Registered Land Surveyor Registration No. S-1248  
(County Surveyor, Registered Land Surveyor, or other duly authorized official)

Office of Register of Deeds, County of Langlade, I hereby certify that the within instrument was filed in this office for record on the \_\_\_\_\_ day of \_\_\_\_\_, 19\_\_\_\_ at \_\_\_\_\_ o'clock \_\_\_\_\_ M.

(Register of Deeds)

By \_\_\_\_\_ Deputy

