

U.S. PUBLIC LAND SURVEY MONUMENT RECORD

(Prepared and as required by S. A-E 7.08 WI Administrative Code)

THE SOUTHWEST CORNER OF SECTION 19, T. 31 N., R. 11 E., LANGLADE COUNTY, WISCONSIN.

CORNER WAS (CHECK ALL THAT APPLY):

- RESTORED THROUGH ACCEPTANCE OF AN OBLITERATED EVIDENCE LOCATION.
- RESTORED THROUGH ACCEPTANCE OF A FOUND PERPETUATED LOCATION.
- DETERMINED TO BE LOST AND RE-ESTABLISHED BY PROPORTIONATE METHODS.
(SHOW BEARINGS AND DISTANCES TO PLSS CORNERS USED FOR PROPORTIONING.)
- RESTORED/RECOVERED/REESTABLISHED IN A LOCATION THAT DIFFERS FROM A PREVIOUSLY ESTABLISHED POSITION.
(SHOW DIFFERENCE IN PLAN VIEW BELOW)
- CHECK HERE IF ADDITIONAL INFORMATION IS SHOWN ON THE REVERSE SIDE OF THIS FORM.

4311024000

DESCRIBE RECORD EVIDENCE, RECOVERED PHYSICAL EVIDENCE, OCCUPATIONAL EVIDENCE, TESTIMONIAL EVIDENCE AND ALL OTHER EVIDENCE THAT WAS CONSIDERED IN THE RESTORATION/RECOVERY/REESTABLISHMENT OF THE CORNER.

The original corner was established in 1860 by Hiram C. Fellows. Original BT's: white pine, 20", N 35° W, 13 lks., and a white pine, 20", S 40° E, 23 lks. In 1887 on the plat of Jones Addition of Outlots, Dorr didn't mention this corner, but did show the 1/16 corner and 1/4 corner east of here as both being stones. He shows the distance between those two stones as 1326.75'. I now measure 1328.31' between those corners. Based on the facts: that I know we don't have all of Dorr's records; that he did have stones at those other corners and would have needed this corner to set the intermediate 1/16 corner; that his distance works very good with current measurements, and that he did set many stones around the City of Antigo, I accept a stone found with chiseled "X" as the best evidence of the original corner location.

In 1974, former surveyor Kelly found a 2" iron pipe atop stone with "X" and made 4 power pole ties, but had no discussion of the history of the corner. He set new 2" iron pipe with stamped brass cap. 08/13/93 Dave Tlusty, Steve Fiskars found 2" iron pipe with brass cap but no remaining ties. 34" below the pipe found, we found the stone with chiseled "X" mentioned above.

06/30/94 Dave Tlusty set 1 1/4" x 30" iron pipe with 4" brass cap in new pavement directly over stone. 11/12/96 After utility construction around entire intersection, I added ties shown below.

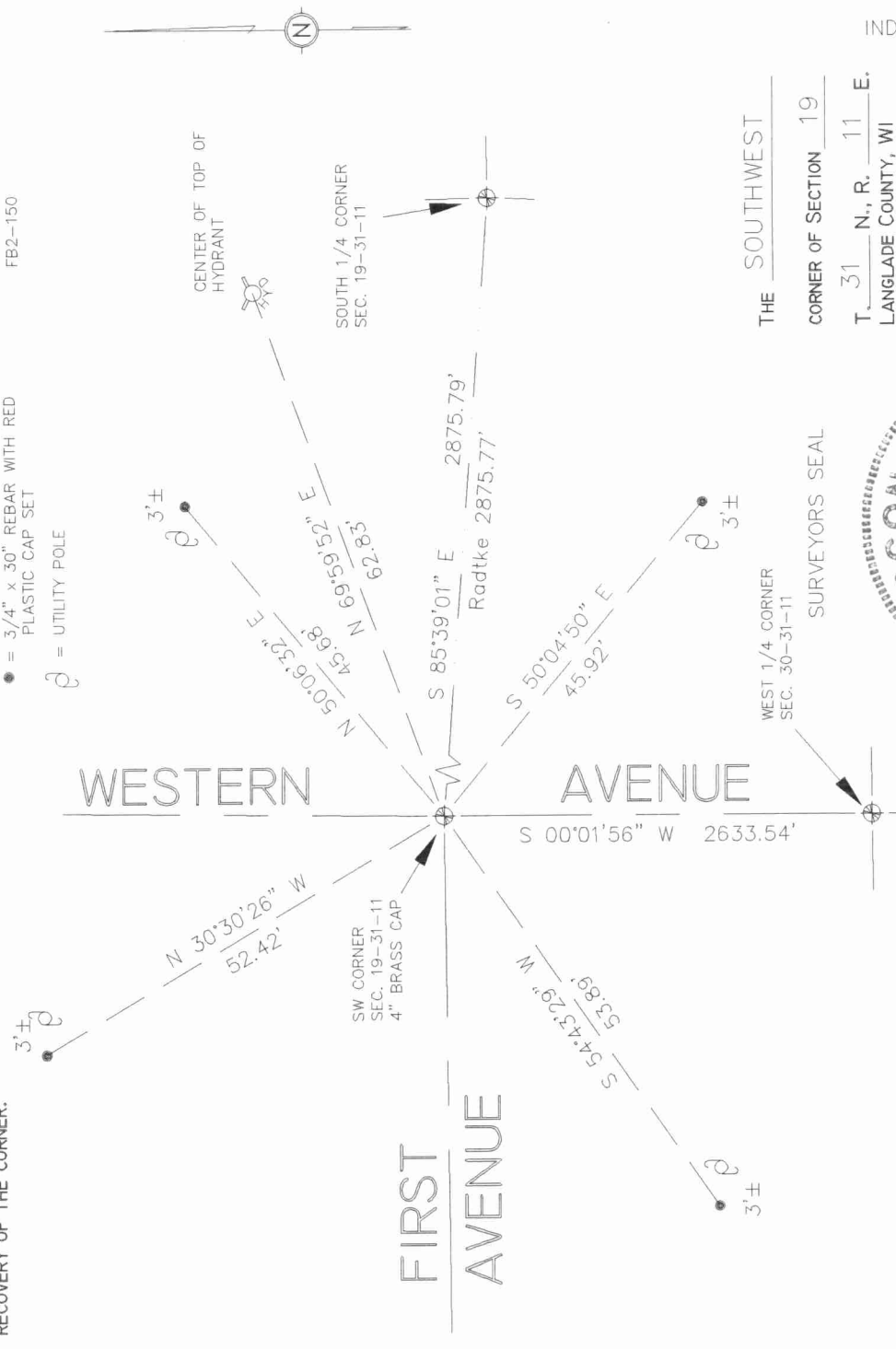
Corner is 4.4' WNW of center of manhole cover.

PHYSICAL DESCRIPTION OF THE MONUMENT SET:

Don't know if stone still remains after intersection construction. Current surface monument is 4" brass cap on 1 1/2" iron pipe.

DESCRIBE THE ACCESSORIES USED TO PERPETUATE THE LOCATION OF THE CORNER. INCLUDE A PLAN VIEW DRAWING AND INDICATE ACCESSORIES FOUND AND SET. DESCRIBE THE MEASURING POINT ON BEARING TREES. SHOW ANY TOPOGRAPHIC FEATURES THAT WOULD AID IN THE FUTURE RECOVERY OF THE CORNER.

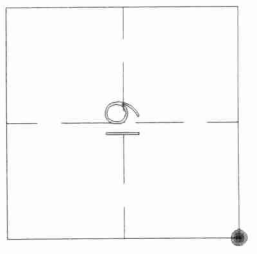
- = 3/4" x 30" REBAR WITH RED PLASTIC CAP SET
- ⊕ = UTILITY POLE



THE SOUTHWEST

CORNER OF SECTION 19

T. 31 N., R. 11 E.
LANGLADE COUNTY, WI



● = LOCATION OF CORNER

David E. Tlusty
I, Langlade County Surveyor, CERTIFY THAT THE
CORNER LOCATION SHOWN ON THIS RECORD WAS DETERMINED BY ME OR UNDER
MY DIRECTION AND CONTROL AND THAT THIS U.S. PUBLIC LAND SURVEY
MONUMENT RECORD IS CORRECT AND COMPLETE TO THE BEST OF MY KNOWLEDGE
AND BELIEF.

David E. Tlusty 12/17/96
SIGNATURE DATE

INDEX No. R-1

