

43110220000

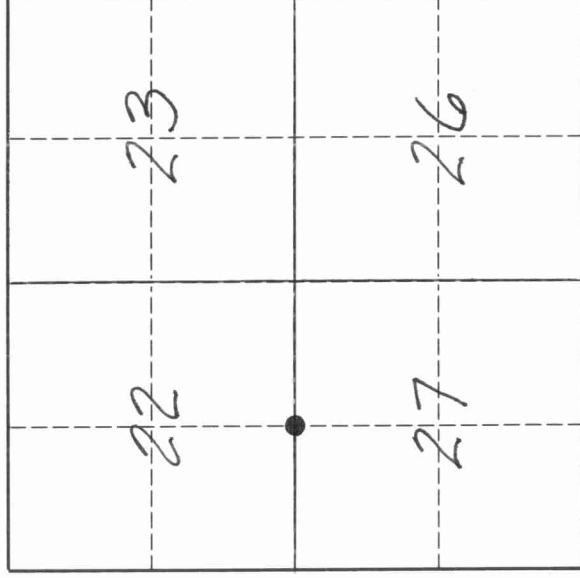
U. S. PUBLIC LAND SURVEY MONUMENT RECORD

INSTRUCTIONS:

This record shall show the location of the corner and shall include all of the following nine elements (a through i).

- (a) Identify the corner by reference to the U.S. public land survey system.
- = Corner monument restored.

The South Quarter Corner of Section 22, Township 31 North, Range 10 East, Langlade County, Wisconsin.

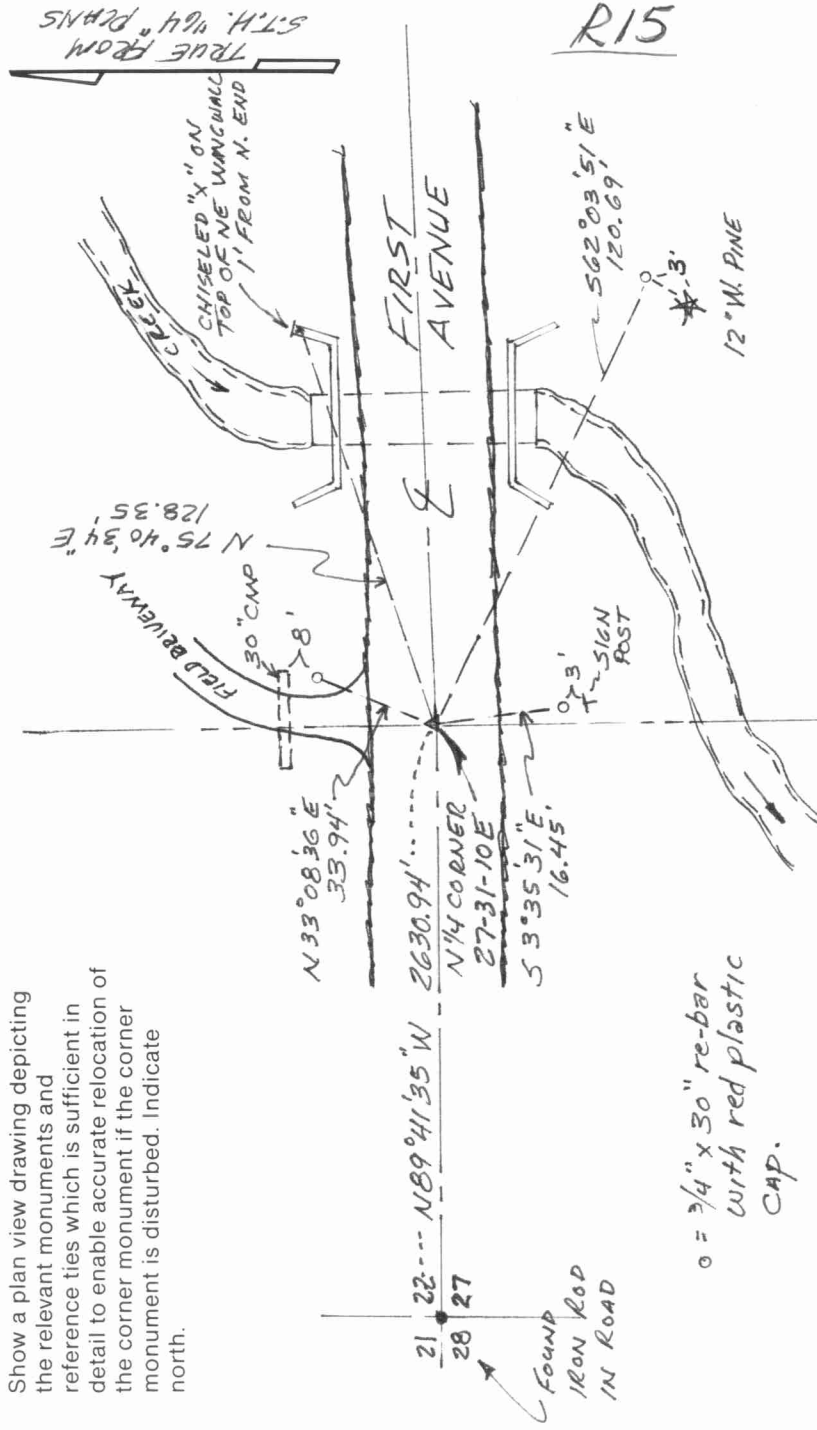


T. 31 N., R 10 E.

- (b) Describe any record evidence, monument evidence, occupational evidence, testimonial evidence or any other material evidence you considered, and whether the monument was found or placed.  
 The original corner was established 1860 by Hiram C. Fellows. In 1907, Ed Brooks measured from this corner to the section corner to the west. I established this corner at the intersection of a fence line from the south, with the East-West centerline of First Avenue. This location is in agreement with Brooks' distance the West, and also fits the "40" fence to the East as shown on the reverse side of this form. The fence to the South bends to the West at about 200-250' from the road. Set PK nail & washer for corner.

- (c) In the plan view drawing below, provide reference ties to at least 4 witness monuments, or, if the location is within a municipality, to at least 2 witness monuments. (Witness monuments shall be made of concrete, natural stone, iron or other equally durable material.)  
 Describe witness monuments.  
 FB5-77

- (d) Show a plan view drawing depicting the relevant monuments and reference ties which is sufficient in detail to enable accurate relocation of the corner monument if the corner monument is disturbed. Indicate north.



o = 3/4" x 30" re-bar with red plastic cap.

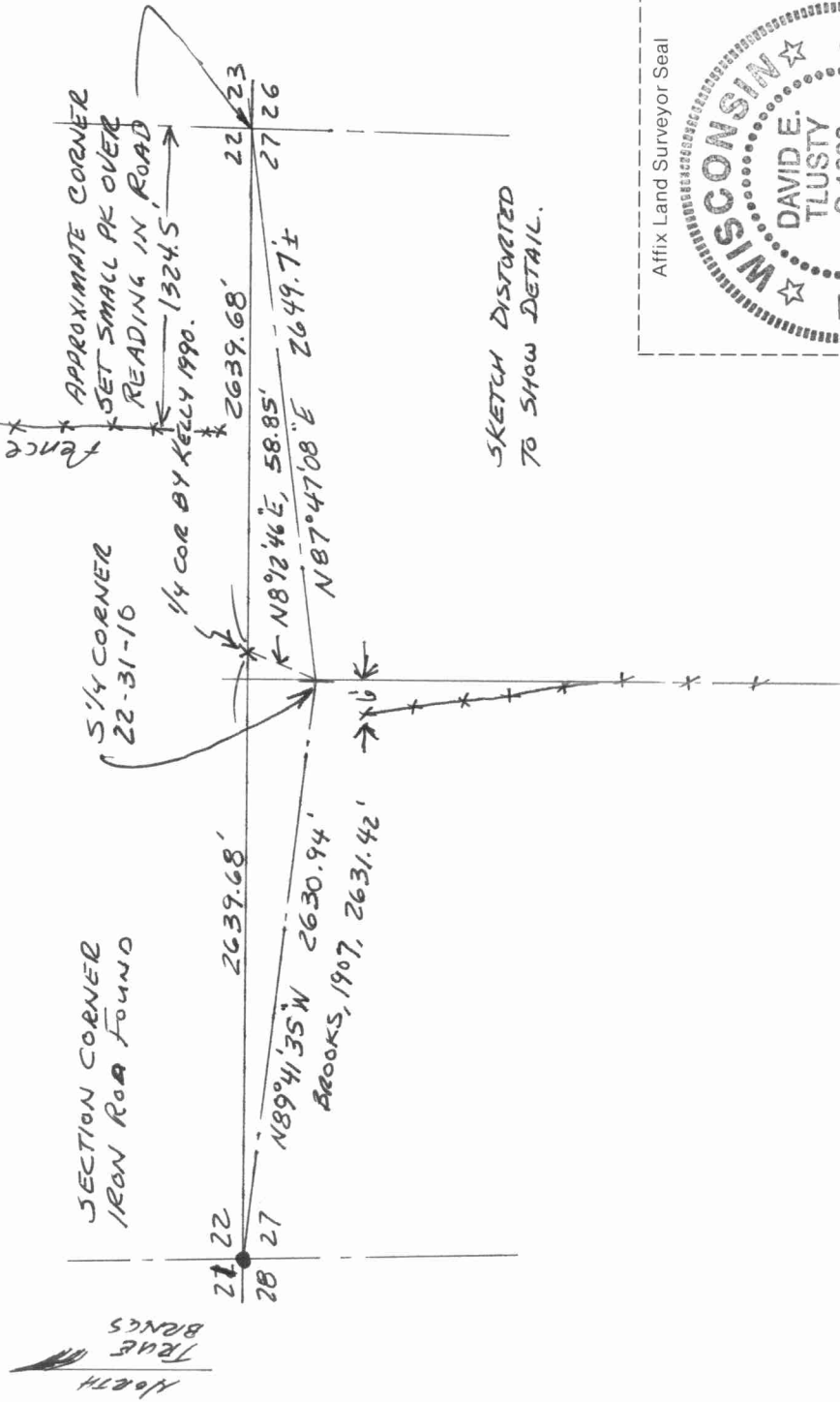
43110220000

Describe any material discrepancy between the location of the corner as restored or reestablished and the location of that corner as previously restored or reestablished by distance and direction. Show the discrepancy on the plan view drawing under (d), above. Show the distances between the corner as previously restored or reestablished and (1) the corner as restored or reestablished, and (2) to at least 2 of the witness monuments shown on the drawing in (d), above.

In 1990, former surveyor Kelly set this corner by single proportionate measurement between the Southwest corner and the Southeast corner of Section 22. See difference on sketch below.

- (f) Was the corner restored through acceptance of (1) an obliterated evidence location, or, (2) a found perpetuated location.?  
(1)

- (g & h) Was the corner reestablished through lost corner proportionate methods? If so, show the method, including the directions and distances to other public land survey corners used as evidence or used for proportioning in determining the corner location.



- (i) I, David E. Tlusty, Langlade County Surveyor  
(type or print name)  
certify that the corner location shown on this record was determined by me or under my direction and control and that this U.S. Public Land Survey Monument Record is correct and complete to the best of my knowledge and belief.

*David E. Tlusty*  
Signature

04/08/94  
Date