

LANGLADE COUNTY U.S. PUBLIC LAND SURVEY MONUMENT LOCATION RECORD

4311021 0020 2014

SECTION 28
TOWNSHIP 31 N
RANGE 10 E

R-11
NO.

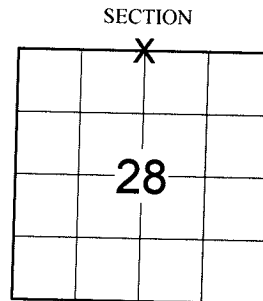
LANDMARK BENCHMARK _____

FOUND
SET
RESET
RE-TIED

CORNER IDENTITY: N1/4 CORNER SEC. 28 (BERNTSEN SNM-1 NAIL)

ACKLEY
CITY, VILLAGE, TOWN

LANGLADE COUNTY COORDINATE: N: 342891.258
E: 595122.652



ELEVATION-(FEET): _____ DATUM: _____

WEATHER: PARTLY SUNNY

DATE OF SURVEY: 8/7/2014 TEMPERATURE: 74 °F

SURVEY PARTY: CHRIS FIERI & IAN FIELD

BASIS FOR MONUMENT LOCATION:

(DESCRIBE METHOD OF SURVEY AND CORNER AUTHENTICATION)

7/27/1993 - Edwin Abendroth S-798 re-established the corner using single proportionate measurement and state highway records. Set a Railroad spike at the corner and set witness monuments to perpetuate the location. This corner fell 70.57 feet South of a found Railroad spike that was previously established as the corner by William Kelly.

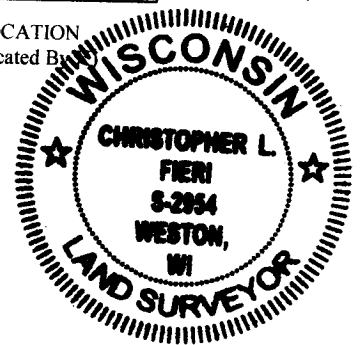
7/6/1995 - Thomas Amott S-887 set a Railroad spike at this corner as the previous corner monument and two (2) witness monuments had been destroyed by road construction. He set two (2) additional ties and filed a tie sheet.

8/7/2014 - I visited this corner prior to road construction and recovered the Railroad Spike of record marking the corner location. I found and measured to all four (4) existing witness monuments which checked well with the record distances. Set four (4) Berntsen witness monuments and returned after the re-surfacing of State Highway "64" to set a Berntsen SNM-1 Nail at the corner location.

FIELD BOOK NO. S-12 PAGE NO. 56

COMPANY RIVERSIDE LAND SURVEYING LLC

LOCATION
(Indicated By)



CERTIFIED CORRECT:

Christopher L. Fieri

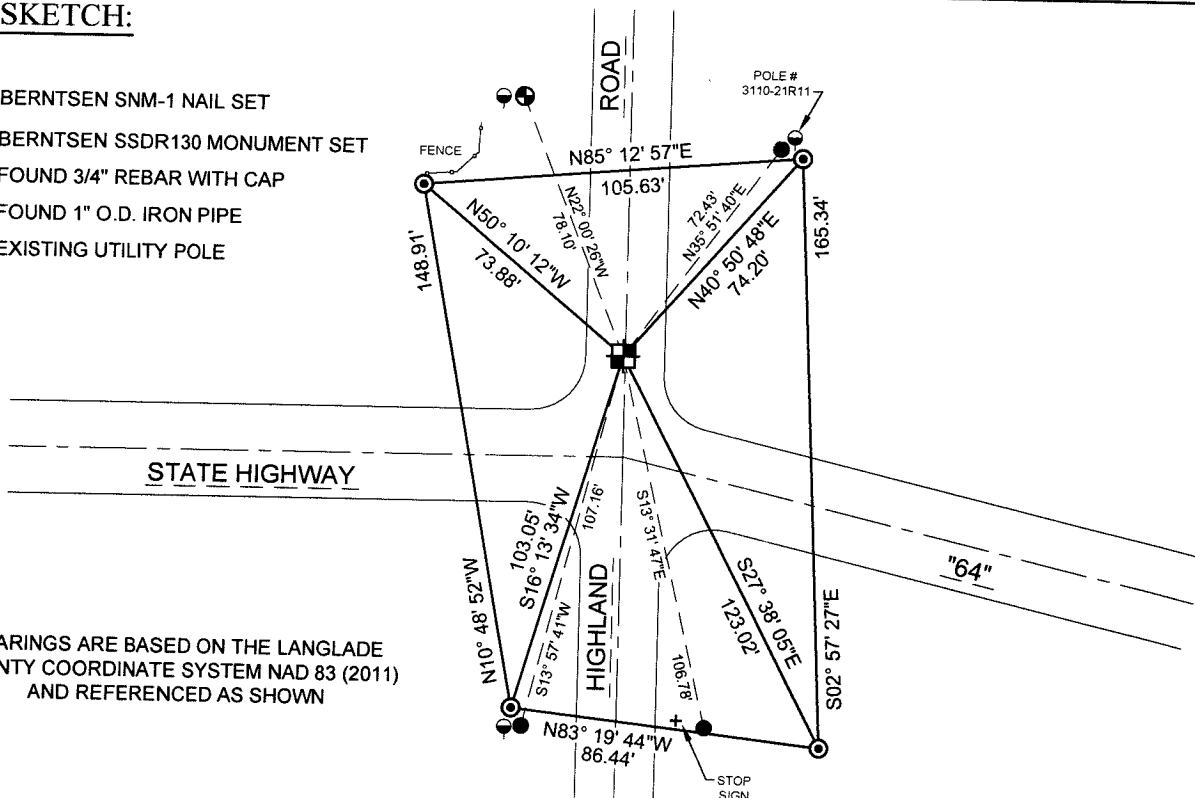
CHRISTOPHER L. FIERI S-2954

Registered Land Surveyor

DATE: 10-9-2014

TIE SKETCH:

- BERNTSEN SNM-1 NAIL SET
- BERNTSEN SSSDR130 MONUMENT SET
- FOUND 3/4" REBAR WITH CAP
- FOUND 1" O.D. IRON PIPE
- EXISTING UTILITY POLE



BEARINGS ARE BASED ON THE LANGLADE COUNTY COORDINATE SYSTEM NAD 83 (2011) AND REFERENCED AS SHOWN

R-11
NO.