

# U.S. PUBLIC LAND SURVEY MONUMENT RECORD

(Prepared and as required by S. A-E 7.08 WI Administrative Code)

THE NORTH 1/4 CORNER OF SECTION 29, T. 31 N., R. 10 E., LANGLADE COUNTY, WISCONSIN.

CORNER WAS (CHECK ALL THAT APPLY):

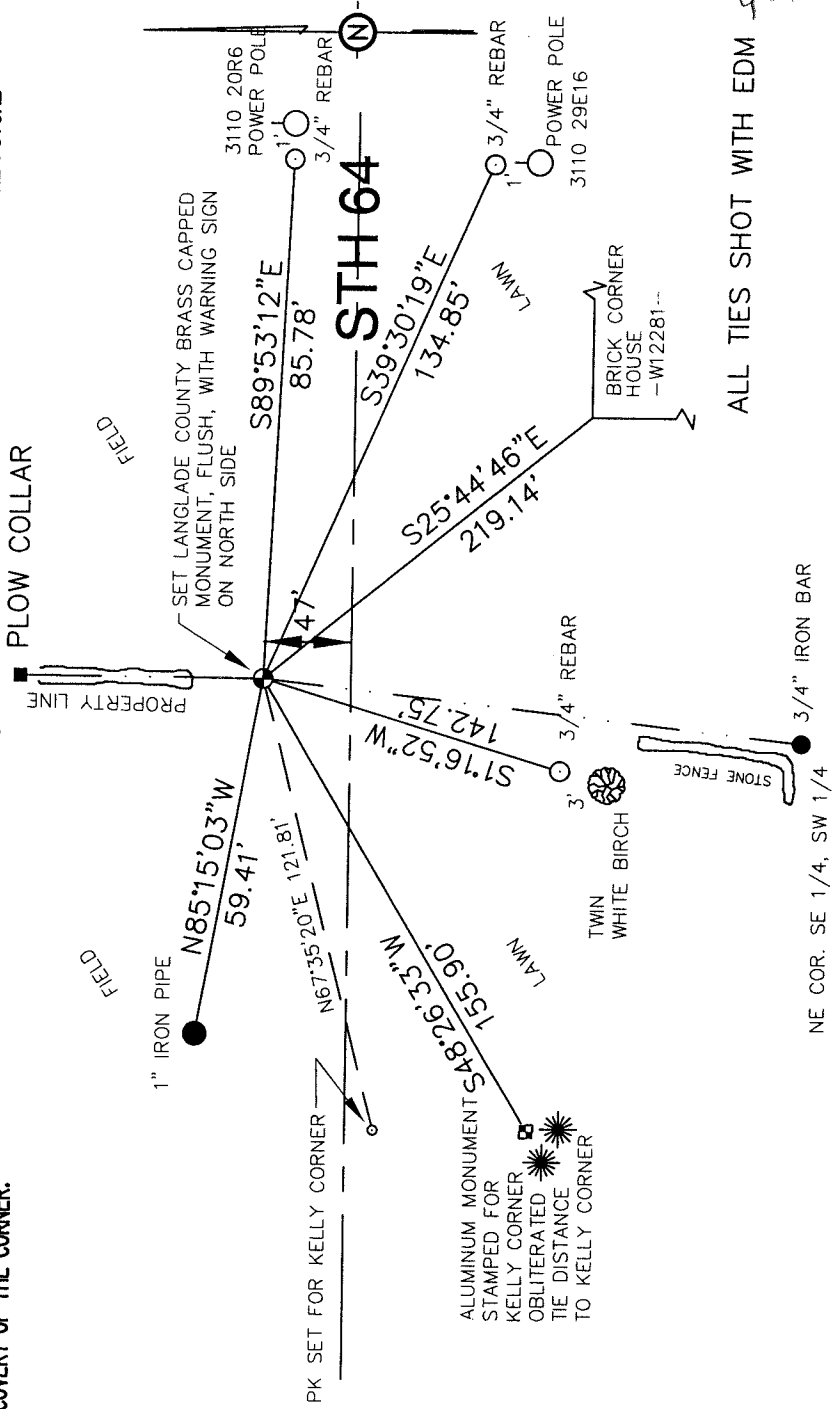
- RESTORED THROUGH ACCEPTANCE OF AN OBLITERATED EVIDENCE LOCATION.
- RESTORED THROUGH ACCEPTANCE OF A FOUND PERPETUATED LOCATION.
- DETERMINED TO BE LOST AND RE-ESTABLISHED BY PROPORTIONATE METHODS.  
(SHOW BEARINGS AND DISTANCES TO PLSS CORNERS USED FOR PROPORTIONING.)
- RESTORED/RECOVERED/REESTABLISHED IN A LOCATION THAT DIFFERS FROM A PREVIOUSLY ESTABLISHED POSITION.  
(SHOW DIFFERENCE IN PLAN VIEW BELOW)
- CHECK HERE IF ADDITIONAL INFORMATION IS SHOWN ON THE REVERSE SIDE OF THIS FORM.

DESCRIBE RECORD EVIDENCE, RECOVERED PHYSICAL EVIDENCE, OCCUPATIONAL EVIDENCE, TESTIMONIAL EVIDENCE AND ALL OTHER EVIDENCE THAT WAS CONSIDERED IN THE RESTORATION/RECOVERY/REESTABLISHMENT OF THE CORNER.  
CORNER ORIGINALLY SET BY H.C. FELLOWS AUGUST, 1860 SET POST, FIR 6 N44W 3 LINKS HEMLOCK 6 S75E 18 LINKS. 11-5-90, KELLY FOUND IRON, 1.4' SOUTH OF CENTER LINE STH 64. I COULD NOT FIND IRON, BUT FOUND WITNESS MONUMENTS. HIS CORNER DID NOT AGREE WITH LINES TO THE SOUTH OR NORTH. FOUND "PLOW COLLAR" AT CENTER OF SECTION 20-31-10 (FROM "MISC. NOTES, VARIOUS SURVEYORS 31-10, SEC. 20, PG 2 OF 2) LOOKED FOR 2" IRON PIPE SET FOR NE CORNER, SE 1/4, SW 1/4, DID NOT FIND. FOUND 1-1/4" IRON PIPE WITH PVC INSERT. DID NOT HOLD. HELD NARROW UNPLOWED STRIP GOING SOUTH FROM CENTER OF SECTION FOR BEARING. HELD 3/4" IRON BAR AT NE CORNER OF SE 1/4, SW 1/4 SECTION 29, AND OLD STONE FENCE GOING NORTH FROM SAID CORNER FOR LINE. USED HWY 64 ROAD PLANS (64) THAT SAID SECTION CORNER WAS 47 FEET NORTH OF CENTER LINE. HELD DISTANCE NORTH OF CENTER LINE, ALONG WITH TWO BEARINGS, FROM NORTH AND SOUTH, RESET CORNER. CORNER FIT VERY WELL FOR SECTION 29.

PHYSICAL DESCRIPTION OF THE MONUMENT SET:

SET A 2" x 30" BRASS CAPPED MONUMENT FOR CORNER.  
SEE BACK OF TIE SHEET FOR DRAWING OF MONUMENT AND SECTION SUMMARY.

DESCRIBE THE ACCESSORIES USED TO PERPETUATE THE LOCATION OF THE CORNER. INCLUDE A PLAN VIEW DRAWING AND INDICATE ACCESSORIES FOUND AND SET. DESCRIBE THE MEASURING POINT ON BEARING TREES. SHOW ANY TOPOGRAPHIC FEATURES THAT WOULD AID IN THE FUTURE RECOVERY OF THE CORNER.



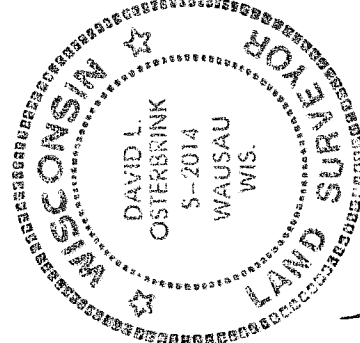
ALL TIES SHOT WITH EDM 3110200020

THE NORTH 1/4 CORNER OF SECTION 29

T. 31 N., R. 10 E. LANGLADE COUNTY, WI

SURVEYORS SEAL

Bearings - referenced to section lines shown on reverse side.

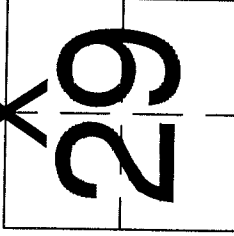


I, David L. Osterbrink identify that the corner location shown on this record was determined by me or under my direction and control and that this U.S. Public Land Survey Monument Record is correct and complete to the best of my knowledge and belief.

David L. Osterbrink  
SIGNATURE

11-23-98

DATE

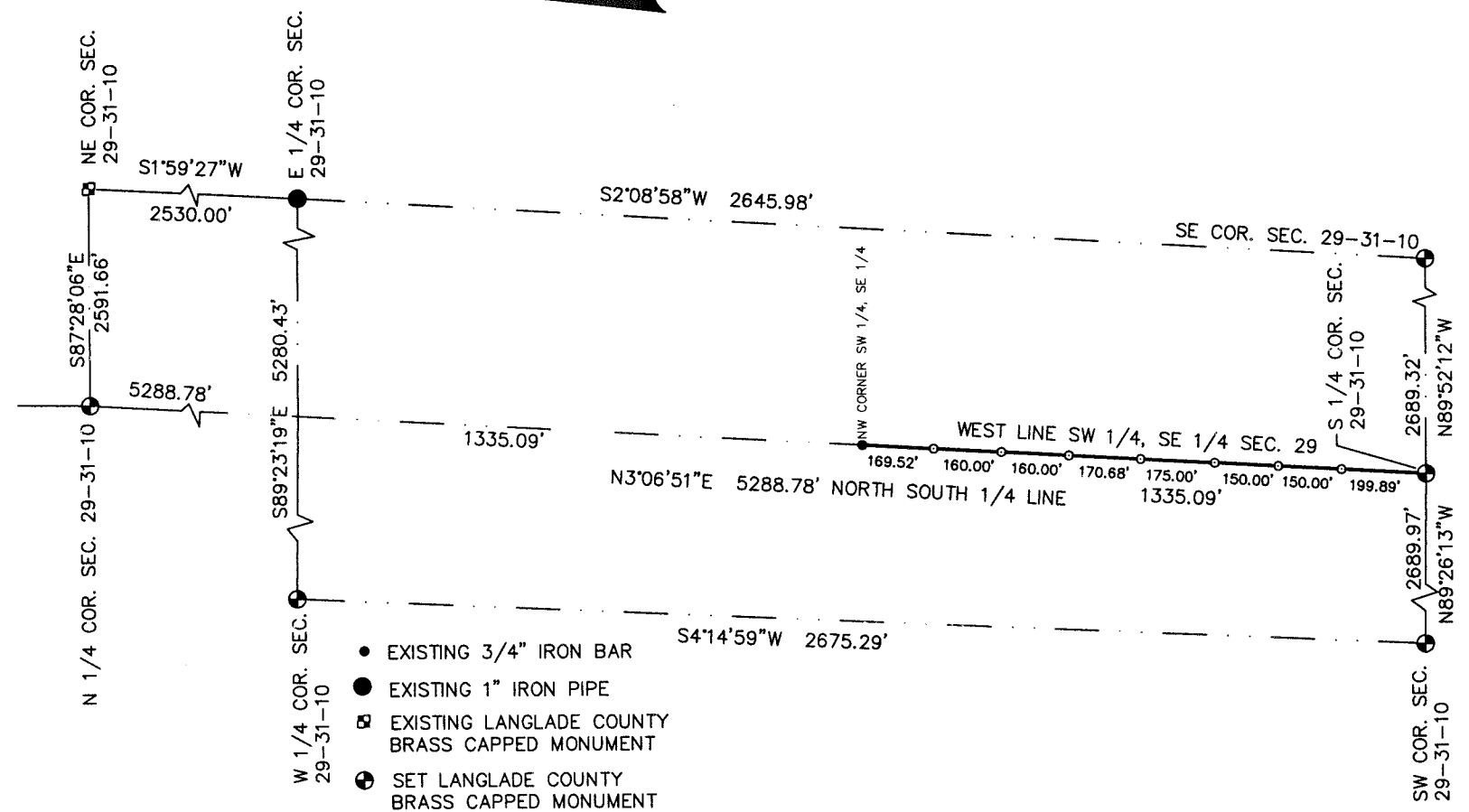
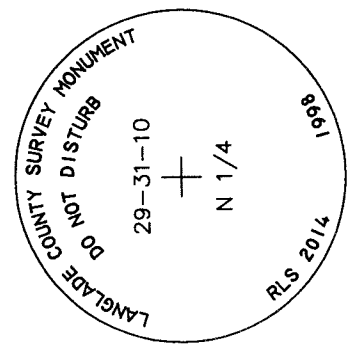
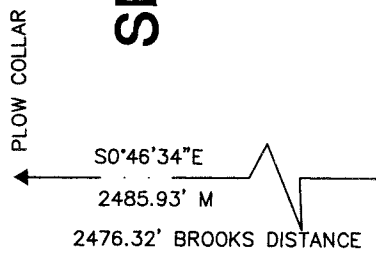


O = LOCATION OF CORNER

INDEX No. R7

4311020000

# SECTION SUMMARY 29-31-10



- EXISTING 3/4" IRON BAR
- EXISTING 1" IRON PIPE
- ⊠ EXISTING LANGLADE COUNTY BRASS CAPPED MONUMENT
- ⊕ SET LANGLADE COUNTY BRASS CAPPED MONUMENT
- SET 1-1/4" x 24" IRON PIPE WEIGHING 2.27 LBS./LIN. FT.