

LANGLADE COUNTY U.S. PUBLIC LAND CORNER RESTORATION

The East Quarter corner of Section 19, T. 31 N., R. 10 E., Langlade County, WI.

Corner was: (check all that apply)

- Restored through acceptance of an obliterated evidence location.
- Restored through acceptance of a found perpetuated location.
- Determined to be lost and re-established through proportionate methods.
- Show bearings and distances to PLSS corners used for proportioning, and show original distances.
- Restored/recovered/re-established in a location that differs from a previously established position.
- (Show difference in plan view below).
- Check here if additional information is shown on the reverse side of this form.

4311019 2000

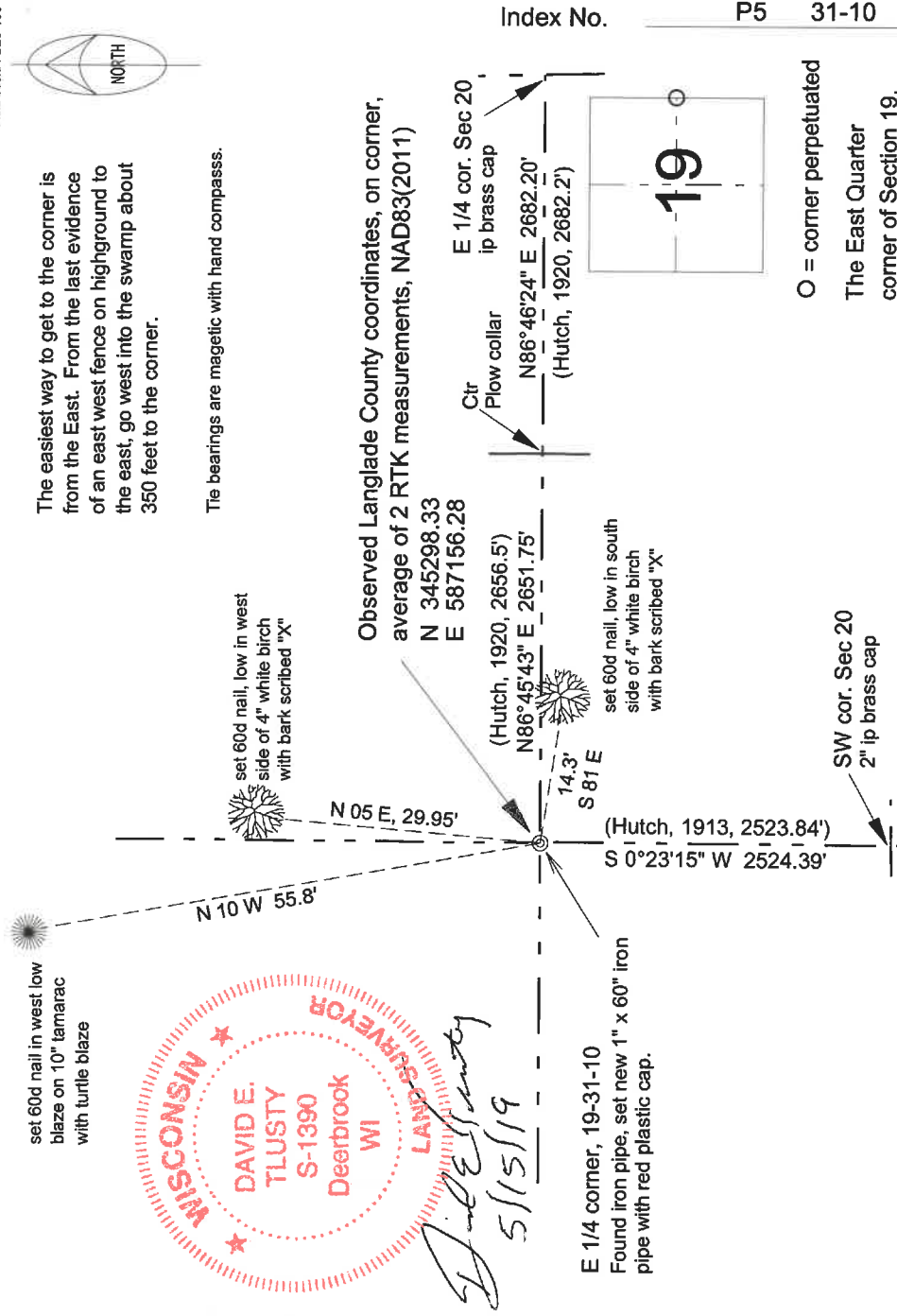
Describe record evidence, recovered physical evidence, occupational evidence, testimonial evidence and all other evidence considered in the recovery/restoration of the corner.

The original corner was established in 1860 by Hiram C. Fellows. Original bearing trees: birch, 9", N60W, 12 links and a birch, 6", S32E, 10 links. In Dec. 1908, E.S. Brooks measured E-W quarter line in Section 20 as 81.07 ch (5360.5') and described this corner as "orig BT's down and burned". He set a center at 2677.6 from this corner. In May, 1913, Hutchinson used this corner for proportioning to set the SW corner of section 20, but didn't describe this corner. In 1920, Hutchinson used this corner for proportioning to set the SW corner of section 20, but again, didn't describe this corner. He is known to use pipe and mentioned several set at corners within Section 20. He measured E-W quarter line in Section 20 as 5340.1 ft and said this corner is 2656.5 ft west of the center. On May 13, 2019, D. Tlusty and Luke Williams searched at Hutchinsons distance from the center of section. A few feet east of our search location, we found a 10" portion of 1" pipe, obviously rusted off and tipped over in the swamp. Below that in the same location we found a 14" piece of pipe, very badly rusted. As Hutchinson is known to use pipe, I accept this pipe as the best evidence of his perpetuation of the original corner. To preserve this location, I set the monument and references shown below.

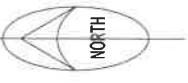
Physical description of the monument set:

In place of the pipe remains found, I set a 1" (ID) x 60" long iron pipe, topped with a red plastic plug which is 2 inches above the water level in the swamp. I marked bearing trees shown and described below and set a 6' steel channel post, 4' in the ground, 1' south of the corner. I laid existing pipe found next to the new pipe set. Corner is in alder swamp.

Describe the accessories used to perpetuate the corner. Include a plan view drawing and accessories found/set. Describe measuring point on bearing trees. Show any topographic features that would aid in future recovery of the corner.



Field book: FB20-100

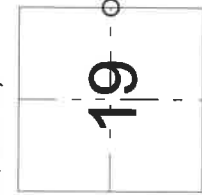


The easiest way to get to the corner is from the East. From the last evidence of an east west fence on highground to the east, go west into the swamp about 350 feet to the corner.

The bearings are magnetic with hand compass.



Index No. P5 31-10



O = corner perpetuated
The East Quarter corner of Section 19, T. 31 N., R. 10 E., Langlade County, WI

I, David E. Tlusty, Registered Land Surveyor, as Langlade County Surveyor, certify that the corner location on this record was determined by me and that this U.S. Public Land Survey Monument Record is correct to the best of my knowledge and belief.