



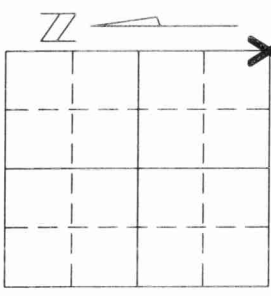
Stock No. 26273

U.S. PUBLIC LAND SURVEY MONUMENT RECORD

Note: This form is intended and designed to fulfill all requirements of Wisconsin Administrative Code, Chapter A-E 5.02, U.S. Public Land Survey Monument Record (3)(a)(b)(c)(d)(e)(f)(g)(h)(i). An additional sheet may be added if necessary to conform with said requirements.

(a) Corner location: Township 31 North

43110190000



Section 19

Range 10 East

Town/City/Village ACKLEY

County LANGLADE

(b)(f)(g)(h) Description of monument found at this corner and if it was accepted, state all evidence (material, testimonial, occupational, plats, records, other monuments) used as a basis for accepting. If not accepted or if nothing was found, state evidence used as basis for establishing location. If reestablished through lost corner proportionate methods, indicate all monuments, distances and directions used to establish.

AUGUST, 1860-TOWNSHIP SUBDIVIDED BY HIRAM FELLOWS, DEPUTY SURVEYOR. THE SOUTH LINE OF THE SOUTHWEST 1/4 OF SECTION 20 WAS MEASURED AT 42.06 CH.

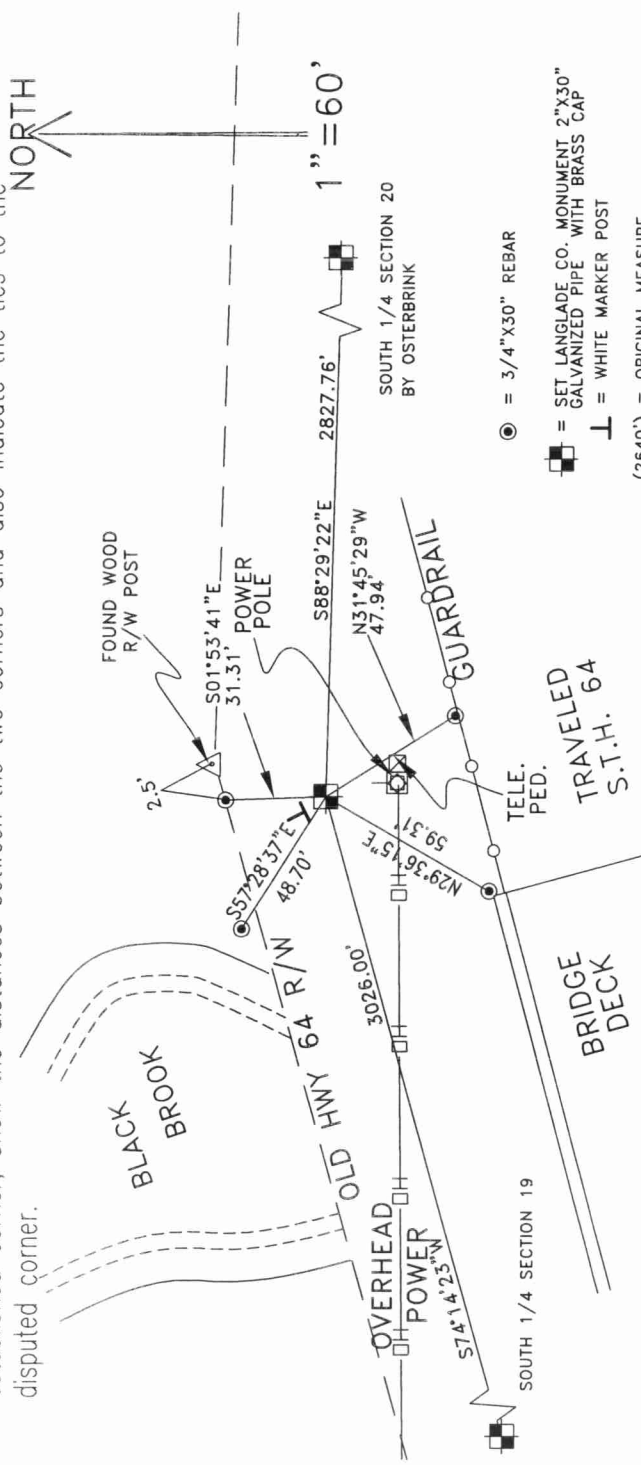
1913-COUNTY SURVEYOR HUTCHINSON RESURVEYED THIS CORNER. HE FOUND TWO ORIGINAL BEARING TREES WITH MARKS, ONE WAS DEAD, ONE WAS DOWN. HUTCHINSON SET A WELL POINT AT THE CORNER AND TIED THE SPOT OUT WITH NEW BEARING TREES.

SEVERAL OTHER SURVEYS BY COUNTY SURVEYORS SUBSEQUENTLY REFERENCED THIS CORNER.

1999-DAVID OSTERBRINK, R.L.S. REESTABLISHED THE SOUTH 1/4 CORNER OF SECTION 20.

WE SEARCHED IN AN AREA DETERMINED BY THE DISTANCE FROM THE CORNER SET BY OSTERBRINK AS MEASURED BY THESE COUNTY SURVEYORS AND THE INTERSECTION OF A LINE DOWN THE MIDDLE OF AN OLD ROAD BED. THIS ROADBED WAS REPORTED TO BE ON THE SECTION LINE RUNNING WEST OUT OF THIS CORNER BY SEVERAL OLD ROAD SURVEYS. WE FOUND NO EVIDENCE OF THE ORIGINAL CORNER OR ITS ACCESSORIES, OR HUTCHINSON'S WELL POINT OR BEARING TREES. WE DID FIND AN OLD WOODEN RIGHT-OF-WAY POST WITH YELLOW PAINT, ROTTEN ABOVE GROUND, BUT SOLID UNDERNEATH, 33 FT. NORTH OF OUR SEARCH AREA. WHEN I RAN A LINE FROM OSTERBRINK'S CORNER TO A POINT 33 FT. DIRECTLY SOUTH OF THE POST, WE MATCHED THE DISTANCE ALONG THE SOUTH LINE OF THE SOUTHWEST 1/4 OF SECTION 20 WITHIN 0.2' AS MEASURED BY HUTCHINSON IN 1913 (2825.5 FT). THIS DISTANCE WAS 49 FEET SHORT OF THE ORIGINAL MEASURE. I ACCEPTED THIS SPOT AND ITS RELATION TO OSTERBRINK'S CORNER AND TO THE RIGHT-OF-WAY POST AS BEING THE BEST AVAILABLE EVIDENCE OF THE CORNER'S ORIGINAL LOCATION.

(c)(d)(e) Plan view of corner with ties to at least 4 witness monuments. If in disagreement with previously established corner, show the distances between the two corners and also indicate the ties to the disputed corner.



○ = 3/4"X30" REBAR

■ = SET LANGLADE CO. MONUMENT 2"X30" GALVANIZED PIPE WITH BRASS CAP
 ⊥ = WHITE MARKER POST

(2540') = ORIGINAL MEASURE

-ALL WITNESS TREES MARKED WITH BLUE PAINT AND SIGN-

(i) I, DAVID A. RENAUD

(type or print name) certify that the corner location on this record was determined by me or under my direction and control and that this U.S. Public Land Survey Monument Record is correct and complete to the best of my knowledge and belief.

David A. Renaud Sept. 22, 2000

Signature

Date



R5 31-10

