

LANGLADE COUNTY U.S. PUBLIC LAND CORNER RESTORATION

The East Quarter corner of Section 18, T. 31 N., R. 10 E., Langlade County, WI.

43110182000

Corner was: (check all that apply)

- Restored through acceptance of an obliterated evidence location.
- Restored through acceptance of a found perpetuated location.
- Determined to be lost and re-established through proportionate methods.
- Show bearings and distances to PLSS corners used for proportioning, and show original distances).
- Restored/recovered/re-established in a location that differs from a previously established position.
- (Show difference in plan view below).
- Check here if additional information is shown on the reverse side of this form.

Describe record evidence, recovered physical evidence, occupational evidence, testimonial evidence and all other evidence considered in the recovery/restoration of the corner.

The original corner was established in 1860 by Hiram C. Fellows. Original bearing trees: birch, 8", N59°E, 15 links, and a birch, 8", N17°W, 11 lks. In the 1920's, Hutchinson described the corner as "Old stake in rd. Set piece of cast iron for corner". In 1988, former surveyor Kelly "located broken cast iron stove parts and iron bar called for in Hutchisons notes. Set 3/4" IP over stove parts 4" below road surface.
06/09/2000 Dave Tlusty, Jim Lyon did not find 3/4" pipe called for by Kelly, but did find about 4 pieces of cast iron. Based on Hutchinsons previous mention of the cast iron, I accept it as the best evidence of the original corner location.

Physical description of the monument set:

I removed the existing cast iron and replaced it with a new 2" x 30" galvanized iron pipe with 3 1/4" base cap, top of which is 0.4' below the gravel road surface. I set three of the pieces of cast iron around the new monument.

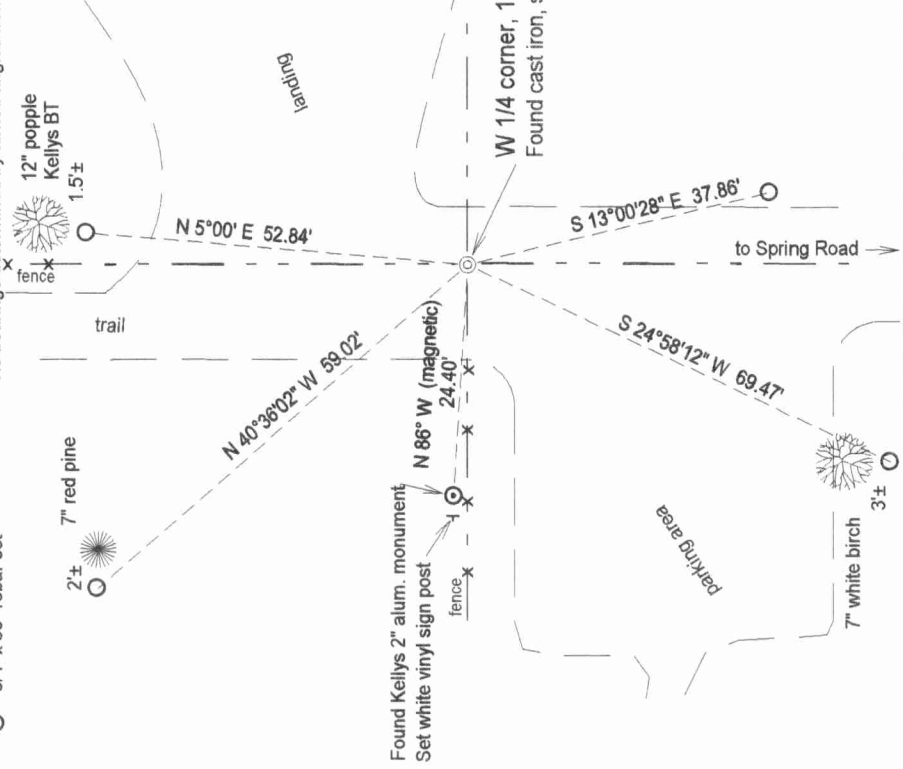
Describe the accessories used to perpetuate the corner. Include a plan view drawing and accessories found/set. Describe measuring point on bearing trees. Show any topographic features that would aid in future recovery of the corner.

LEGEND

○ 3/4" x 30" rebar set

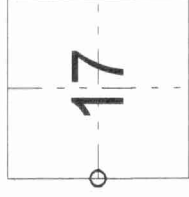
○ Tie bearings determined by turned angles from magnetic reference to NE witness monument.

Field book: FB17-70



Index No. _____

L5 31-10



○ = corner perpetuated

The West Quarter
corner of Section 17,
T. 31 N., R. 10 E.,
Langlade County, WI

I, David E. Tlusty, Registered Land Surveyor, as Langlade County Surveyor, certify that the corner location on this record was determined by me and that this U.S. Public Land Survey Monument Record is correct to the best of my knowledge and belief.