

# LANGLADE COUNTY U.S. PUBLIC LAND CORNER RESTORATION

The South Quarter corner of Section 17, T. 31 N., R. 10 E., Langlade County, WI.

**Corner was: (check all that apply)**

- Restored through acceptance of an obliterated evidence location.
- Restored through acceptance of a found perpetuated location.
- Determined to be lost and re-established through proportionate methods.
  - Show bearings and distances to PLSS corners used for proportioning, and show original distances).
  - Restored/recovered/re-established in a location that differs from a previously established position.
  - (Show difference in plan view below).
- Check here if additional information is shown on the reverse side of this form.

4311017 0020

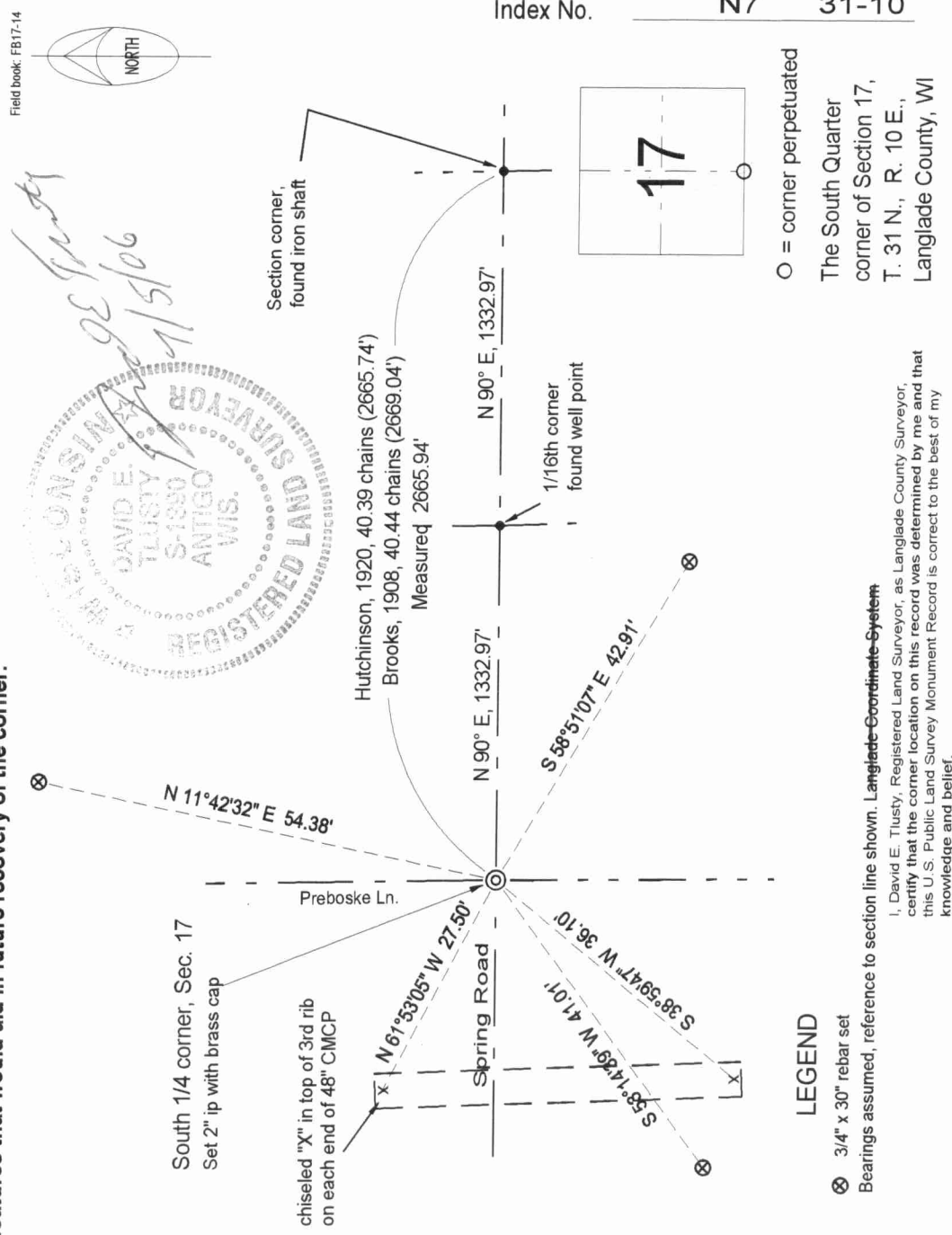
**Describe record evidence, recovered physical evidence, occupational evidence, testimonial evidence and all other evidence considered in the recovery/restoration of the corner.**

The original corner was established in 1860 by Hiram Fellows. Original bearing trees: tamarac, 8", S53°W, 21 links and a tamarac, 11", N9°E, 25 links. In 1908, Brooks measured east from this corner which he described as "post". In 1920, Hutchinson described this corner as "1/4 post by Baker". In 1999, I re-established this corner by extending a line from the recovered section corner and sixteenth corner as shown on the sketch below. I also noted Brooks and Hutchinsons distances and my distance agrees very well with Hutchinsons.

**Physical description of the monument set:**

I set a new 2" x 30" galvanized iron pipe with 3 1/4" brass cap in the road.

**Describe the accessories used to perpetuate the corner. Include a plan view drawing and accessories found/set. Describe measuring point on bearing trees. Show any topographic features that would aid in future recovery of the corner.**



Index No.           N7                     31-10          

○ = corner perpetuated  
The South Quarter corner of Section 17, T. 31 N., R. 10 E., Langlade County, WI

**LEGEND**  
⊗ 3/4" x 30" rebar set  
Bearings assumed, reference to section line shown. Langlade-Coordinate-System

I, David E. Tlusty, Registered Land Surveyor, as Langlade County Surveyor, certify that the corner location on this record was determined by me and that this U.S. Public Land Survey Monument Record is correct to the best of my knowledge and belief.