

LANGLADE COUNTY U.S. PUBLIC LAND CORNER RESTORATION

The Southeast corner of Section 17, T. 31 N., R. 10 E., Langlade County, WI.

Corner was: (check all that apply)

- Restored through acceptance of an obliterated evidence location.
- Restored through acceptance of a found perpetuated location.
- Determined to be lost and re-established through proportionate methods.
- Show bearings and distances to PLSS corners used for proportioning, and show original distances).
- Restored/recovered/re-established in a location that differs from a previously established position.
- (Show difference in plan view below).
- Check here if addition information is shown on the reverse side of this form.

4311017 0000

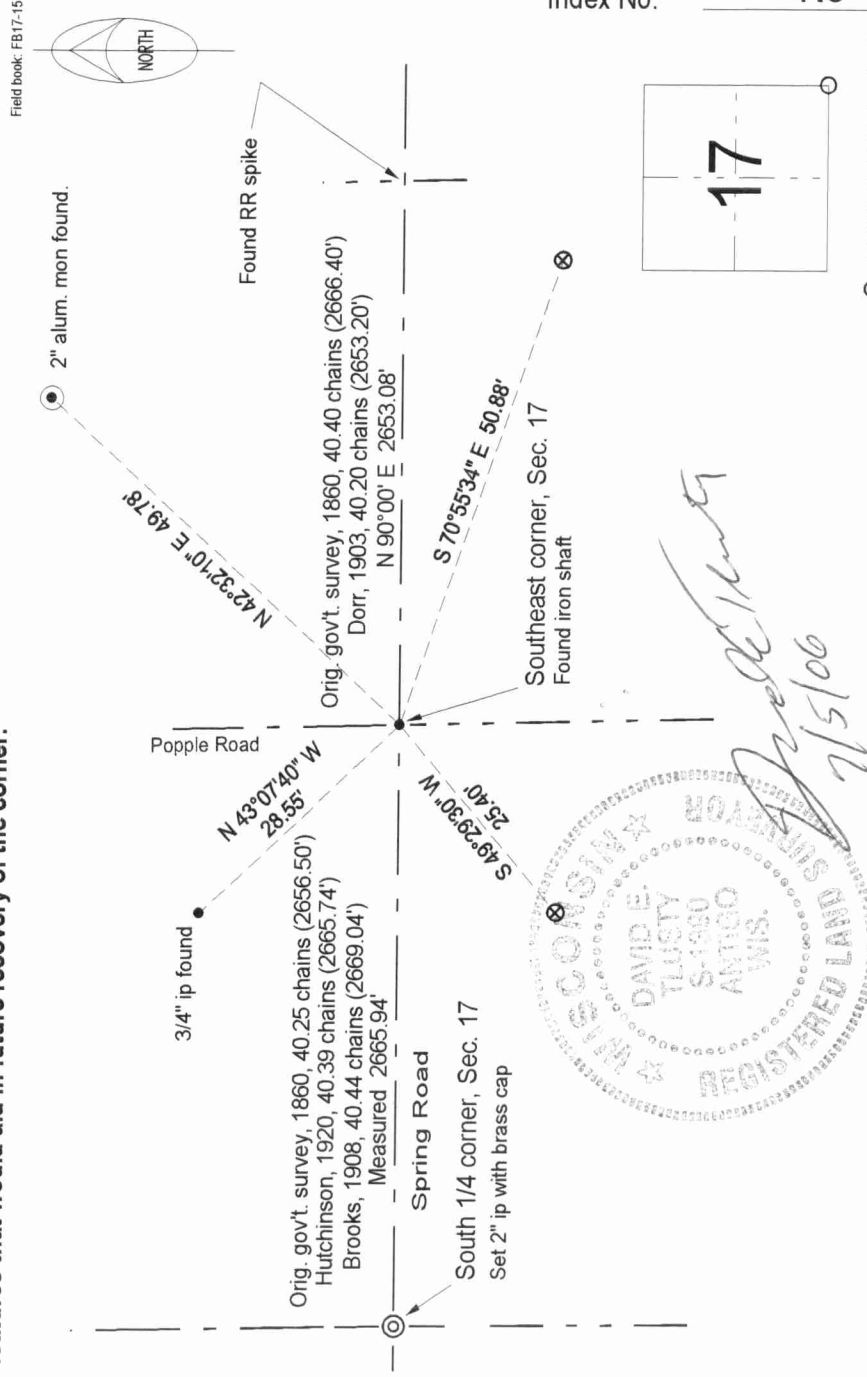
Describe record evidence, recovered physical evidence, occupational evidence, testimonial evidence and all other evidence considered in the recovery/restoration of the corner.

The original corner was established in 1860 by Hiram Fellows. Original bearing trees: hemlock, 12", S52°E, 11 links and a sugar, 10", N25°E, 30 links. In 1904, Dorr measured east from this corner, 40.20 ch. to 1/4 corner. In 1908, Brooks measured to this corner from the west, he measured 40.44 chains. In 1920, Hutchinson measured to this corner from the west, he measured 40.39 chains (2665.74') and described this corner as a stone. In 1988, former surveyor Kelly "located 1" iron bar below road surface. Set RR spike over bar". In 1999, I accepted the location of the 1" iron bar found. The iron bar found was leaning heavily NW. Kelly used the top of the iron bar. I dug deep to find the bottom point of the bar and set a 2" x 30" iron pipe with brass cap at that spot, which is 1.6' SE of Kellys "corner".

Physical description of the monument set:

I set a new 2" x 30" galvanized iron pipe with 3 1/4" brass cap in the road.

Describe the accessories used to perpetuate the corner. Include a plan view drawing and accessories found/set. Describe measuring point on bearing trees. Show any topographic features that would aid in future recovery of the corner.



LEGEND

⊗ 3/4" x 30" rebar set

Bearings assumed, reference to section line shown. ~~Langlade Coordinate System~~

I, David E. Tlusty, Registered Land Surveyor, as Langlade County Surveyor, certify that the corner location on this record was determined by me and that this U.S. Public Land Survey Monument Record is correct to the best of my knowledge and belief.

○ = corner perpetuated

The Southeast corner of Section 17, T. 31 N., R. 10 E., Langlade County, WI

Index No. N9 31-10