

LANGLADE COUNTY U.S. PUBLIC LAND CORNER RESTORATION

The Southeast corner of Section 16, T. 31 N., R. 09 E., Langlade County, WI.

Corner was: (check all that apply)

4311016 0000
431016 0000

- Restored through acceptance of an obliterated evidence location.
- Restored through acceptance of a found perpetuated location.
- Determined to be lost and re-established through proportionate methods.
- Show bearings and distances to PLSS corners used for proportioning, and show original distances).
- Restored/recovered/re-established in a location that differs from a previously established position.
- (Show difference in plan view below).
- Check here if additional information is shown on the reverse side of this form.

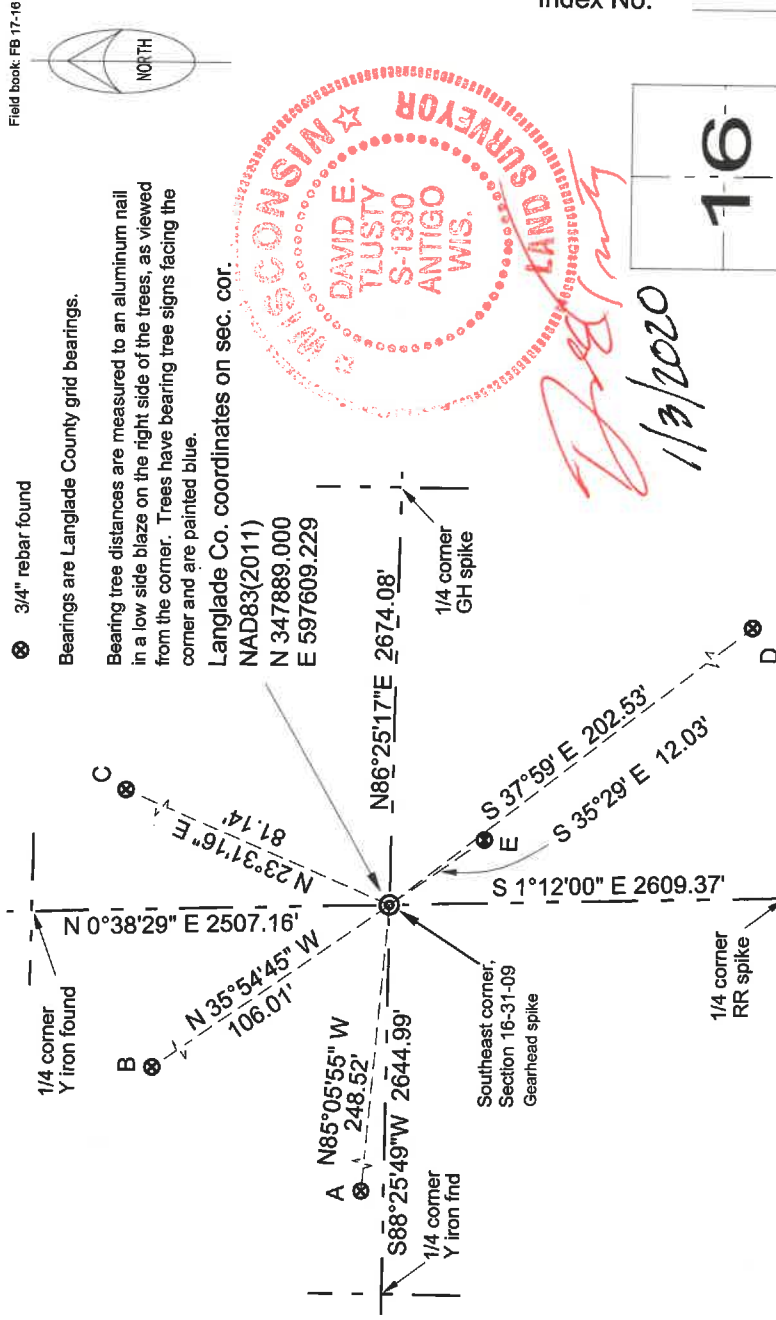
Describe record evidence, recovered physical evidence, occupational evidence, testimonial evidence and all other evidence considered in the recovery/restoration of the corner.

All the original history for this corner is shown on my original tie sheet dated 06/08/1995; work on that sheet was done before the bridge was replaced. On 06/10/99 I reset the corner from ties and from previously measured section line distances. Set a gearheaded spike for the corner and remeasured the previous ties as shown below.

Physical description of the monument set:

Set a gearheaded spike for the corner.

Describe the accessories used to perpetuate the corner. Include a plan view drawing and accessories found/set. Describe measuring point on bearing trees. Show any topographic features that would aid in future recovery of the corner.

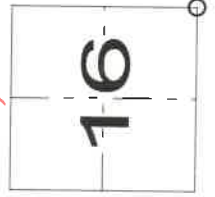


Tie notes. A, B, C and D are rebars found
 A is 3 ft east of power pole
 B is 0.3' off SE corner of concrete slab
 D is 5 ft. NNE from largest white pine
 E is brass cap in SW wingwall on bridge

Field book: FB 17-16



Index No. N 13 31-10



D. E. Tlusty
1/3/2020

○ = corner perpetuated
 The Southeast corner of Section 16, T. 31 N., R. 10 E., Langlade County, WI

I, David E. Tlusty, Registered Land Surveyor, as Langlade County Surveyor, certify that the corner location on this record was determined by me and that this U.S. Public Land Survey Monument Record is correct to the best of my knowledge and belief.

43110160000

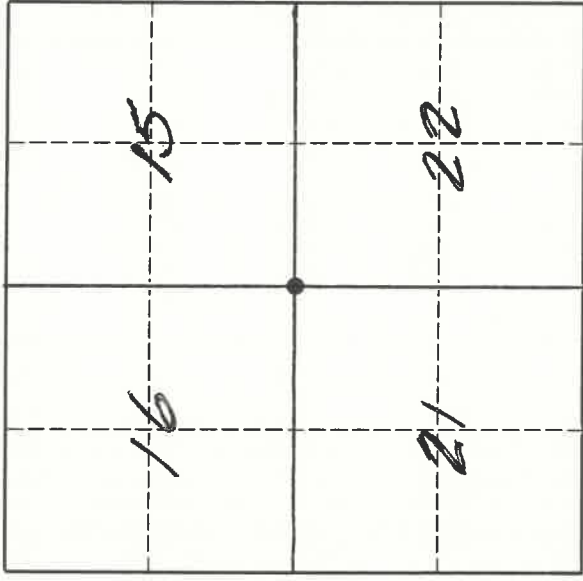
U. S. PUBLIC LAND SURVEY MONUMENT RECORD

INSTRUCTIONS:

This record shall show the location of the corner and shall include all of the following nine elements (a through i).

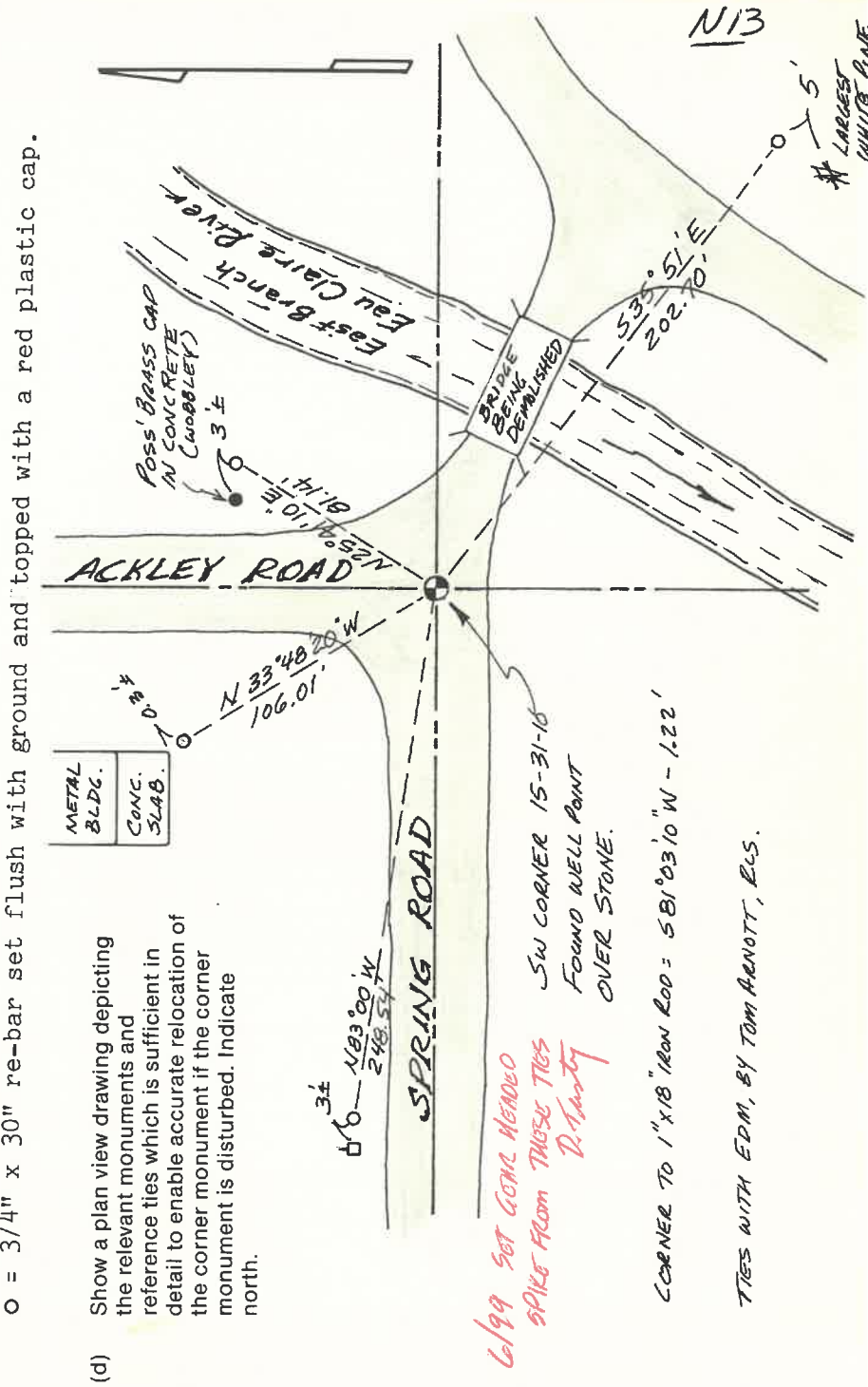
- (a) Identify the corner by reference to the U.S. public land survey system.
- = Corner monument restored.

The Southwest corner of Section 15, Township 31 North, Range 10 East, Langlade County, Wisconsin.



T. 31 N., R. 10 E.

- (b) Describe any record evidence, monument evidence, occupational evidence, testimonial evidence or any other material evidence you considered, and whether the monument was found or placed.
 The original corner was established in 1860 by Hiram C. Fellows. OBT's: cherry, 10", S33W, 25 lks, and a cherry, 10"; N18E, 18 lks. In 1902, Dorr found original stumps and marks, and made new BT's. In 1904, Dorr used this corner for survey work in Section 21 and set many well points for corners, but didn't mention what was at this corner. In 1905, Dorr did survey work in Section 15, but didn't mention what was at this corner. In 1938, Hutchinson described this corner as an iron, 1 1/4" x 18", and measured ties to the bridge abutments. Poss, in 1969, apparently did not find Hutchinsons iron, but established the corner from Hutch's ties and set new reference monuments. On 05/26/95, D. Flusty & T. Arnott dug with a backhoe. About 1' below the road surface, we found a 1" x 18" iron rod that I believe to be the iron mentioned by Hutchinson. About 2.5' down, we found a 1 1/4" x 24" well point, set over (cont)
- (c) In the plan view drawing below, provide reference ties to at least 4 witness monuments, or, if the location is within a municipality, to at least 2 witness monuments. (Witness monuments shall be made of concrete, natural stone, iron or other equally durable material.)
 Describe witness monuments.
 O = 3/4" x 30" re-bar set flush with ground and topped with a red plastic cap.
 FBS-154



- (d) Show a plan view drawing depicting the relevant monuments and reference ties which is sufficient in detail to enable accurate relocation of the corner monument if the corner monument is disturbed. Indicate north.

TIES WITH EDM, BY TOM ARNOTT, RLS.

43110160000

Describe any material discrepancy between the location of the corner as restored or reestablished and the location of that corner as previously restored or reestablished by distance and direction. Show the discrepancy on the plan view drawing under (d), above. Show the distances between the corner as previously restored or reestablished and (1) the corner as restored or reestablished, and (2) to at least 2 of the witness monuments shown on the drawing in (d), above.

- (f) Was the corner restored through acceptance of (1) an obliterated evidence location, or, (2) a found perpetuated location?
(continued from front side)
a 12" x 12" x 24" stone. As Dorr found the original BT's in 1902, and set many well points in his survey work in Section 21 in 1904, I accept the location of the well point found as the best evidence of the original corner location. I believe that both Hutchinson & Poss did not find Dorrs' well point because of the iron in the nearby bridge, that may have made their dip needles ineffective. I believe that Hutchinson set his iron by backtracking measurements of Dorrs', and Poss set his corner from Hutchinsons ties. It is also worth mentioning that Dorr used stones as markers and he may have set the stone we found when he first found the original stumps in 1902.
- (g & h) Was the corner reestablished through lost corner proportionate methods? If so, show the method, including the directions and distances to other public land survey corners used as evidence or used for proportioning in determining the corner location.
corner from Hutchinsons ties. It is also worth mentioning that Dorr used stones as markers and he may have set the stone we found when he first found the original stumps in 1902.

(i) I, DAVID E. TLUSTY, LANGLADE COUNTY SURVEYOR
(type or print name)

certify that the corner location shown on this record was determined by me or under my direction and control and that this U.S. Public Land Survey Monument Record is correct and complete to the best of my knowledge and belief.

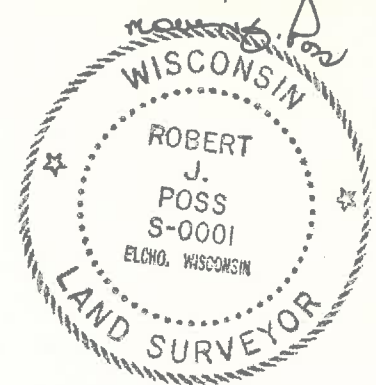

Signature

6/8/95
Date



CERTIFIED LAND CORNER RESTORATION

31-10
Index No. N-13



State of Wisconsin }
County of LANGLADE } ss.

I, ROBERT J. POSS, do hereby certify that on the 12TH day of JULY, 1969, I found evidence of the SECTION corner of SECS. 15-16-21-22 Township 31, North, Range 10 EAST, Fourth, Principal Meridian, as described hereon; and that from this evidence I established a new monument and accessories as described hereon to perpetuate the original location of this corner.

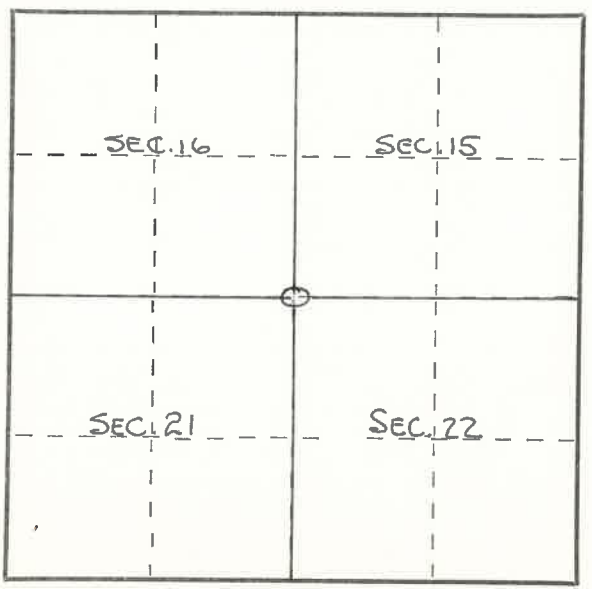
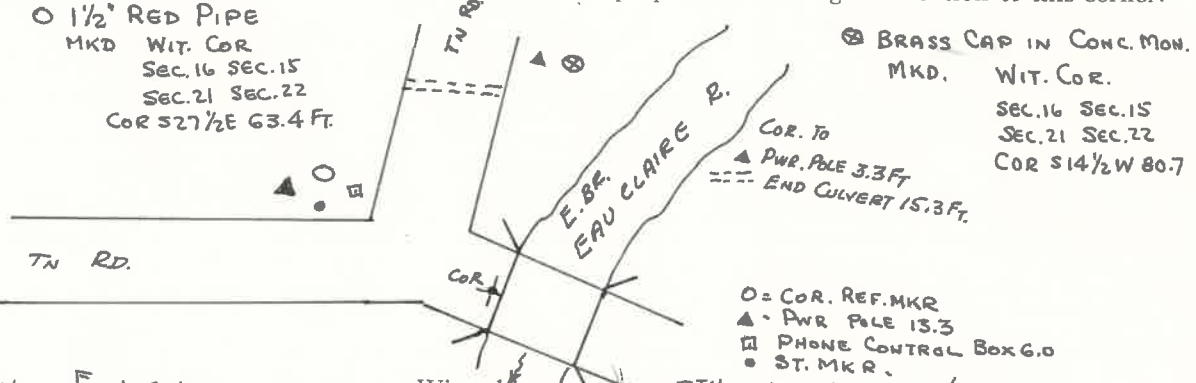
History of original corner establishment:

Description of corner evidence found:

REFERENCE TO WEST BRIDGE ABUTMENTS BY HUTCHINSON
N 45° E 28(LKS) }
S 38 1/2° E 26(LKS) } 1 1/4' x 18" IRON PIPE } 1938
NOT FOUND }

Resident witnesses:

Description of monument and accessories I established to perpetuate the original location of this corner.



○ = Corner monument restored.

Dated at ELCHO, Wis., this 12TH day of JULY, 1969.

Signature Robert J. Poss Title REG. LAND SURVEYOR Registration No. S-0001
(County Surveyor, Registered Land Surveyor, or other duly authorized official)

Office of Register of Deeds, County of _____, I hereby certify that the within instrument was filed in this office for record on the _____ day of _____, 19____ at _____ o'clock _____ M.

(Register of Deeds)

By _____ Deputy

FORM 985 H. C. MILLER CO., MILWAUKEE

431160000