

4311015 2000 2022

# U.S. PUBLIC LAND SURVEY MONUMENT RECORD LANGLADE COUNTY, WISCONSIN

WI CORNER IDENTIFICATION NO: 43110152000  
COUNTY CORNER NO: L17

MONUMENT TYPE: 1.00" IRON PIPE WITH CAP

HORIZONTAL DATUM: NAD 83 ADJUSTMENT 2011 (WISCORS)

LANGLADE COUNTY COORDINATE: N= 350819.292 E= 602788.261

LATITUDE: \_\_\_\_\_ LONGITUDE: \_\_\_\_\_ ELLIPSOID HEIGHT: \_\_\_\_\_

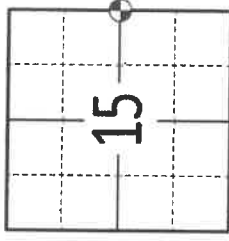
DATE OF SURVEY: 7-27-2022

SURVEY PARTY: T. RUTZEN & K. SCHUMACHER

SECTION 15

TOWNSHIP 31

RANGE 10



(INDICATE CORNER BY ☉ )

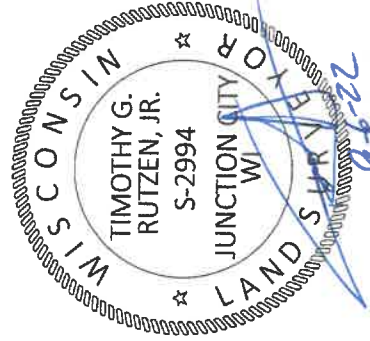
### BASIS FOR MONUMENT LOCATION

(BRIEF DESCRIPTION OF CORNER HISTORY)

**1911:** NOTES BY M. HUTCHINSON (PAST COUNTY SURVEYOR) IN FIELD BOOK 94 PG 93, DESCRIBED THIS CORNER AS "STAKE SET IN MARSH, NO TREES".

**1999:** PLS 1390, D. TLUSTY FOUND AN OLD FENCE CORNER ALMOST ON GROUND AT CORNER LOCATION WITH FENCE RUNNING NORTH, SOUTH AND EAST. LOCATION AGREED WITH DISTANCE TO NORTH AND ACCEPTED AS BEST EVIDENCE OF ORIGINAL LOCATION. SET 1.00" IRON PIPE WITH CAP AT FENCE CORNER AND RETIED CORNER.

**2022:** PLS 2994, T. RUTZEN FOUND A 1.00" IRON PIPE WITH CAP AT CORNER LOCATION AND 3 EXISTING BEARING TREES. THE FOUND EVIDENCE AGREED WITH CORNER LOCATION, ACCEPTED AS CORRECT, SET 4 NEW TIES AND RE-TIED CORNER.



SEAL:

DATA SHOWN HERE ON THIS SHEET IS CORRECT AND COMPLETE TO THE BEST OF MY KNOWLEDGE AND BELIEF

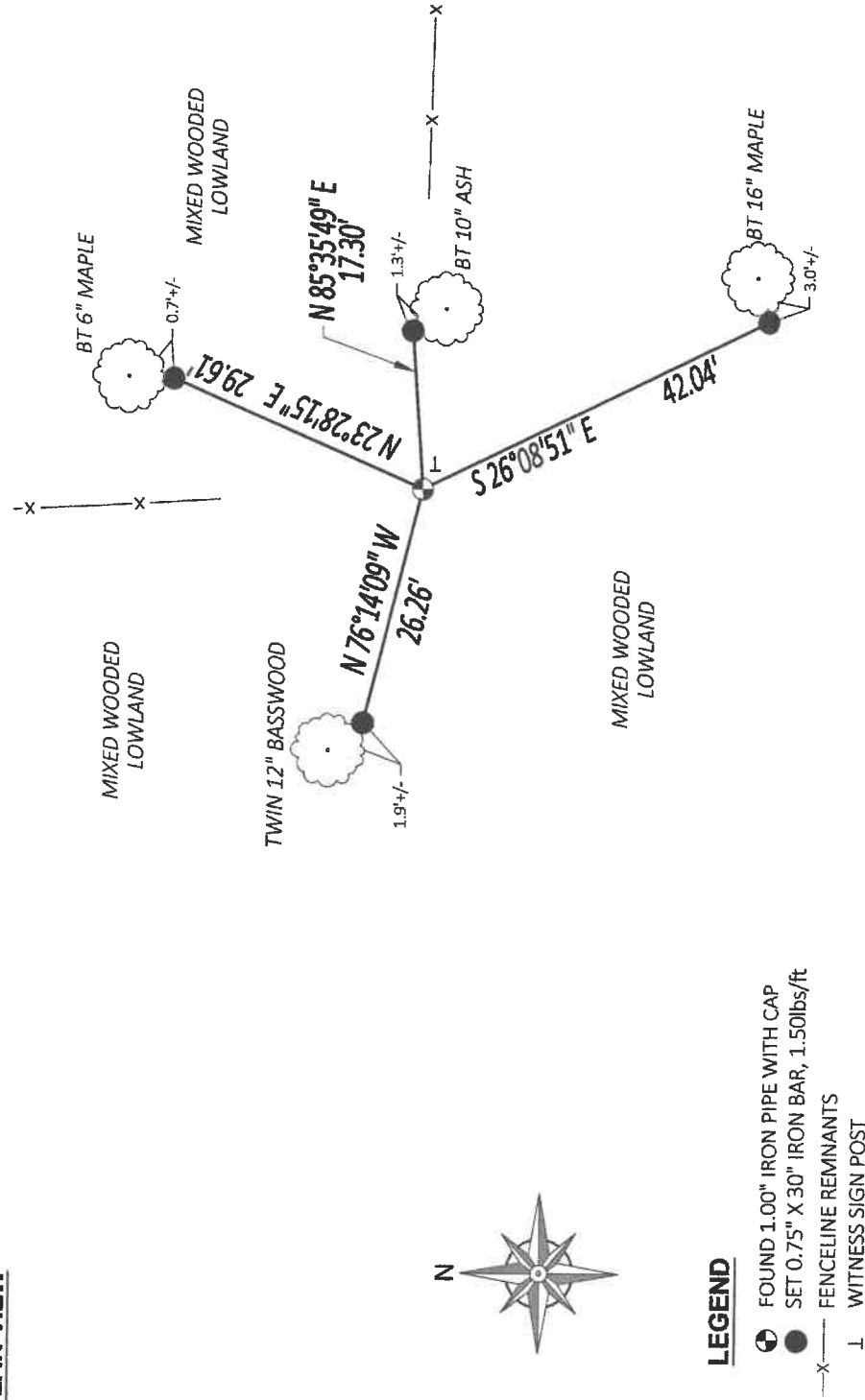
SIGNATURE:

TIMOTHY G. RUTZEN, PLS 2994

DATE:

9-6-22

### PLAN VIEW



### LEGEND

- ☉ FOUND 1.00" IRON PIPE WITH CAP
- SET 0.75" X 30" IRON BAR, 1.50lbs/ft
- X- FENCELINE REMNANTS
- I WITNESS SIGN POST

# LANGLADE COUNTY U.S. PUBLIC LAND CORNER RESTORATION

The West Quarter corner of Section 14, T. 31 N., R. 10 E., Langlade County, WI.

**Corner was: (check all that apply)**

4/3110152000

- Restored through acceptance of an obliterated evidence location.
- Restored through acceptance of a found perpetuated location.
- Determined to be lost and re-established through proportionate methods.
- Show bearings and distances to PLSS corners used for proportioning, and show original distances).
- Restored/recovered/re-established in a location that differs from a previously established position.
- (Show difference in plan view below).
- Check here if addition information is shown on the reverse side of this form.

**Describe record evidence, recovered physical evidence, occupational evidence, testimonial evidence and all other evidence considered in the recovery/restoration of the corner.**

The original corner was established in 1860 by Hiram C. Fellows. Original bearing trees: tamarac, 6", N35°W, 6 links, and a spruce, 7", S81°E, 12 lks. In 1911, E.S. Brooks, described this corner as "stake set by Dorr in marsh no trees".

Dorr measured north, 39.00 chains (2574') to section corner.

10/06/99 D. Tlusty, Dean Williams found very old fence corner post, almost completely on ground. Fence run north, south and east from this post. With 1 meter GPS, check to section corner to North and get 2579± which is in agreement with Brooks. Accepted fence corner post as the best evidence of the corner location.

**Physical description of the monument set:**

05/04/00 D. Tlusty, Jim Robl set a new 1" x 60" iron pipe with 2" aluminum cap, up 0.6' for the corner.

**Describe the accessories used to perpetuate the corner. Include a plan view drawing and accessories found/set. Describe measuring point on bearing trees. Show any topographic features that would aid in future recovery of the corner.**

**LEGEND**

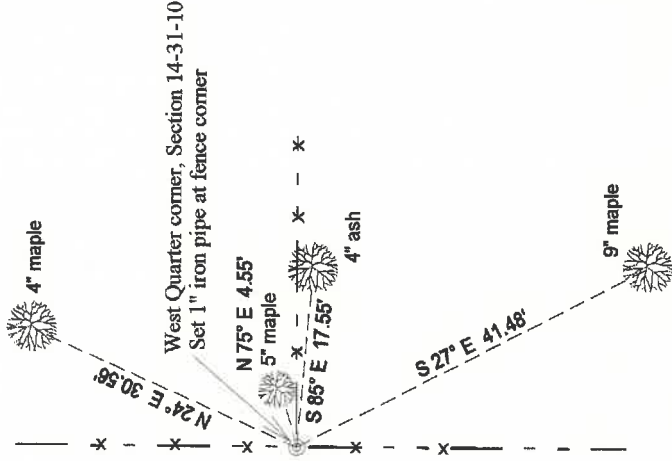
Set aluminum nail in low blaze on the right side side of trees shown, except closest tree, nail is on left side.

BT's have aluminum signs and are painted blue.

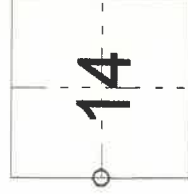
Tie bearings magnetic with hand compass.

DT RTK 83(91)  
N 350819.379  
E 602788.154

Field book: F817-32



Index No.                      L17 31-10



○ = corner perpetuated

The West Quarter corner of Section 14, T. 31 N., R. 10 E., Langlade County, WI

I, David E. Tlusty, Registered Land Surveyor, as Langlade County Surveyor, certify that the corner location on this record was determined by me and that this U.S. Public Land Survey Monument Record is correct to the best of my knowledge and belief.