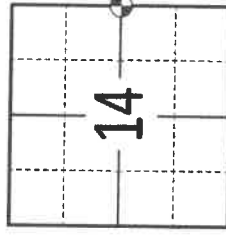


U.S. PUBLIC LAND SURVEY MONUMENT RECORD LANGLADE COUNTY, WISCONSIN

4311014 2000 2022
WI CORNER IDENTIFICATION NO: 43110142000
COUNTY CORNER NO: L21

MONUMENT TYPE: 1.00" O.D. IRON PIPE
 HORIZONTAL DATUM: NAD 83 ADJUSTMENT 2011 (WISCORS)
 LANGLADE COUNTY COORDINATE: N= 350665.900 E= 608200.604
 LATITUDE: LONGITUDE: ELLIPSOID HEIGHT:
 DATE OF SURVEY: 7-27-2022
 SURVEY PARTY: T. RUTZEN & K. SCHUMACHER

SECTION 14
 TOWNSHIP 31
 RANGE 10



FOUND SET RE-SET RE-TIED

(INDICATE CORNER BY (●))

BASIS FOR MONUMENT LOCATION

(BRIEF DESCRIPTION OF CORNER HISTORY)

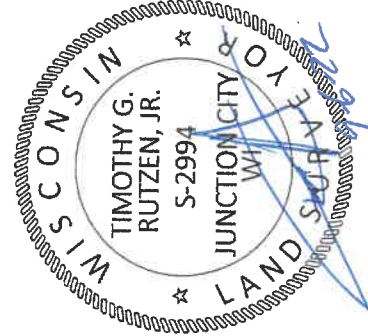
2008: PLS 2517, C. BRINKMEIER INDICATED SETTING THE 1/16TH CORNER TO SOUTH AND A 2.00" IRON PIPE WITH CAP AT EAST 1/4 CORNER LOCATION PER CSM, DOC.398580, VOL. 15 PG. 011.

2016: PLS 2671, T. RUSCH CALCULATED CORNER AS SHOWN ON PLAT OF SURVEY DATED 8/22/2016. SET INTERIOR 40 CORNERS BASED ON THIS CALCULATION USING A STANDARD QUARTER SECTION BREAKDOWN.

2019: PLS 2671, T. RUSCH FOUND NAIL AT CORNER SHOWN ON PLAT OF SURVEY DATED 12/14/2019 FOR SECTION 13.

2022: PLS 2994, T. RUTZEN SEARCHED FOR NAIL, BUT FOUND NO MONUMENT AT CORNER LOCATION. ALL 1/16TH CORNERS THAT WERE SET WITHIN THE SE 1/4 OF SECTION 14 ARE BASED USING A STANDARD QUARTER SECTION BREAKDOWN. HELD THE DOUBLED DISTANCE FROM FOUND IRONS TO SOUTH ON THE BRINKMEIER CSM VOL. 15 PG 011. SAID COMPUTED LOCATION AGREED WITH DISTANCE FROM NE CORNER OF SECTION 14 FROM RUSCH PLAT OF SURVEY AND DISTANCES TO W 1/4 CORNER OF SECTION 14 AS SHOWN ON PREVIOUS PLAT OF SURVEYS AS WELL. HELD COMPUTED LOCATION AND A SET 1.00" O.D. IRON PIPE AT CORNER, SET 4 NEW TIES AND RE-TIED CORNER.

SEAL:



DATA SHOWN HERE ON THIS TIE SHEET IS CORRECT AND COMPLETE TO THE BEST OF MY KNOWLEDGE AND BELIEF

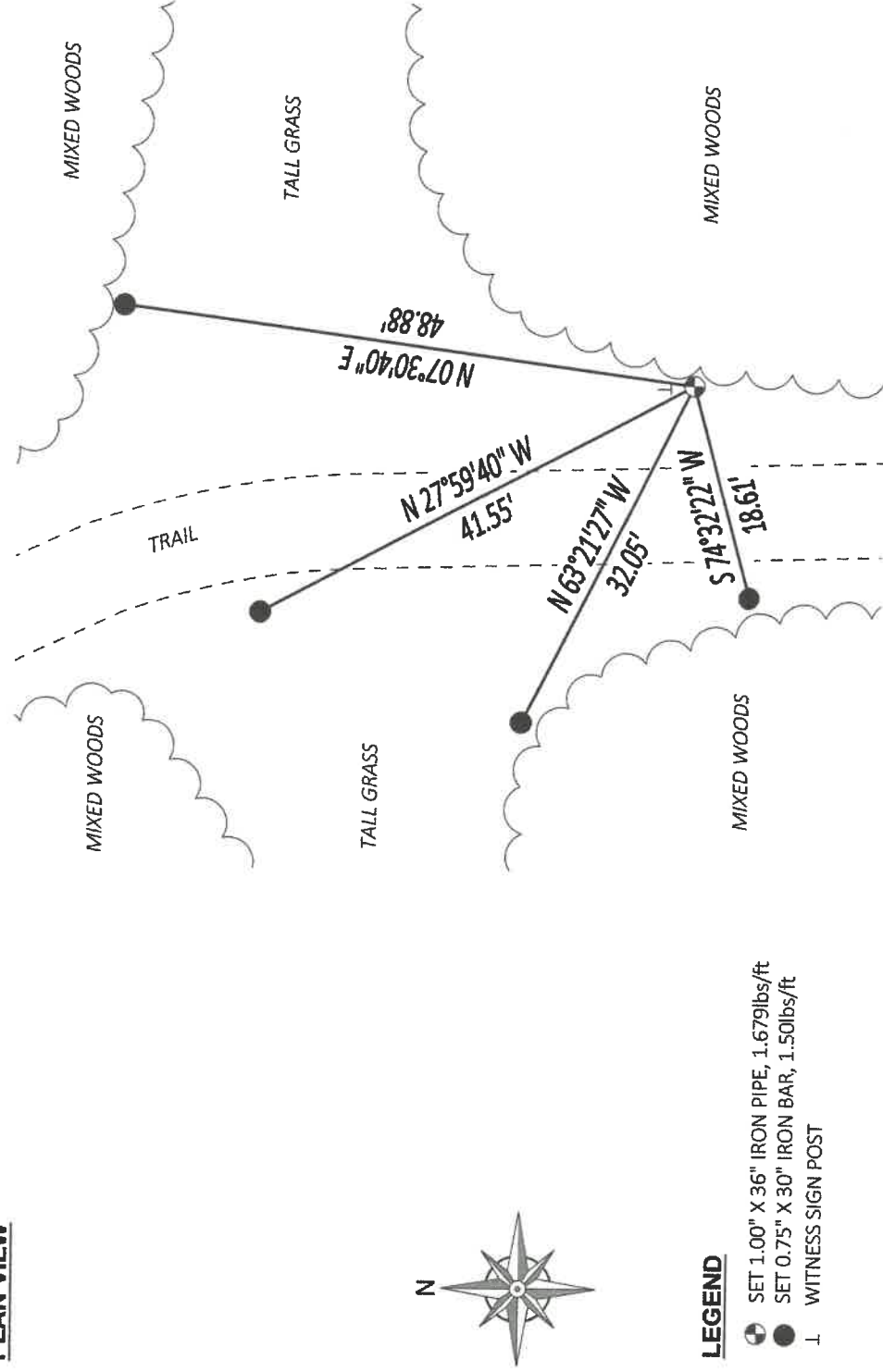
SIGNATURE:

TIMOTHY G. RUTZEN, PLS 2994

DATE:

7-26-22

PLAN VIEW



LEGEND

- SET 1.00" X 36" IRON PIPE, 1.679lbs/ft
- SET 0.75" X 30" IRON BAR, 1.50lbs/ft
- I WITNESS SIGN POST