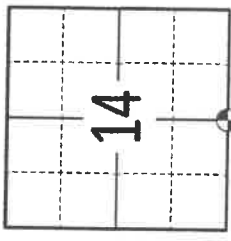


# U.S. PUBLIC LAND SURVEY MONUMENT RECORD LANGLADE COUNTY, WISCONSIN

4311014 0020 2022  
WI CORNER IDENTIFICATION NO: 43110140020  
COUNTY CORNER NO: N19

MONUMENT TYPE: SURVEY NAIL  
HORIZONTAL DATUM: NAD 83 ADJUSTMENT 2011 (WISCORS)  
LANGLADE COUNTY COORDINATE: N= 348180.941 E= 605727.823  
LATITUDE: LONGITUDE: ELLIPSOID HEIGHT:  
DATE OF SURVEY: 7-27-2022  
SURVEY PARTY: T. RUTZEN & K. SCHUMACHER

SECTION 14  
TOWNSHIP 31  
RANGE 10



FOUND  SET  RE-SET  RE-TIED

(INDICATE CORNER BY )

## BASIS FOR MONUMENT LOCATION

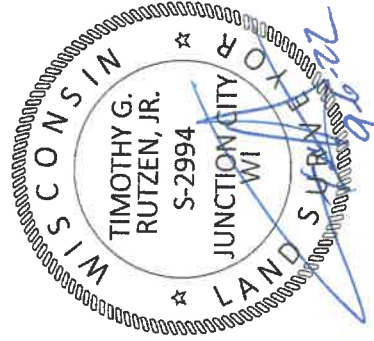
(BRIEF DESCRIPTION OF CORNER HISTORY)

**1995:** PLS 1390, D. TLUSTY EXCAVATED WITH BACKHOE AND FOUND A 10"X10" ROUND TOP STONE 3.1' BELOW ROAD SURFACE FLUSH WITH ORIGINAL GROUND SURFACE AND 1 PROPERTY CORNER TO BE USED AS A TIE. ACCEPTED AS CORRECT, SET 0.75" BAR ALONG WEST EDGE OF STONE FOR LOCATING, SET 4 NEW TIES AND RE-TIED CORNER.

**2008:** PLS 2517, C. BRINKMEIER FOUND A GEAR SPIKE AT CORNER LOCATION INDICATED ON CSM DOC.398580, VOL. 15 PG. 011.

**2022:** PLS 2994, T. RUTZEN FOUND NO GEAR SPIKE AT CORNER LOCATION. DID FIND 4 EXISTING TIES. NOTE: THE NW TIE WAS LAYING FLAT BELOW GROUND AND THE SE TIE WAS BENT BADLY AND LAYING FLAT BELOW GROUND. METAL DETECTOR INDICATED IRON BELOW ROAD SURFACE NEAR COMPUTED LOCATION BASED ON THE 2 EXISTING TIES, BUT WERE INSTRUCTED NOT TO EXCAVATE CORNER. THE COMPUTED LOCATION MATCHES RECORD DISTANCES TO THE N 1/4 CORNER, SW CORNER AND SE CORNER OF SECTION 14 FROM PRIOR CERTIFIED SURVEY MAPS AND PLAT OF SURVEYS. ACCEPTED COMPUTED LOCATION FROM TIES AS CORRECT, SET SURVEY NAIL AT CORNER LOCATION, SET 2 NEW TIES AND RE-TIED CORNER.

SEAL:

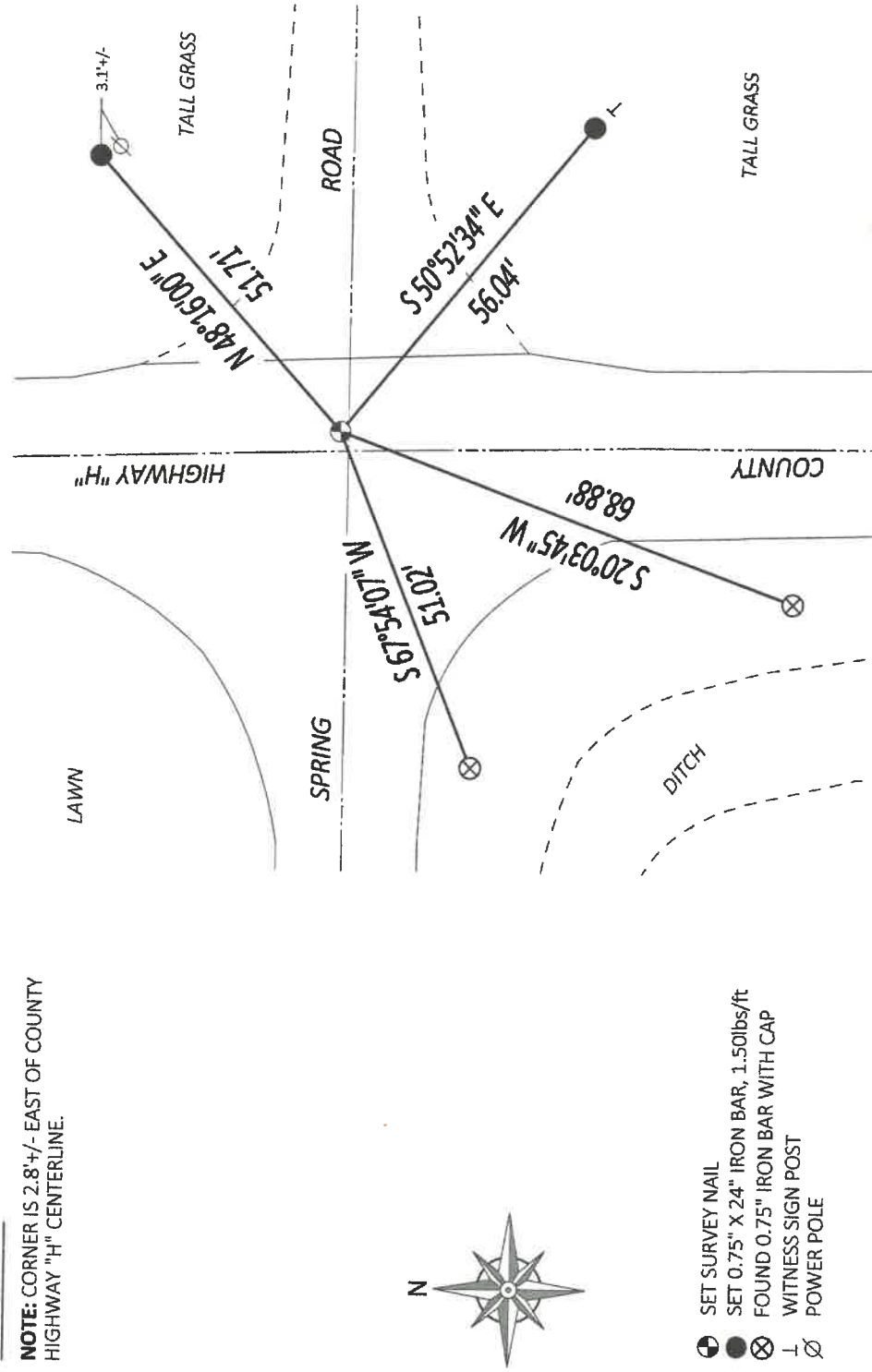


DATA SHOWN HERE ON THIS SHEET IS CORRECT AND COMPLETE TO THE BEST OF MY KNOWLEDGE AND BELIEF

SIGNATURE: TIMOTHY G. RUTZEN, PLS 2994  
DATE: 7-9-22  
9-6-22

## PLAN VIEW

NOTE: CORNER IS 2.8'+/- EAST OF COUNTY HIGHWAY "H" CENTERLINE.



- SET SURVEY NAIL
- SET 0.75" X 24" IRON BAR, 1.50lbs/ft
- ⊗ FOUND 0.75" IRON BAR WITH CAP
- ⊥ WITNESS SIGN POST
- ⊘ POWER POLE

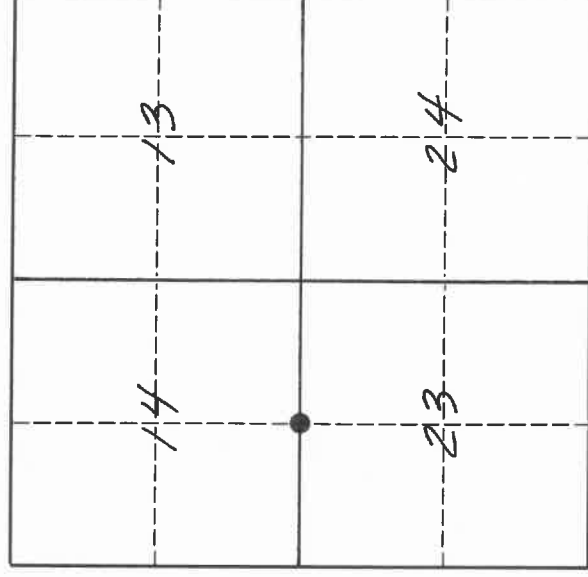
4311014000

# U. S. PUBLIC LAND SURVEY MONUMENT RECORD

## INSTRUCTIONS:

This record shall show the location of the corner and shall include all of the following nine elements (a through i).

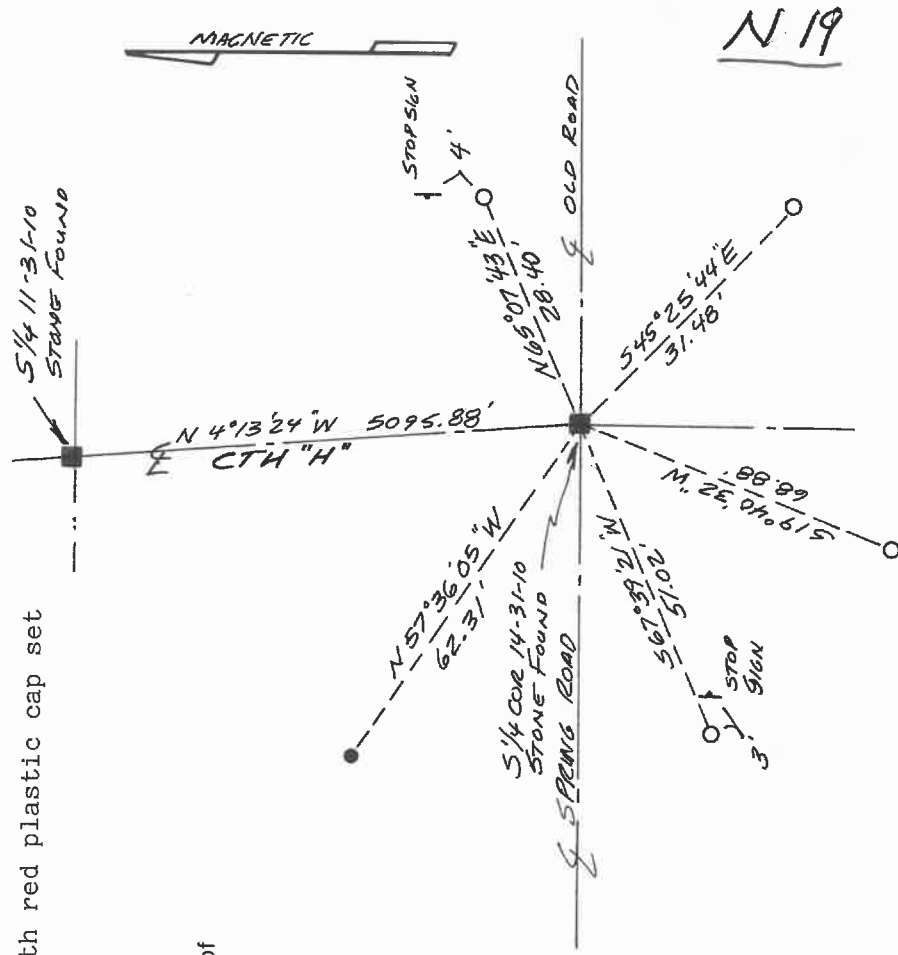
- (a) Identify the corner by reference to the U.S. public land survey system.
    - = Corner monument restored.
- The South Quarter corner of Section 14, Township 31 North, Range 10 East, Langlade County, Wisconsin.



T 31 N R 10 E

- (b) Describe any record evidence, monument evidence, occupational evidence, testimonial evidence or any other material evidence you considered, and whether the monument was found or placed. The original corner was established in 1860 by Hiram C. Fellows. OBT's: birch, 18", N11E, 29 lks., and a hemlock, 12", S02E, 62 lks. In 1911 Hutchinson described this corner as one original BT stump plainly marked and stone set by Weblly. 06/06/95 D. Tlusty and Mike Kielcheski dug with county backhoe. At a point of intersection of the apparent road centerlines, and 3.1' below the road surface, found a 10" x 10" round top stone, upright and flush with the original ground surface. Accepted stone found as the stone described by Hutchinson, and as the best evidence of the original corner location. Set 3/4" re-bar along west edge of stone to aid in future location of stone.

- (c) In the plan view drawing below, provide reference ties to at least 4 witness monuments, or, if the location is within a municipality, to at least 2 witness monuments. (Witness monuments shall be made of concrete, natural stone, iron or other equally durable material.) Describe witness monuments.
  - = 3/4" x 30" re-bar with red plastic cap set
  - = 1" iron pipe found
- (d) Show a plan view drawing depicting the relevant monuments and reference ties which is sufficient in detail to enable accurate relocation of the corner monument if the corner monument is disturbed. Indicate north.



DT ATK (83/91)

N 348180.88

E 605727.95

43110140020

Describe any material discrepancy between the location of the corner as restored or reestablished and the location of that corner as previously restored or reestablished by distance and direction. Show the discrepancy on the plan view drawing under (d), above. Show the distances between the corner as previously restored or reestablished and (1) the corner as restored or reestablished, and (2) to at least 2 of the witness monuments shown on the drawing in (d), above.

No discrepancy.

(f) Was the corner restored through acceptance of (1) an obliterated evidence location, or, (2) a found perpetuated location?  
Found perpetuated location.

(g & h) Was the corner reestablished through lost corner proportionate methods? If so, show the method, including the directions and distances to other public land survey corners used as evidence or used for proportioning in determining the corner location.  
No.

(i) I, David E. Tlusty, Langlade County Surveyor,  
(type or print name)

certify that the corner location shown on this record was determined by me or under my direction and control and that this U.S. Public Land Survey Monument Record is correct and complete to the best of my knowledge and belief.

  
Signature

Date

6/7/95

