

CERTIFIED LAND CORNER RESTORATION

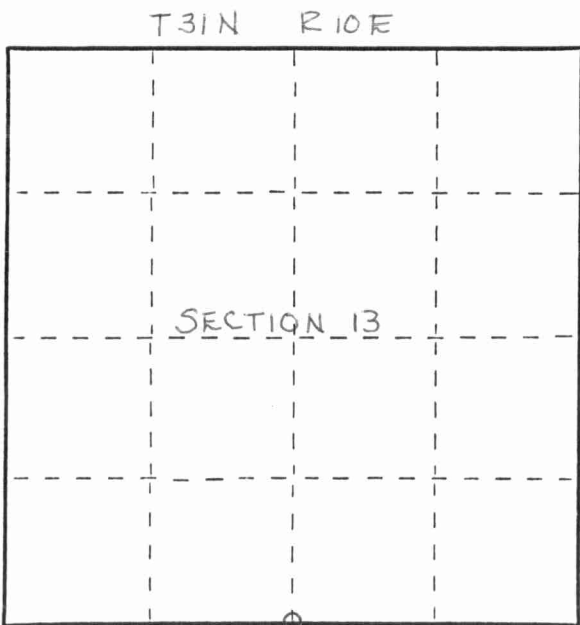
Index No. N-23

State of Wisconsin }
County of LANGLADE } ss.

I, MARK A. STIBBE, do hereby certify that on the 15TH day of MAY, 1982, I found evidence of the SOUTH 1/4 corner of SECTION 13 Township 31, North, Range 10 EAST, Fourth Principal Meridian, as described hereon; and that from this evidence I established a new monument and accessories as described hereon to perpetuate the original location of this corner.

Resident witnesses:

.....
.....
.....



○ = Corner monument restored.

History of original corner establishment:

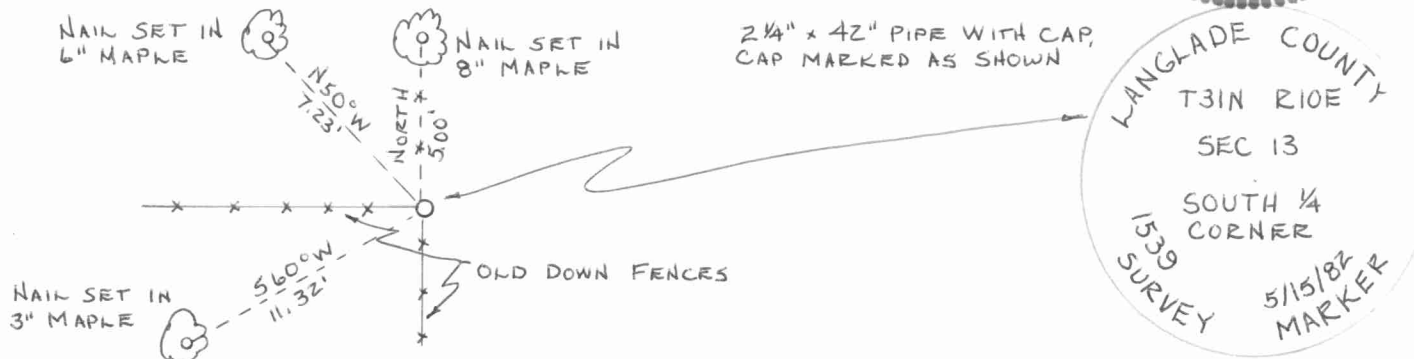
POST SET BY HIRAM FELLOWS IN AUGUST, 1860
POST CALLED OUT BY B.F. DORR NOTES OF NOVEMBER 27, 1903

Description of corner evidence found:

FOUND NO EVIDENCE OF ORIGINAL POST. SET MONUMENT AT INTERSECTION OF OLD DOWN FENCES.



Description of monument and accessories I established to perpetuate the original location of this corner:



Dated at ANTIGO, Wis., this 15TH day of MAY, 1982

Signature Mark A. Stibbe Title REGISTERED LAND SURVEYOR Registration No. 1539
(County Surveyor, Registered Land Surveyor, or other duly authorized official)

Office of Register of Deeds, County of....., I hereby certify that the within instrument was filed in this office for record on the..... day of....., 19..... at..... o'clock..... M.

.....
(Register of Deeds)

By..... Deputy

FORM 983 H. C. MILLER CO., MILWAUKEE

4311013000

