

4311012 0020

# U.S. PUBLIC LAND SURVEY MONUMENT RECORD

(Prepared and as required by S. A-E 7.08 WI Administrative Code)

The NORTH 1/4 corner of Section 13, T. 31 N., R. 10 E., Langlade County, WI  
Corner was (check all that apply)

- Restored through acceptance of an obliterated evidence location.
- Restored through acceptance of a found perpetuated location.
- Determined to be lost and re-established through proportionate methods. (show bearings and distances to PLSS corners used for proportioning.)
- Restored/recovered/re-established in a location that differs from a previously established position. (Show difference in plan view below.)
- Check here if additional information is shown on the reverse side of this form.

**Describe record evidence, recovered physical evidence, occupational evidence, testimonial evidence, and all other evidence considered in the recovery/restoration of the corner.**

1860 - Government Surveyor H.C. Fellows set corner in original survey and references two bearing trees; 6" Tamarac, N23°W, 11 links; 8" Tamarac, S10°W, 16 links.

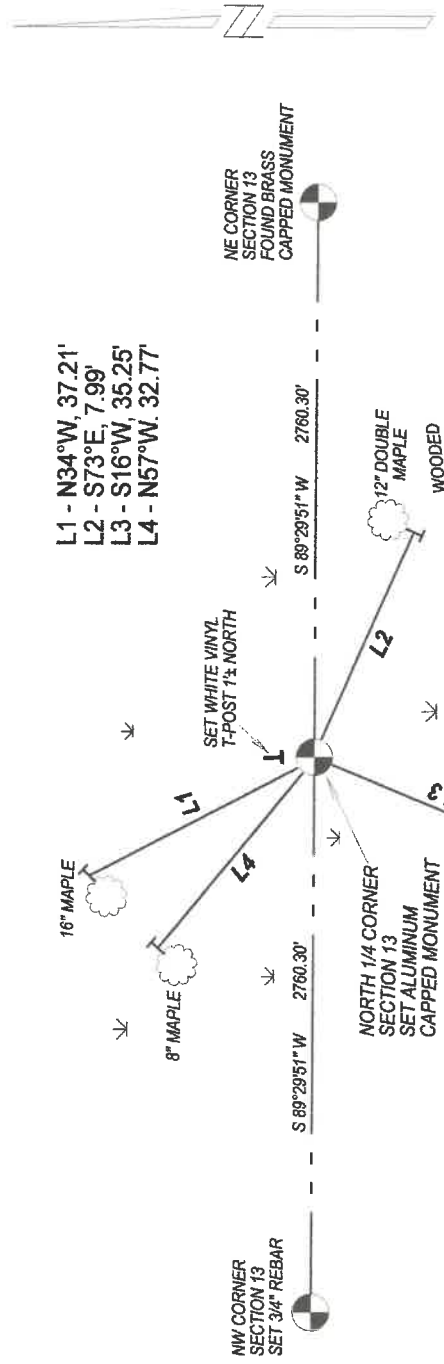
1903 - Surveyor Dorr surveying in Section 13 references a distance 79.52 chains (5248.32') from the South 1/4 Corner to the North 1/4 Corner of Section 13.

2019 - Surveying in Section 13 I did not find any evidence of the corner or original bearing trees. Dorr's distance to the South 1/4 Corner (5248.32') matches well with my measured (5259.00') using a prorated corner location. No other evidence could be located.

### Physical description of the monument set:

I set a Bernsten 30" aluminum drive-in monument with a 2 1/2" aluminum cap at the corner location and tied it out as follows.

Describe the accessories used to perpetuate the location of the corner. Include a plan view drawing and indicate accessories found/set. Describe measuring point on bearing trees. Show any topographic features that would aid in future recovery of the corner.



### Notes:

- Not drawn to scale.
- Bearings taken with compass.
- Bearing trees blazed at chest and low side blaze.
- Bearing tree plaquards nailed chest high.
- Measurement to nail set in base of tree.

The NORTH 1/4

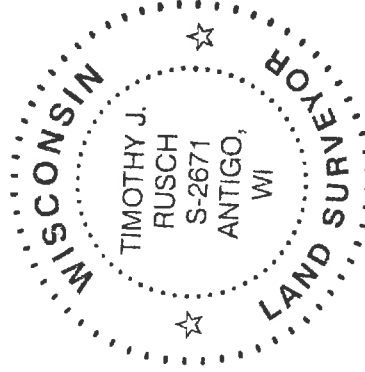
Corner of Section 13

T. 31 N., R. 10 E.  
Langlade County, WI



SURVEYORS SEAL

INDEX No. **J 23** 31-10



● = Location of corner

I, Timothy J. Rusch

certify that the corner location shown on this record was determined by me or under my direction and control and that this U.S. Public Land Survey Monument Record is correct and complete to the best of my knowledge and belief.

Timothy J. Rusch 07-21-2020  
Signature Date