

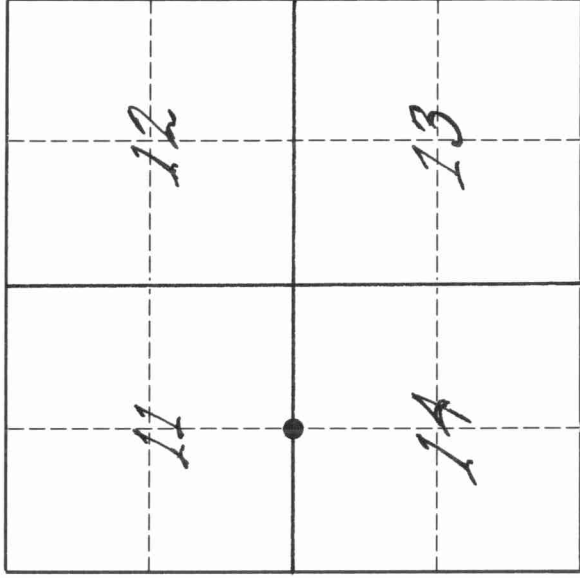
43110110020

U. S. PUBLIC LAND SURVEY MONUMENT RECORD

INSTRUCTIONS:

This record shall show the location of the corner and shall include all of the following nine elements (a through i).

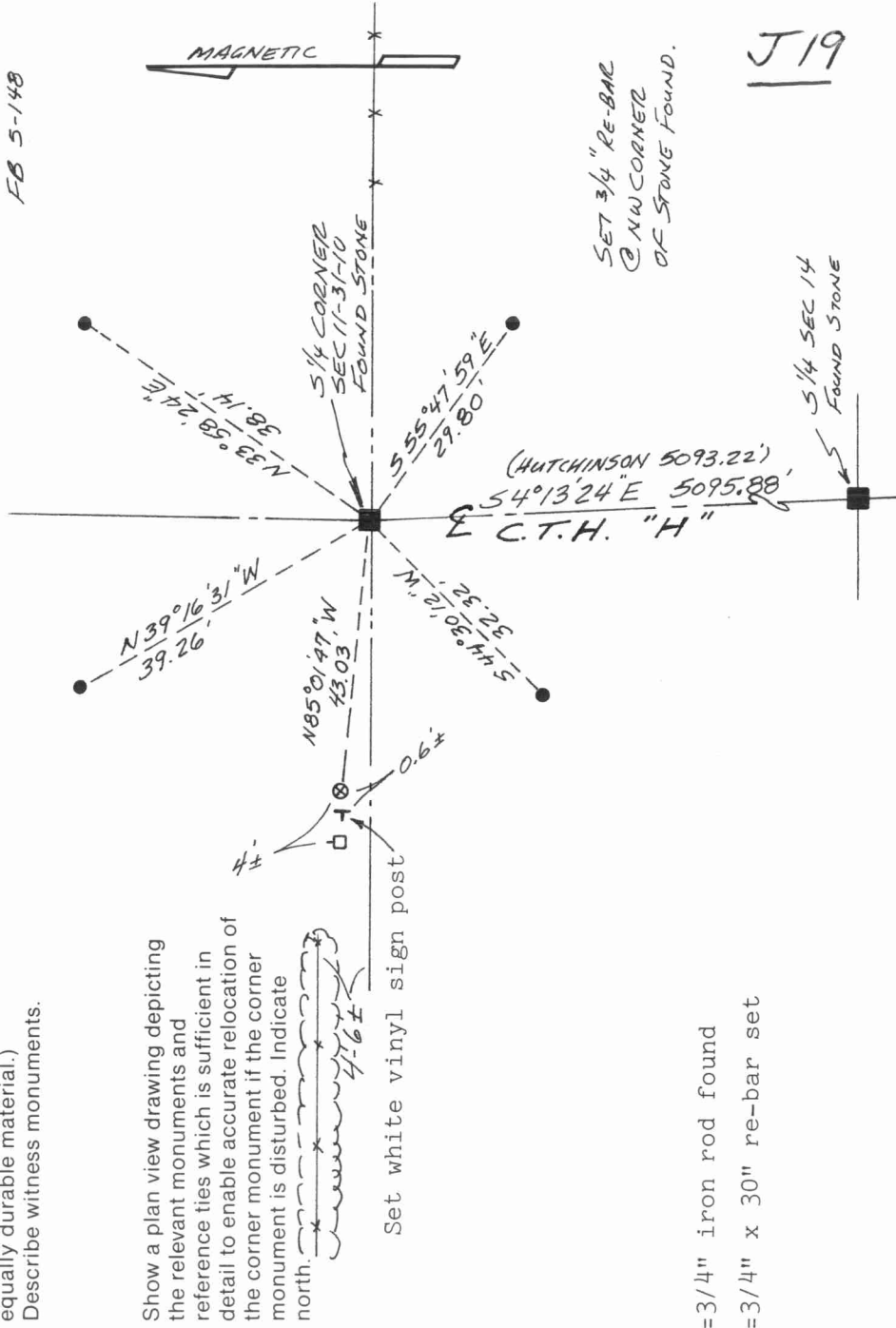
- (a) Identify the corner by reference to the U.S. public land survey system.
- = Corner monument restored.



The South Quarter corner of Section 11, Township 31 North, Range 10 East, Langlade County, Wisconsin.

T31N, R.10E.

- (b) Describe any record evidence, monument evidence, occupational evidence, testimonial evidence or any other material evidence you considered, and whether the monument was found or placed.
 The original corner was established in 1860 by Hiram C. Fellows. OBT's: birch, 12", N14W, 12 lks, and a sugar, 12", S32E, 42 lks. In 1877, Deliglese (FB141-121) measured north-south quarter line (77.17 ch.) thru Sec. 14 and marked new bearing trees for this corner. In 1911, Hutchinson measured north-south quarter line in Sec. 14 and set a stone (12" x 12") with + on top for this corner. 06/06/95 D. Tlusty and Mike Kielcheski dug with county backhoe. At a point in line with a fence to the east and on the centerline of CTH "H", found a 12" x 12" stone (no visible +) 2.9' below road surface. Top of stone is even with original soil surface which is marked by a 1" thick rotted black layer of soil. Accepted this stone as the stone set by Hutchinson and as the best evidence of the original corner location. This stone is approximately S44E, 2.4' from a PK nail previously perpetuated by Ed. Abendroth in 1987.
- (c) In the plan view drawing below, provide reference ties to at least 4 witness monuments, or, if the location is within a municipality, to at least 2 witness monuments. (Witness monuments shall be made of concrete, natural stone, iron or other equally durable material.)
 Describe witness monuments.
 FB 5-148



- = 3/4" iron rod found
- ⊗ = 3/4" x 30" re-bar set

43110110820

Describe any material discrepancy between the location of the corner as restored or reestablished and the location of that corner as previously restored or reestablished by distance and direction. Show the discrepancy on the plan view drawing under (d), above. Show the distances between the corner as previously restored or reestablished and (1) the corner as restored or reestablished, and (2) to at least 2 of the witness monuments shown on the drawing in (d), above.

The stone found is approximately S44E, 2.4' from a PK nail previously found and perpetuated by Ed. Abendroth in 1987.

- (f) Was the corner restored through acceptance of (1) an obliterated evidence location, or, (2) a found perpetuated location?
A found perpetuated location.

- (g & h) Was the corner reestablished through lost corner proportionate methods? If so, show the method, including the directions and distances to other public land survey corners used as evidence or used for proportioning in determining the corner location.

No.



- (i) I, David E. Tlusty, Langlade County Surveyor,
(type or print name)

certify that the corner location shown on this record was determined by me or under my direction and control and that this U.S. Public Land Survey Monument Record is correct and complete to the best of my knowledge and belief.

David E. Tlusty June 7, 1995
Signature Date