

LANGLADE COUNTY U.S. PUBLIC LAND CORNER RESTORATION

The East Quarter corner of Section 10, T. 31 N., R. 10 E., Langlade County, WI.

Corner was: (check all that apply)

43110102000

- Restored through acceptance of an obliterated evidence location.
- Restored through acceptance of a found perpetuated location.
- Determined to be lost and re-established through proportionate methods.
- Show bearings and distances to PLSS corners used for proportioning, and show original distances).
- Restored/recovered/re-established in a location that differs from a previously established position.
- (Show difference in plan view below).
- Check here if additional information is shown on the reverse side of this form.

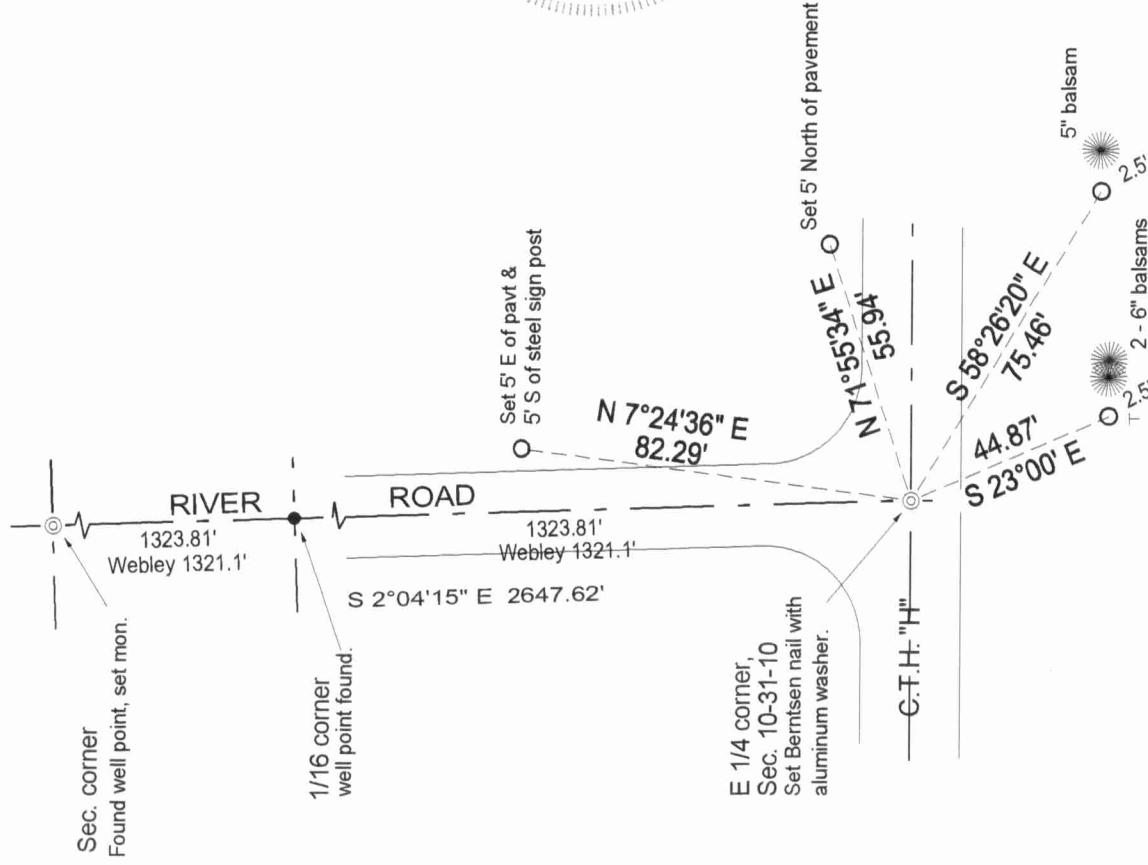
Describe record evidence, recovered physical evidence, occupational evidence, testimonial evidence and all other evidence considered in the recovery/restoration of the corner.

The original corner was established in 1860 by Hiram C. Fellows. Original bearing trees: sugar, 6", N25°W, 50 links, and an elm, 12", S45°E, 13 lks. Webley used this corner for a subdivision survey of the NE quarter of Section 10 but he didn't describe it. I re-established this corner after recovering Webleys well points at the 1/16th and section corner to the north, by extending that line and doubling the distance.

Physical description of the monument set:

I set a 2" x 30" iron pipe with brass cap for the corner.
08/01/03 set Berntsen SN-1 nail in new pavement.

Describe the accessories used to perpetuate the corner. Include a plan view drawing and accessories found/set. Describe measuring point on bearing trees. Show any topographic features that would aid in future recovery of the corner.



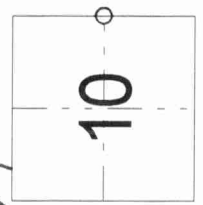
LEGEND

- 3/4" x 30" rebar set
 - ⊥ white vinyl sign post set
- Bearings referenced to Langlade County Coordinate System grid.

Field book: FB17-35



Index No. G17 31-10



○ = corner perpetuated
The East Quarter corner of Section 10, T. 31 N., R. 10 E., Langlade County, WI

I, David E. Tlusty, Registered Land Surveyor, as Langlade County Surveyor, certify that the corner location on this record was determined by me and that this U.S. Public Land Survey Monument Record is correct to the best of my knowledge and belief.