

4311010 0000 2022

# U.S. PUBLIC LAND SURVEY MONUMENT RECORD LANGLADE COUNTY, WISCONSIN

WI CORNER IDENTIFICATION NO: 43110100000  
COUNTY CORNER NO: J17

MONUMENT TYPE: 1.00" O.D. ALUMINUM PIPE WITH LANGLADE COUNTY CAP

HORIZONTAL DATUM: NAD 83 ADJUSTMENT 2011 (WISCORS)

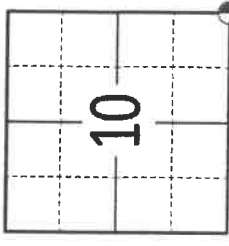
LANGLADE COUNTY COORDINATE: N= 353388.981 E= 602653.998

LATITUDE: \_\_\_\_\_ LONGITUDE: \_\_\_\_\_ ELLIPSOID HEIGHT: \_\_\_\_\_

DATE OF SURVEY: 7-27-2022

SURVEY PARTY: T. RUTZEN & K. SCHUMACHER

SECTION 10  
TOWNSHIP 31  
RANGE 10



(INDICATE CORNER BY ☉ )

FOUND  SET  RE-SET  RE-TIED

## BASIS FOR MONUMENT LOCATION

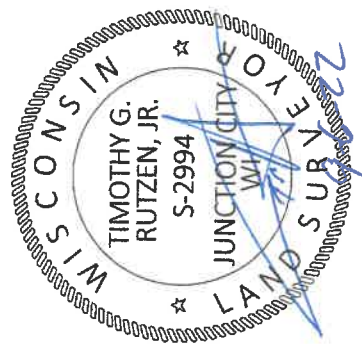
(BRIEF DESCRIPTION OF CORNER HISTORY)

**1911:** NOTES BY M. HUTCHINSON (PAST COUNTY SURVEYOR) IN FIELD BOOK 94 PG 93, PROVIDES DISTANCE OF 39.00 CHAINS FROM SOUTH 1/4 CORNER OF SECTION 10 TO SE CORNER OF SECTION 10, BEARING TREES NOTED.

**1926:** NOTES BY M. HUTCHINSON (PAST COUNTY SURVEYOR) IN FIELD BOOK 122, PG 116, PROVIDES DISTANCE OF 39.70 CHAINS FROM SOUTH 1/4 CORNER OF SECTION 10 TO SE CORNER OF SECTION 10, BEARING TREES NOTED.

**1999:** NOTES BY PLS 1390, D. TLUSTY (COUNTY SURVEYOR) FOUND NO MONUMENT AT CORNER AND 1 STUMP FROM BEARING TREE AND OLD FENCES DOWN TO EAST, WEST AND NORTH. SET A TEMPORARY 60D NAIL AT CORNER. NOTED DISTANCE OF 47.5' TO PINE STUMP BEARING N5°E AND CORNER 1.5'+/- NORTH OF 4" PLASTIC PIPE WITH 2" ROUND AND 1.25" SQUARE PIPE INSIDE.

**2022:** PLS 2994, T. RUTZEN FOUND NO MONUMENT OR TEMPORARY 60D NAIL AT CORNER LOCATION. DID LOCATE THE 4" PLASTIC PIPE WITH 2" ROUND AND 1.25" SQUARE PIPE INSIDE AS NOTED BY TLUSTY. SEARCHED FOR ALL BEARING TREE REMAINS PER HISTORICAL NOTES AND FOUND OLD STUMP REMAINS TO NORTH. USED ALL PHYSICAL EVIDENCE IN FIELD AS WELL AS THE DISTANCES FROM OLD NOTES FROM THE SOUTH 1/4 CORNER OF SECTION 10 AND WEST 1/4 CORNER OF SECTION 14 FROM HUTCHINSON NOTES AND SET A 1.00" O.D. ALUMINUM PIPE WITH COUNTY CAP AT LOCATION THAT BEST FIT ALL ABOVE EVIDENCE, SET 4 NEW TIES AND RE-TIED CORNER.



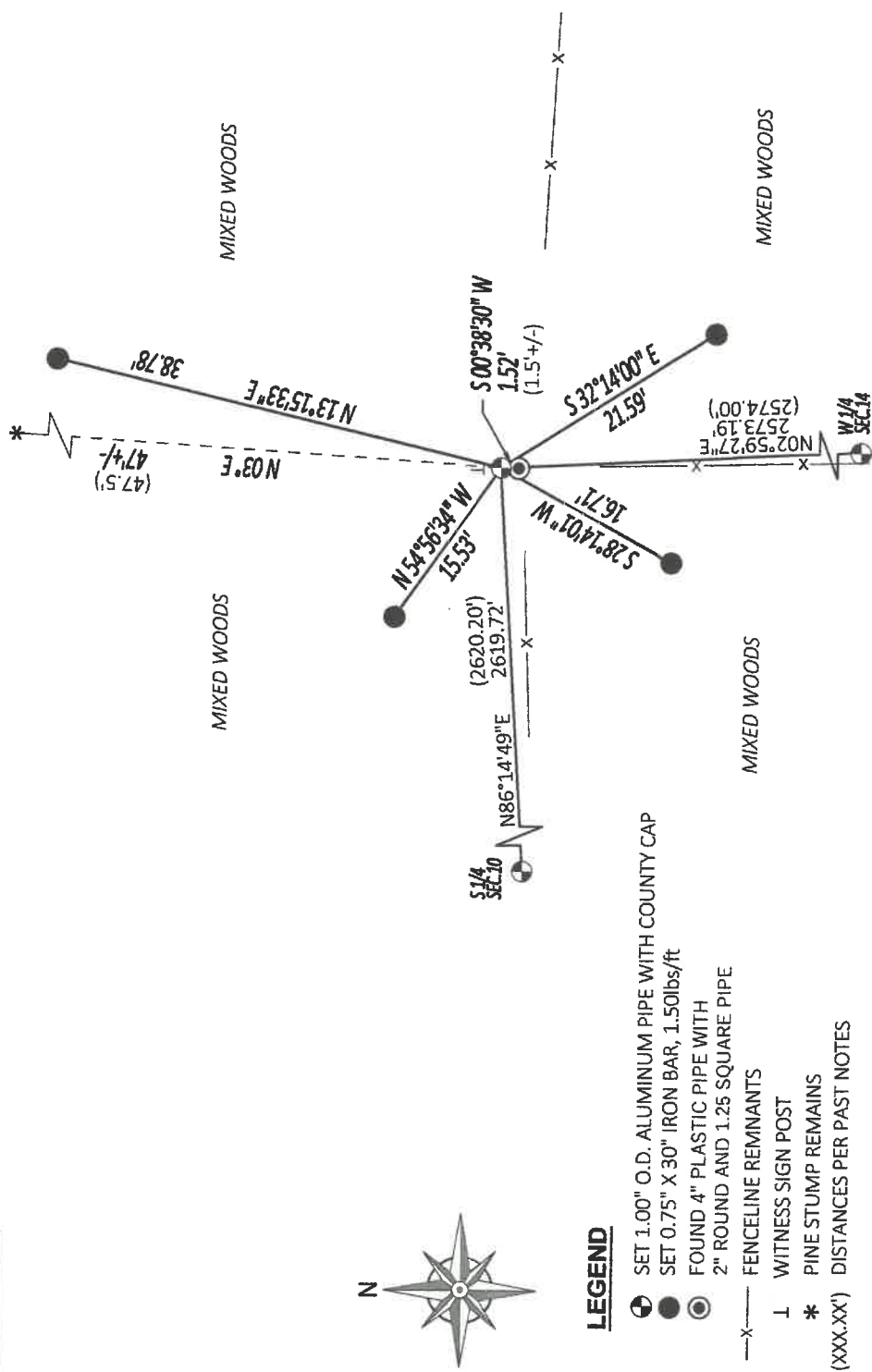
SEAL:

DATA SHOWN HERE ON THIS TIE SHEET IS CORRECT AND COMPLETE TO THE BEST OF MY KNOWLEDGE AND BELIEF

SIGNATURE: Timothy G. Rutzen

DATE: 9-6-22

## PLAN VIEW



## LEGEND

- ☉ SET 1.00" O.D. ALUMINUM PIPE WITH COUNTY CAP
- SET 0.75" X 30" IRON BAR, 1.50lbs/ft
- FOUND 4" PLASTIC PIPE WITH 2" ROUND AND 1.25 SQUARE PIPE
- x— FENCELINE REMNANTS
- I WITNESS SIGN POST
- \* PINE STUMP REMAINS
- (XXX.XX) DISTANCES PER PAST NOTES