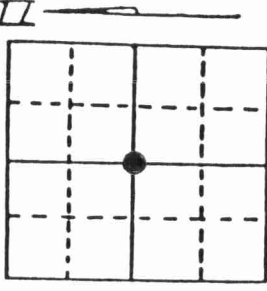


# U.S. PUBLIC LAND SURVEY MONUMENT RECORD

Note: This form is intended and designed to fulfill all requirements of Wisconsin Administrative Code, Chapter A-E 7.08 U.S. Public Land Survey Monument Record (3) (a) (b) (c) (d) (e) (f) (g) (h) (i). An additional sheet may be added if necessary to conform with said requirements.

(a) Corner location: Township 31 North Range 10 East/West 43110092020



Town/City/Village Ackley

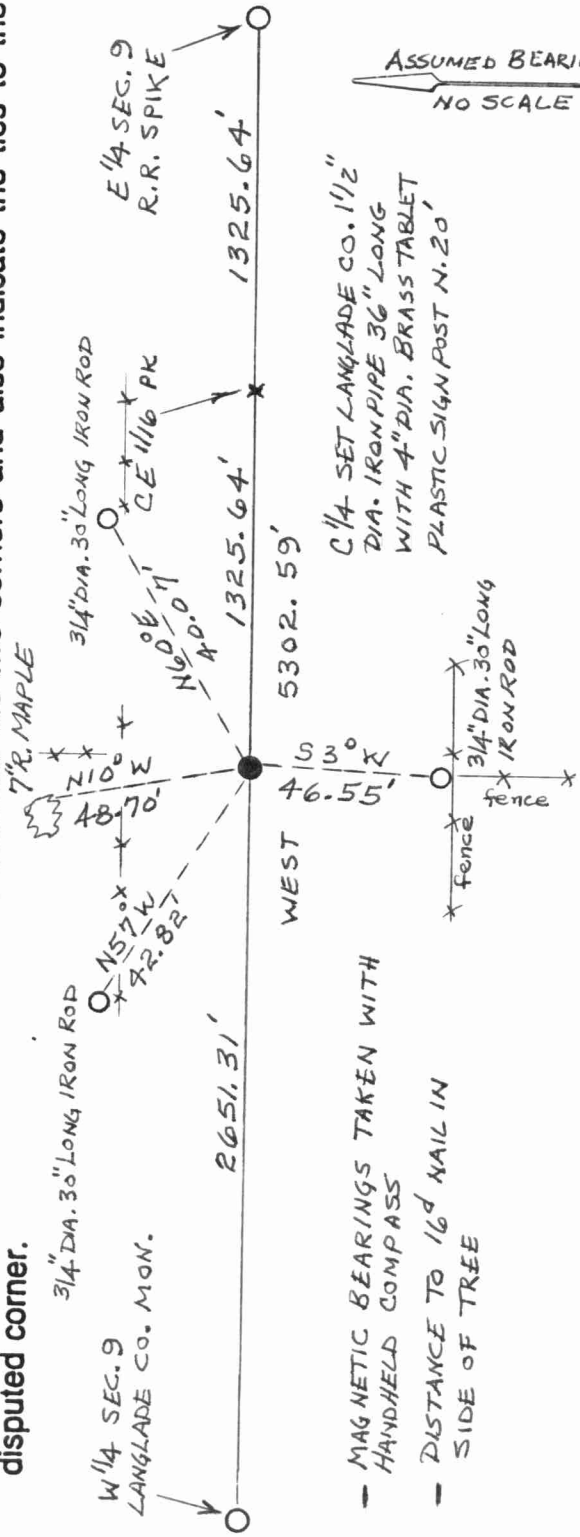
County Langlade

Section 9

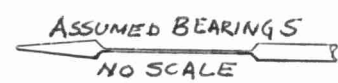
(b) (f) (g) (h) Description of monument found at this corner and if it was accepted, state all evidence (material, testimonial, occupational, plats, records, other monuments) used as a basis for accepting. If not accepted or if nothing was found, state evidence used as basis for establishing location. If reestablished through lost corner proportionate methods, indicate all monuments, distances and directions used to establish. Indicate type of monument found or set and sign post.

- 1919 Webley west from E 1/4 40.11 C 1/4 set by Dorr  
Set new stake cedar post; 20.05 1/2 set 1/8 pump point 1 1/4" by 2"
- 1995 Establish C 1/4 on line with W 1/4 and E 1/4 and doubling distance through CE 1/16.

(c) (d) (e) Plan view of corner with ties to at least 4 witness monuments. If in disagreement with previously established corner, show the distances between the two corners and also indicate the ties to the disputed corner.



- MAGNETIC BEARINGS TAKEN WITH HANDHELD COMPASS
- DISTANCE TO 16<sup>d</sup> NAIL IN SIDE OF TREE

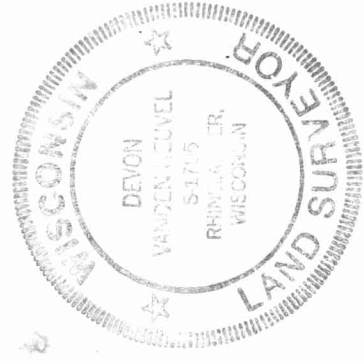


(i) I. DEVON VANDEN HEUVEL  
 (type or print name) certify that the corner location on this record was determined by me or under my direction and control and that this U.S. Public Land Survey Monument Record is correct and complete to the best of my knowledge and belief.

I. Devon Vanden Heuvel 4-3-95

Signature

Date



Index No. G11

Stamp