

CERTIFIED LAND CORNER RESTORATION

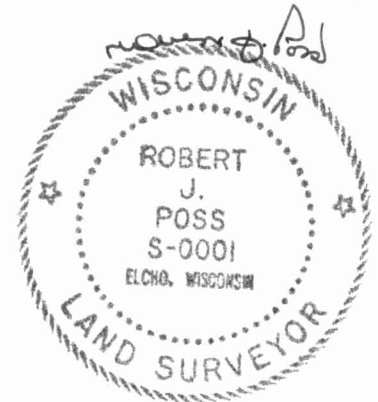
31-10

Index No. G-7

State of Wisconsin }  
 County of LANGLADE, } ss.

I ROBERT J. POSS, do hereby certify that on the 12<sup>TH</sup> day of JULY, 1969, I found evidence of the CENTER SEC. corner of SECTION 8 Township 31, North, Range 10 EAST, Fourth, Principal Meridian, as described hereon; and that from this evidence I established a new monument and accessories as described hereon to perpetuate the original location of this corner.

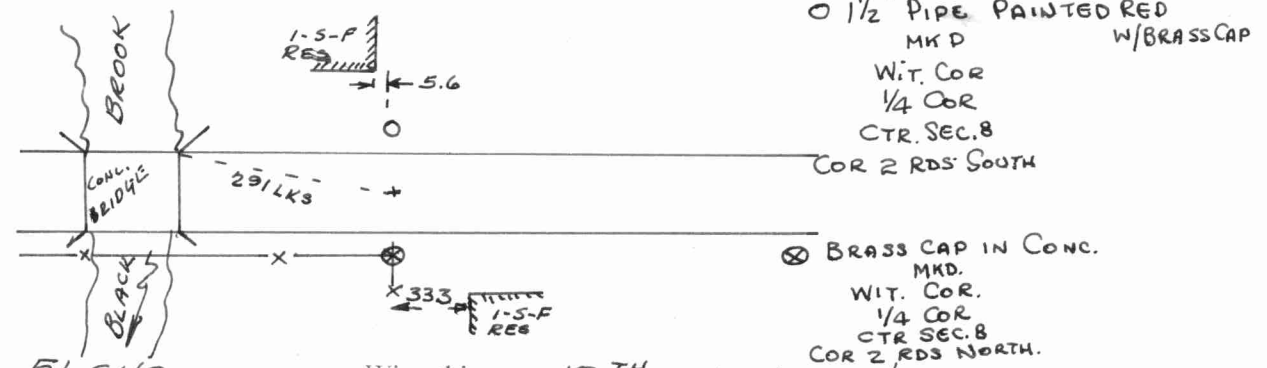
Resident witnesses:  
 \_\_\_\_\_  
 \_\_\_\_\_  
 \_\_\_\_\_



Description of corner evidence found:

CORNER IS IRON PIPE UNDER 3 1/2 FT. OF ROAD MATERIAL HUTCHINSON REFERENCE TO NORTH CONCRETE ABUTMENT 586 W 291 LKS. CHECKS! (No. ABT. BLACK BROOK BRIDGE)

Description of monument and accessories I established to perpetuate the original location of this corner.

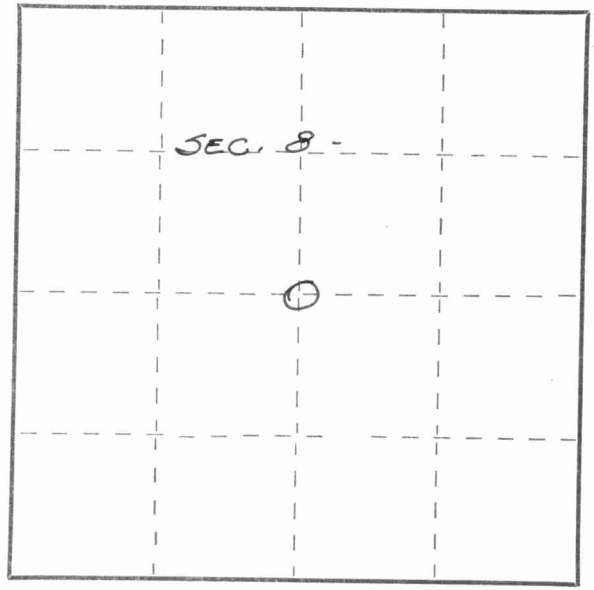


Dated at ELCHO, Wis., this 12<sup>TH</sup> day of JULY, 1969.

Signature Robert J. Poss Title REG. LAND SURVEYOR Registration No. S-0001  
 (County Surveyor, Registered Land Surveyor, or other duly authorized official)

Office of Register of Deeds, County of \_\_\_\_\_, I hereby certify that the within instrument was filed in this office for record on the \_\_\_\_\_ day of \_\_\_\_\_, 19\_\_\_\_ at \_\_\_\_\_ o'clock \_\_\_\_\_ M.

\_\_\_\_\_  
 (Register of Deeds)  
 By \_\_\_\_\_ Deputy



○ = Corner monument restored.

FORM 985 H. C. MILLER CO., MILWAUKEE

4311008000