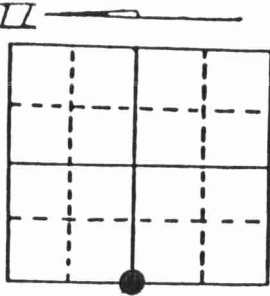


U.S. PUBLIC LAND SURVEY MONUMENT RECORD

Note: This form is intended and designed to fulfill all requirements of Wisconsin Administrative Code, Chapter A-E 7.08 U.S. Public Land Survey Monument Record (3) (a) (b) (c) (d) (e) (f) (g) (h) (i). An additional sheet may be added if necessary to conform with said requirements.

(a) Corner location: Township 31 North Range 10 East West Links 4310092000



Town/City/Village Ackley County Langlade Section 9

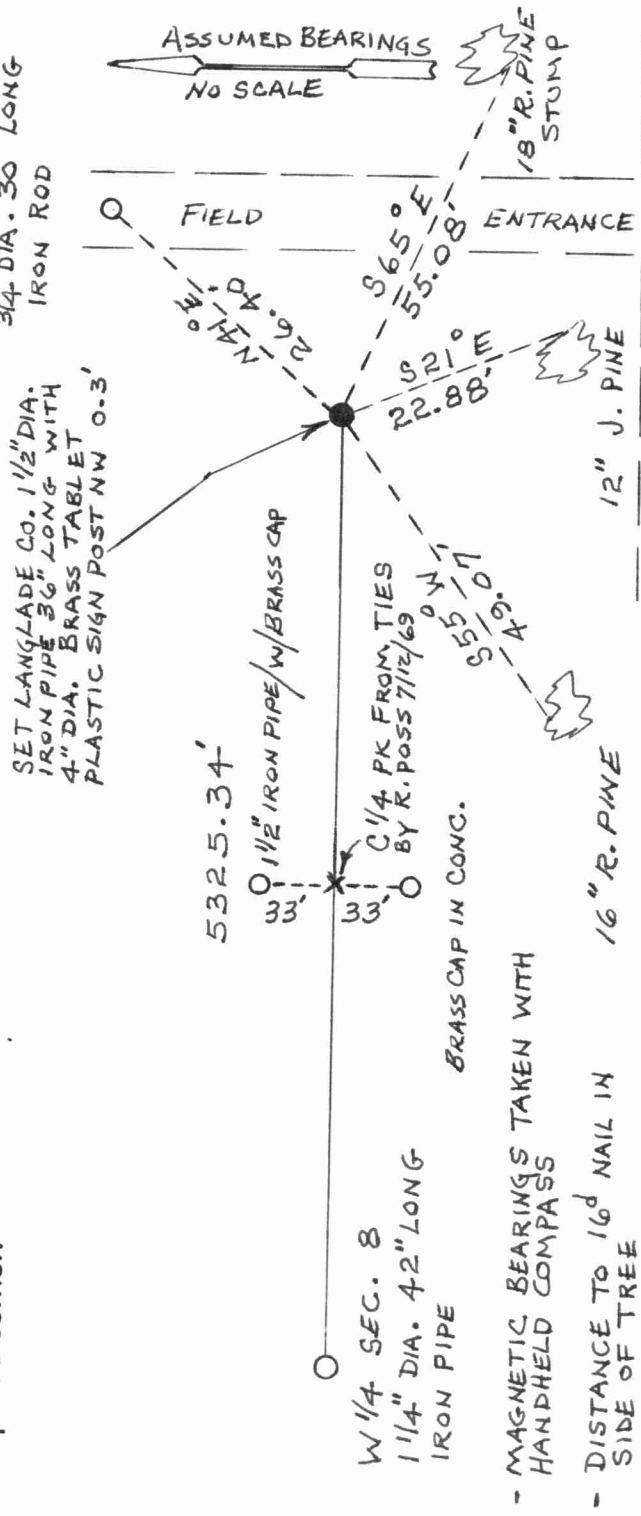
(b) (f) (g) (h) Description of monument found at this corner and if it was accepted, state all evidence (material, testimonial, occupational, plats, records, other monuments) used as a basis for accepting. If not accepted or if nothing was found, state evidence used as basis for establishing location. If reestablished through lost corner proportionate methods, indicate all monuments, distances and directions used to establish. Indicate type of monument found or set and sign post.

-1860 Hiram C. Fellows established original corner.... Set 1/4 Post B.T.s Spruce 7 S5E 66 Links; Tamarack 10 N31W 23 Links

-1922 Malcolm Hutchinson reset equal distance between NW and SW section corners.

-1994 I find no evidence of corner. Establish corner as shown on plan view. Set Langlade Co. 1 1/2" Dia. Iron pipe 36" Long with 4" dia. brass tablet.

(c) (d) (e) Plan view of corner with ties to at least 4 witness monuments. If in disagreement with previously established corner, show the distances between the two corners and also indicate the ties to the disputed corner.



(i) I, DEVON VAUDED HEUVEL (type or print name) certify that the corner location on this record was determined by me or under my direction and control and that this U.S. Public Land Survey Monument Record is correct and complete to the best of my knowledge and belief.

Signature Devon VauDED Heuvel Date 4-2-95



Index No. G9

Stamp