

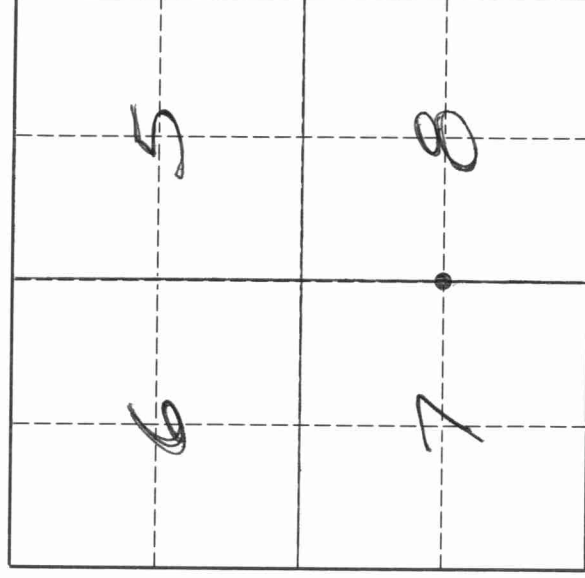
43110078000

# U. S. PUBLIC LAND SURVEY MONUMENT RECORD

## INSTRUCTIONS:

This record shall show the location of the corner and shall include all of the following nine elements (a through i).

- (a) Identify the corner by reference to the U.S. public land survey system.
- = Corner monument restored.



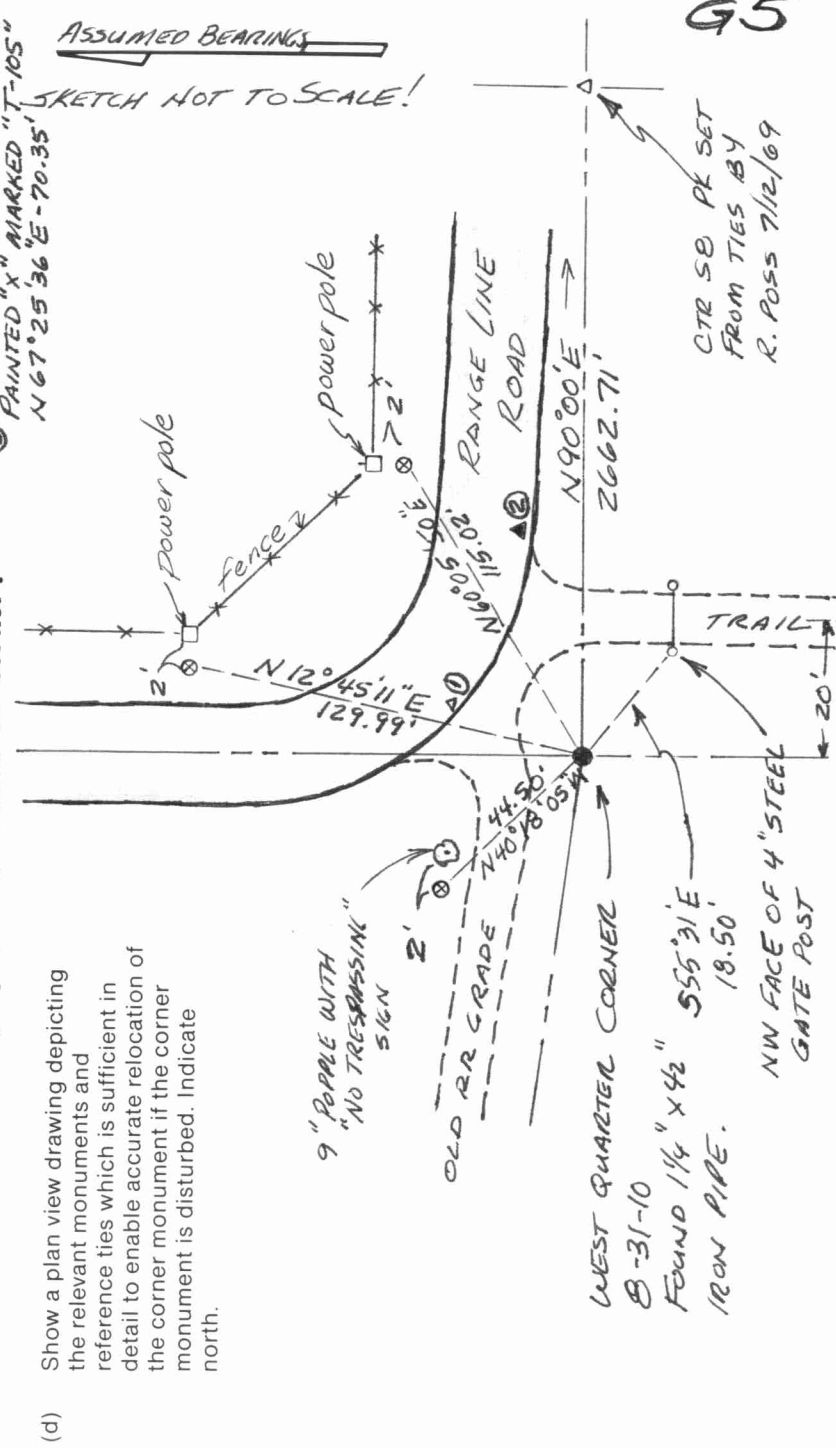
T. 31 N., R. 10 E.

The West Quarter corner of Section 8, Township 31 North, Range 10 East, Langlade County, Wisconsin.

- (b) Describe any record evidence, monument evidence, occupational evidence, testimonial evidence or any other material evidence you considered, and whether the monument was found or placed.  
 The original corner was established in 1860 by H.C. Fellows. Original BT's: fir, 7", S08°W, 27 lks., and a fir, 8", N65°E, 17 lks. In 1889, B.F. Dorr (FB97-3) measured 2671.7' to the center of Section 8. In 1922, Hutchinson measured 2696.1' from this corner to the section corner to the north, and he measured 2660.13' from this corner to the center of Section 8. In 1923, Hutchinson measured 2696.76' from this corner to the section corner to the north. On 12/06/94, D. Tlusty and Dennis Roberts searched at a location based on Hutchinsons measurements and found a 1 1/4" x 42" iron pipe, top of which was approximately 15" below the water level in a ditch. Top part of pipe was bent, probably from ditch clearing in the past. It appeared that the bottom 17" of the pipe was straight and upright in the ground. Measured temporary ties, removed pipe found and filled the area. (con't. over)

- (c) In the plan view drawing below, provide reference ties to at least 4 witness monuments, or, if the location is within a municipality, to at least 2 witness monuments. (Witness monuments shall be made of concrete, natural stone, iron or other equally durable material.)  
 Describe witness monuments.  
 ⊗ = 3/4" x 30" re-bar with red plastic cap set flush  
 Set white vinyl sign post 0.7' south of corner. FB 6-140

ADDITIONAL TIES:  
 ① PK SET IN PAVT. N25°26'46"E-56.7'  
 ② PK FOUND @ CENTER OF 36" WHITE PAINTED "X" MARKED "T-105" N 67°25'36"E-70.35'



ASSUMED BEARINGS  
 SKETCH NOT TO SCALE!

CTR SE PK SET FROM TIES BY R. POSS 7/12/69

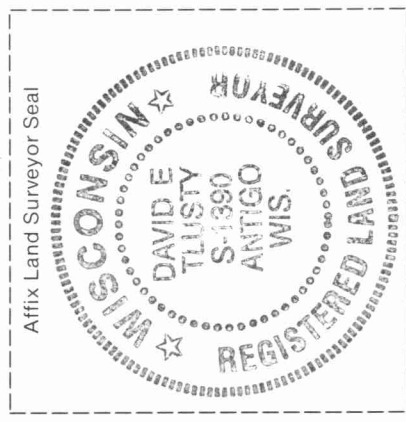
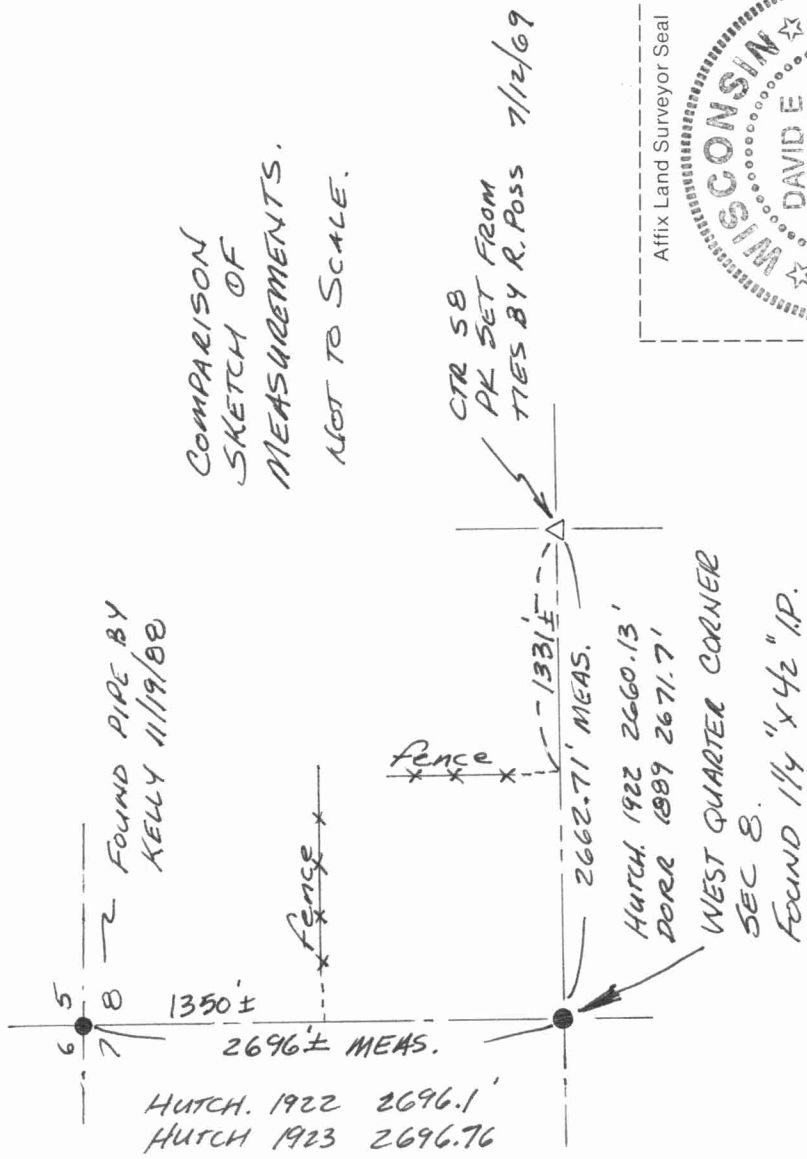
WEST QUARTER CORNER B-31-10 FOUND 1 1/4" x 42" IRON PIPE. 555'± E 18.50' NW FACE OF 4" STEEL GATE POST

4310072000

Describe any material discrepancy between the location of the corner as restored or reestablished and the location of that corner as previously restored or reestablished by distance and direction. Show the discrepancy on the plan view drawing under (d), above. Show the distances between the corner as previously restored or reestablished and (1) the corner as restored or reestablished, and (2) to at least 2 of the witness monuments shown on the drawing in (d), above.  
No discrepancy.

- (f) Was the corner restored through acceptance of (1) an obliterated evidence location, or, (2) a found perpetuated location?  
A found perpetuated location.

(g & h) Was the corner reestablished through lost corner proportionate methods? If so, show the method, including the directions and distances to other public land survey corners used as evidence or used for proportioning in determining the corner location.  
(con't. from front side)  
Re-set a 3/4" x 30" iron rod and measured ties as shown on the front side of this form. Also dug with backhoe at CL-CL point and found nothing. Measured to section corner to north and center of section to the east and accepted location of iron pipe found as the location used by Hutchinson in 1922 & 1923, and as the best evidence of the original corner location.



(i) I, David E. Tlusty, Langlade County Surveyor,  
(type or print name)

certify that the corner location shown on this record was determined by me or under my direction and control and that this U.S. Public Land Survey Monument Record is correct and complete to the best of my knowledge and belief.

David E. Tlusty 12/7/94  
Signature Date