

431100000000

U.S. PUBLIC LAND SURVEY MONUMENT RECORD

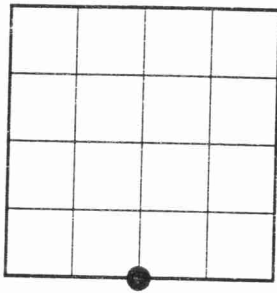
NOTE: This form is intended and designed to fulfill all requirements of Wisconsin Administrative Code, Chapter A-E 7.08 U.S. Public Land Survey Monument Record (3)(a)(b)(c)(d)(e)(f)(g)(h)(i). An additional sheet may be added if necessary to conform with said requirements.

(a) Corner location: Township 31 North

Range 10 East

Town of ACKLEY

LANGLADE County, Wisconsin



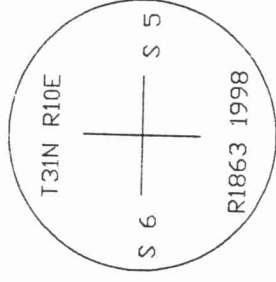
Section 5

(b)(f)(g)(h) Description of monument found at this corner and if it was accepted, state all evidence (material, testimonial, occupational, plats, records, other monuments) used as a basis for accepting. If not accepted or if nothing was found, state evidence used as basis for establishing location. If reestablished through lost corner proportionate methods, indicate all monuments, distances and directions used to establish. Indicate type of monument found or set and sign post.

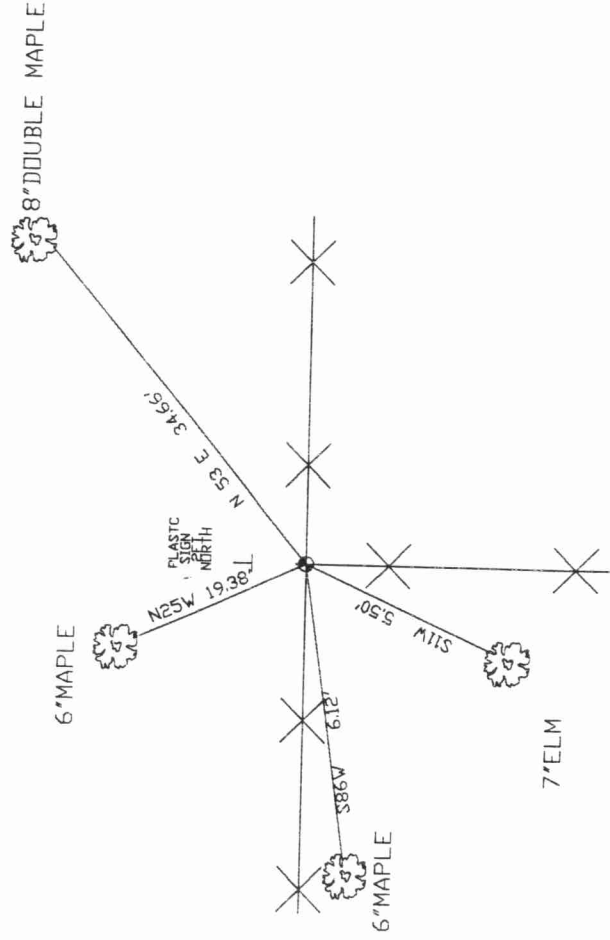
-1860-HARRY C. FELLOWS ESTABLISHED ORIGINAL CORNER, SET WOOD POST AND MADE B.T.'S, MAPLE 10" S43E 6LKS., BIRCH 8" N65W 22LKS.

-1922-MALCOLM HUTCHINSON SET CORNER.

-1998-I FOUND A 1 1/2" DIA. IRON PIPE WITH DRIVING CAP AND AN OLD POINTED POST IN INTERSECTION OF A FENCE LINE RUNNING EAST-WEST AND A FENCE LINE RUNNING SOUTH. I RESET THE CORNER WITH A 2"X30" GALVANIZED LANGLADE COUNTY MONUMENT WITH A FLARED BOTTOM AND A 3" DIAMETER BRASS CAP STAMPED AS SHOWN. ROCKS HAVE BEEN PILED AROUND THE MONUMENT.



(c)(d)(e) Plan view of corner with ties to at least 4 witness monuments. If in disagreement with previously established corner, show the distances between the two corners and also indicate the ties to the disputed corner.



(i) I, Devon Vanden Heuvel, Registered Land Surveyor #S-1795, hereby certify that the corner location on this record was determined by me or under my direction and control and that this U.S. Public Land Survey Monument Record is correct and complete to the best of my knowledge and belief.

Devon Vanden Heuvel
Signature

10-31-98

Date

Index No. C5

