

U.S. PUBLIC LAND SURVEY MONUMENT RECORD

(Prepared and as required by S. A-E 7.08 WI Administrative Code)

The SOUTH QUARTER corner of Section 6, T. 31 N., R. 10 E., Langlade County, WI

Corner was: (check all that apply)

- Restored through acceptance of an obliterated evidence location.
- Restored through acceptance of a found perpetuated location.
- Determined to be lost and re-established through proportionate methods.
(Show bearings and distances to PLSS corners used for proportioning.)
- Restored/recovered/reestablished in a location that differs from a previously established position. (Show difference in plan view below.)

43110060020

- Check here if additional information is shown on the reverse side of this form.

Describe record evidence, recovered physical evidence, occupational evidence, testimonial evidence and all other evidence considered in the recovery/restoration of the corner.

The original corner was established in 1860 by Hiram C. Fellows. Original bearing trees: tamarac, 12", S65°E, 11 lks. and a tamarac, 8", N17°W, 26 lks. I find no subsequent record evidence of this corner. I re-set this corner on the centerline of Rangeline Road, and in line with an old fence to the South. Fence south is now all down. This fence had been in this location since at least 1941, as verified by local landowner, Jerry Mendl whose grandparents bought the NW-NE in 1941. A 1938 aerial photograph indicates an obvious field/woods line here, and also shows field/woods lines in Section 6 pointing to this location. For the corner, I set a railroad spike and measured ties shown below. See discussion on H. C. Fellows on reverse side.

Physical description of the monument set:

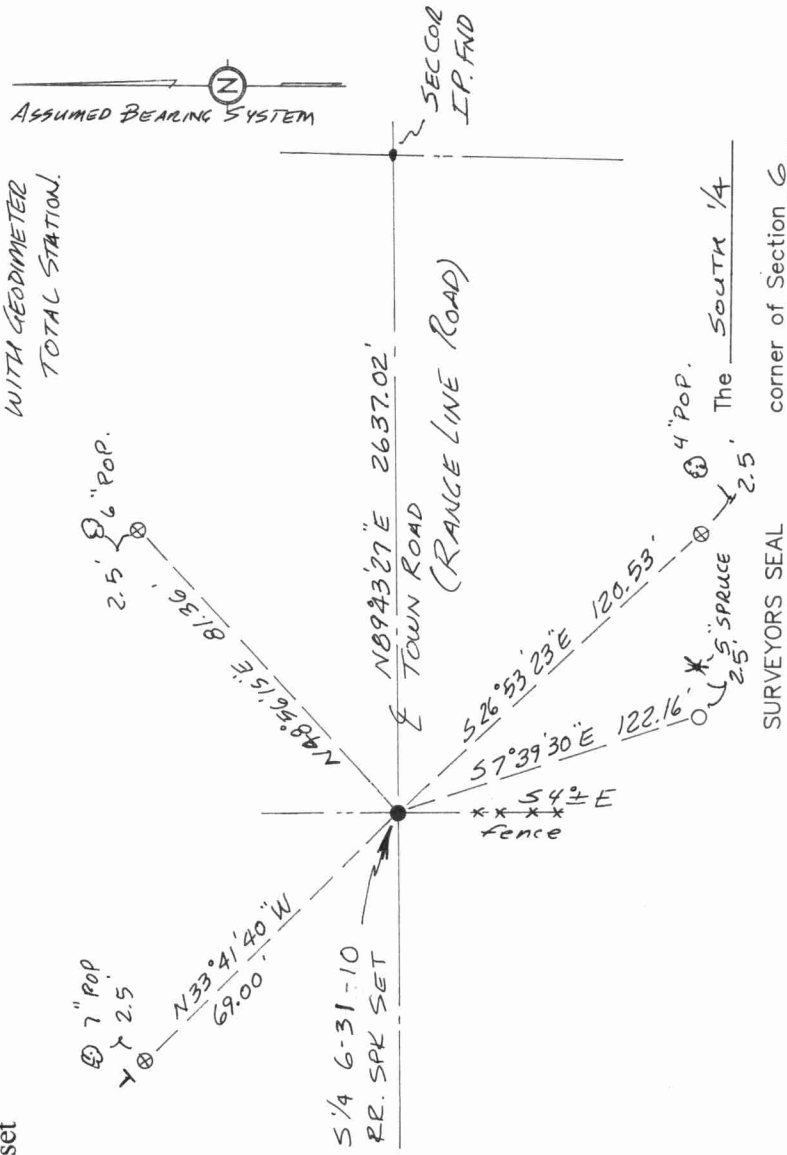
For the corner, I set a railroad spike in the center of Rangeline Road.

Describe the accessories used to perpetuate the location of the corner. Include a plan view drawing and indicate accessories found/set. Describe measuring point on bearing trees. Show any topographic features that would aid in future recovery of the corner.

- ⊗ = 3/4" x 30" rebar set flush with ground
- = 1" x 30" iron pipe set flush with ground
- ⋈ = white vinyl sign post set

Notes FB7-117

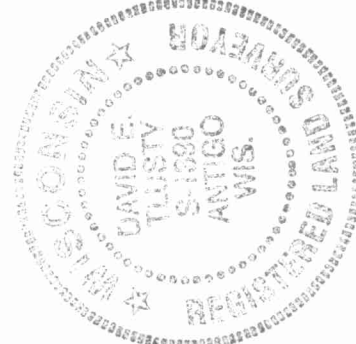
TIES MEASURED
WITH GEDDIMETER
TOTAL STATION.



SURVEYORS SEAL

corner of Section 6

T. 31 N., R. 10 E.
Langlade County, WI



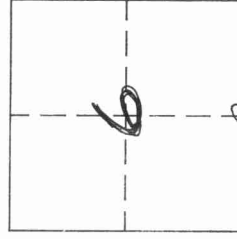
I, DAVID E. TLUSTÝ, LANGLADE COUNTY SURVEYOR, certify that the corner location shown on this record was determined by me or under my direction and control and that this U.S. Public Land Survey Monument Record is correct and complete to the best of my knowledge and belief.

David E. Tlustý
4/12/19

Signature

Date

INDEX No. E3



○ = Location of corner