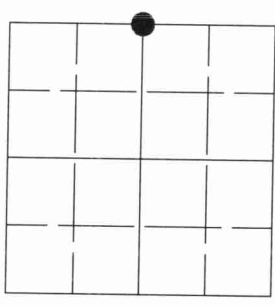


43110052000

U.S. PUBLIC LAND SURVEY MONUMENT RECORD

NOTE: This form is intended and designed to fulfill all requirements of Wisconsin Administrative Code, Chapter A-E 7.08 U.S. Public Land Survey Monument Record (3)(a)(b)(c)(d)(e)(f)(g)(h)(i). An additional sheet may be added if necessary to conform with said requirements.



Section 5

(a) Corner location: Township 31 North

Range 10 East

Town of ACKLEY

LANGLADE County, Wisconsin

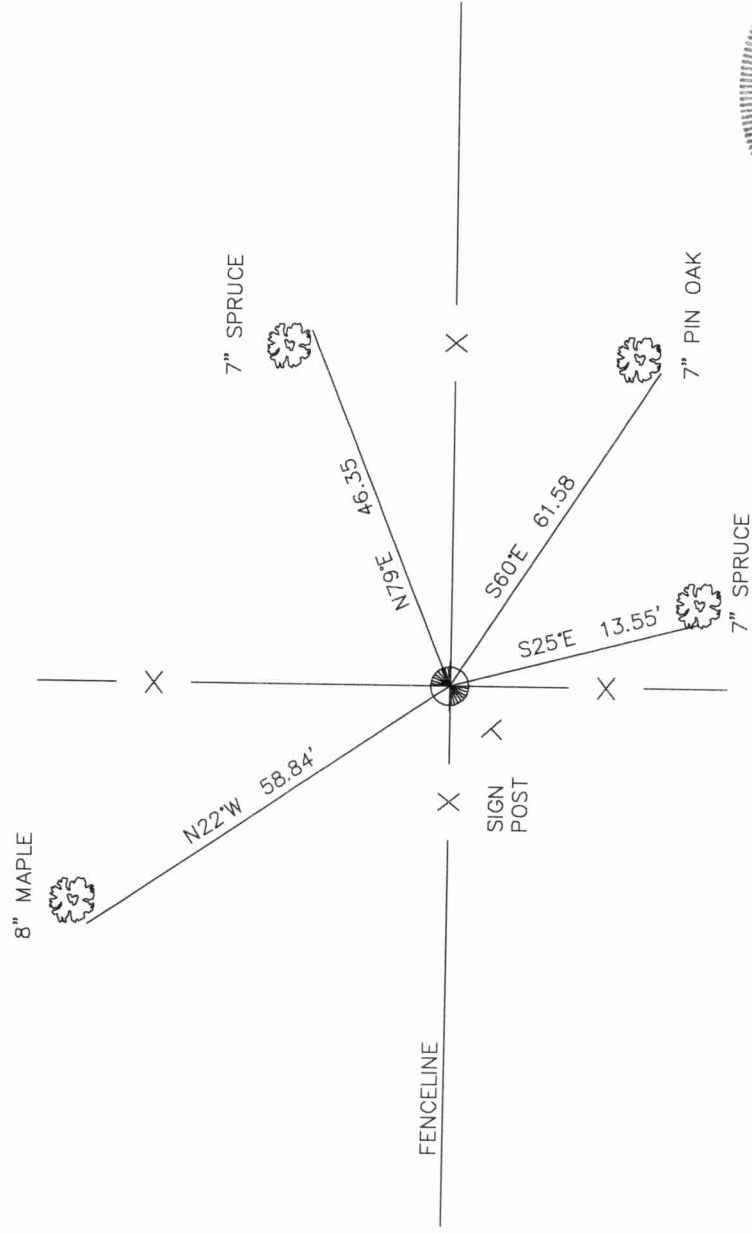
(b)(f)(g)(h) Description of monument found at this corner and if it was accepted, state all evidence (material, testimonial, occupational, plats, records, other monuments) used as a basis for accepting. If not accepted or if nothing was found, state evidence used as basis for establishing location. If reestablished through lost corner proportionate methods, indicate all monuments, distances and directions used to establish. Indicate type of monument found or set and sign post.

-1860- HARRY C. FELLOWS ESTABLISHED ORIGINAL CORNER, SET WOOD POST AND MADE BT'S. MAPLE 12", S38W, 12lks; BIRCH 6", N65E, 10lks

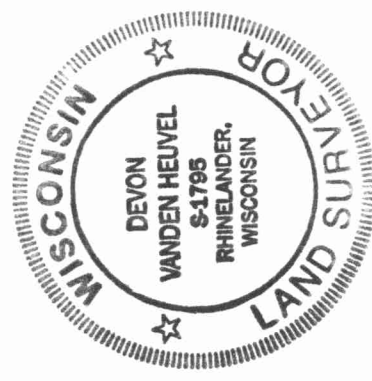
-1902- DORR PERFORMED SURVEY IN SECTION 4, DORR REFERS TO THE WEST 1/4 OF 4 AS BEING IN BUT DOES NOT NOTE WHAT WAS FOUND.

-1998- I FOUND NO EVIDENCE OF THE CORNER. OLD DIMENSIONS TO CORNERS TO THE EAST AND THE WEST DO NOT FIT. I ACCEPTED THE INTERSECTION OF THE VERY OLD FENCE LINES AS BEING THE BEST EVIDENCE AS TO THE LOCATION OF THE CORNER AND HAVE MONUMENTED THE LOCATION. THE LOCATION IS MONUMENTED WITH A 2" DIAMETER GALVANIZED IRON PIPE 30" LONG WITH A FLARED BOTTOM. THE PIPE IS CAPPED WITH A 3" DIAMETER BRASS CAP STAMPED AS SHOWN BELOW. ROCKS HAVE BEEN PILED AROUND THE MONUMENT.

(c)(d)(e) Plan view of corner with ties to at least 4 witness monuments. If in disagreement with previously established corner, show the distances between the two corners and also indicate the ties to the disputed corner.



(i) I, Devon Vanden Heuvel, Registered Land Surveyor #S-1795, hereby certify that the corner location on this record was determined by me or under my direction and control and that this U.S. Public Land Survey Monument Record is correct and complete to the best of my knowledge and belief.



Devon Vanden Heuvel 10-31-98

Signature

Date

C 9