

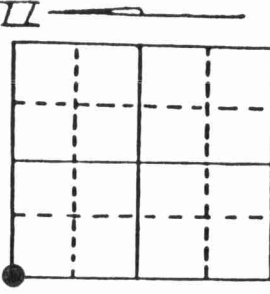
4311065000

U.S. PUBLIC LAND SURVEY MONUMENT RECORD

Note: This form is intended and designed to fulfill all requirements of Wisconsin Administrative Code, Chapter A-E 7.08 U.S. Public Land Survey Monument Record (3) (a) (b) (c) (d) (e) (f) (g) (h) (i). An additional sheet may be added if necessary to conform with said requirements.

(a) Corner location: Township 31 North

Range 10 East/West



Section 9

Town/City/Village Ackley

County Langlade

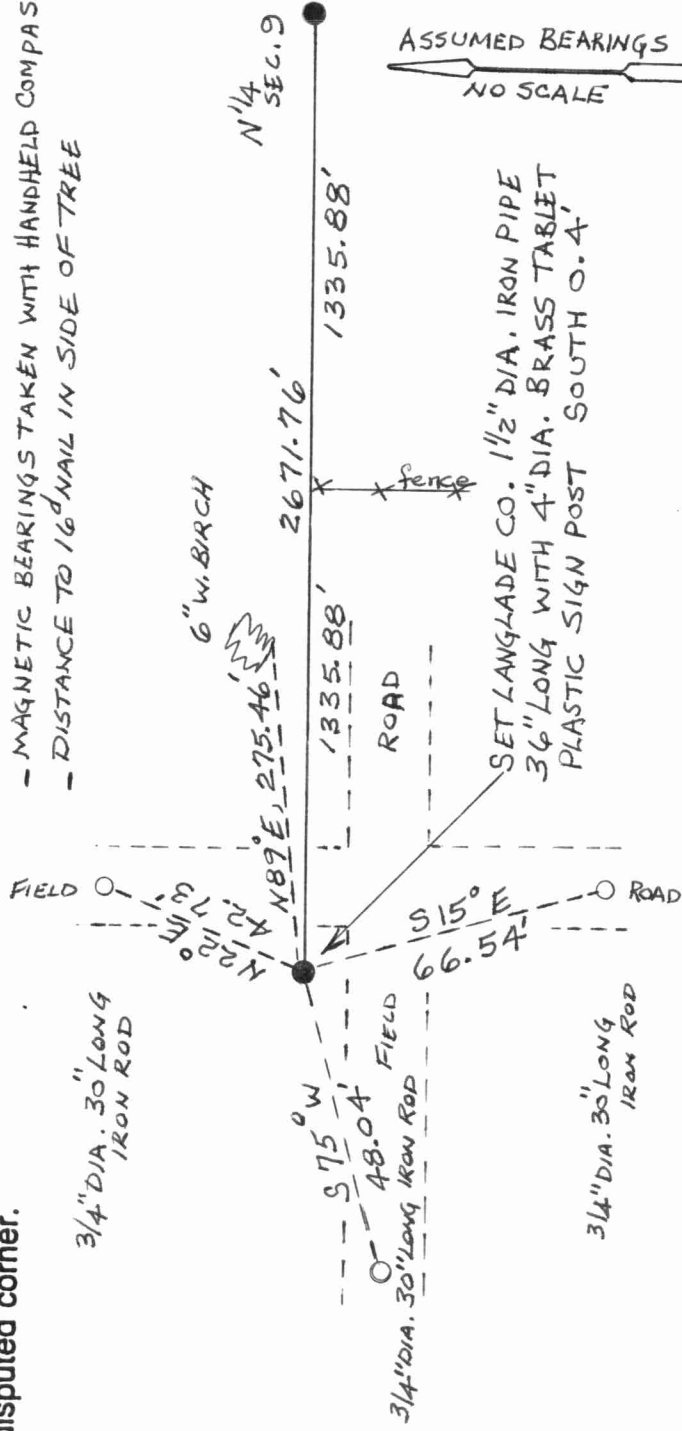
(b) (f) (g) (h) Description of monument found at this corner and if it was accepted, state all evidence (material, testimonial, occupational, plats, records, other monuments) used as a basis for accepting. If not accepted or if nothing was found, state evidence used as basis for establishing location. If reestablished through lost corner proportionate methods, indicate all monuments, distances and directions used to establish. Indicate type of monument found or set and sign post.

-1860 Hiram C. Fellows established original corner Set post to secs. 4,5,8,& 9.
B.T.s Tamarack 6 S32W 13 Links; Tamarack 5 N50E 27 Links

-1931 Webley Drove Pump Point 1 1/4" X 2 1/2'.

-1994 I find no evidence. Establish corner as shown in plan view. Set Langlade Co.
1 1/2" Dia. iron pipe 36" long eith 4" dia. brass tablet.

(c) (d) (e) Plan view of corner with ties to at least 4 witness monuments. If in disagreement with previously established corner, show the distances between the two corners and also indicate the ties to the disputed corner.



Index No. E 9



(i) I, DEVON VANDEN HEUVEL
(type or print name) certify that the corner location on this record was determined by me or under my direction and control and that this U.S. Public Land Survey Monument Record is correct and complete to the best of my knowledge and belief.

Devon Vanden Heuvel
Signature

Date

Stamp