

LANGLADE COUNTY U.S. PUBLIC LAND CORNER RESTORATION

The East Quarter corner of Section 4, T. 31 N., R. 10 E., Langlade County, WI.

Corner was: (check all that apply)

- Restored through acceptance of an obliterated evidence location.
- Restored through acceptance of a found perpetuated location.
- Determined to be lost and re-established through proportionate methods.
- Show bearings and distances to PLSS corners used for proportioning, and show original distances).
- Restored/recovered/re-established in a location that differs from a previously established position.
- Check here if additional information is shown on the reverse side of this form.

4311004 2000

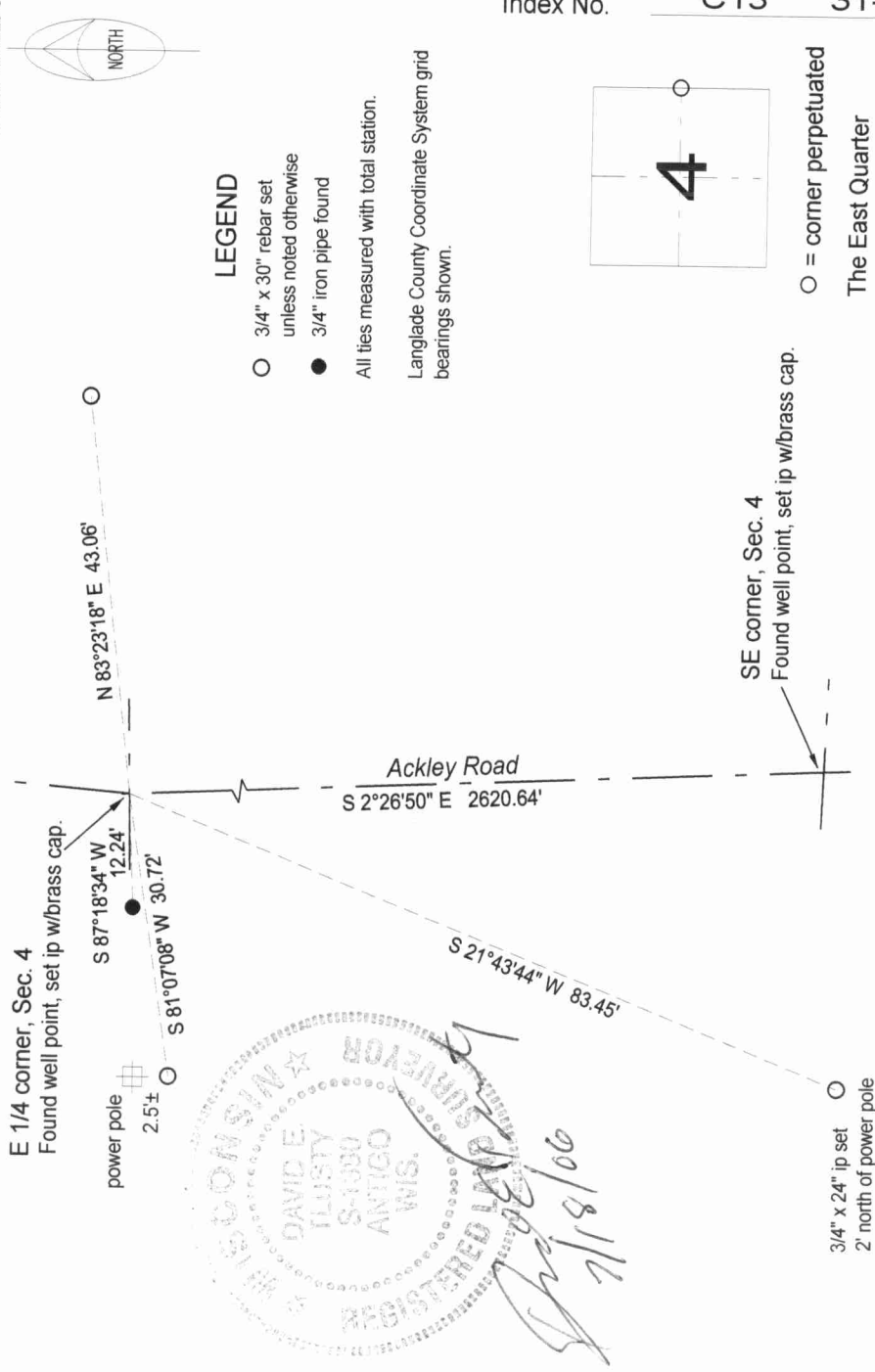
Describe record evidence, recovered physical evidence, occupational evidence, testimonial evidence and all other evidence considered in the recovery/restoration of the corner.

The original corner was established in 1860 by Hiram Fellows. Original bearing trees: hemlock, 12", S63°W, 18 links and a hemlock, 10", N24°E, 10 links. In 1884, B.F. Dorr measured the E-W 1/4 line of Sec. 3 but didn't describe this corner. In 1904, Webley subdivided Sec. 3 but didn't describe this corner. In 1988, former surveyor Kelly "located rod 18" below road surface called for in Hutchinsons notes. Set 1" ip over rod". 08/01/03 I found Kellys pipe just below the new pavement. Down 1.5' I found a 3/8" bent rod. Down 1.9' I found the bottom portion of a well point. I don't have Hutchinsons notes mentioned by Kelly but know that Hutchinson used many well points in his work. I accepted the well point as the best evidence of the corner location and set a new 2" x 23" new iron pipe with brass cap directly over it.

Physical description of the monument set:

I topped the found well point with a new 2" x 23" galvanized, flared bottom pipe with brass cap set flush with road surface.

Describe the accessories used to perpetuate the corner. Include a plan view drawing and accessories found/set. Describe measuring point on bearing trees. Show any topographic features that would aid in future recovery of the corner.

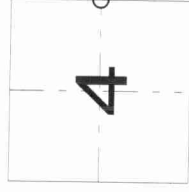


LEGEND

- 3/4" x 30" rebar set unless noted otherwise
- 3/4" iron pipe found

All ties measured with total station.

Langlade County Coordinate System grid bearings shown.



Index No. C13 31-10

○ = corner perpetuated

The East Quarter corner of Section 4, T. 31 N., R. 10 E., Langlade County, WI

SE corner, Sec. 4
Found well point, set ip w/brass cap.

3/4" x 24" ip set
2' north of power pole



I, David E. Tusty, Registered Land Surveyor, as Langlade County Surveyor, certify that the corner location on this record was determined by me and that this U.S. Public Land Survey Monument Record is correct to the best of my knowledge and belief.

Field book: FB20-8





431004000

U. S. PUBLIC LAND SURVEY MONUMENT RECORD

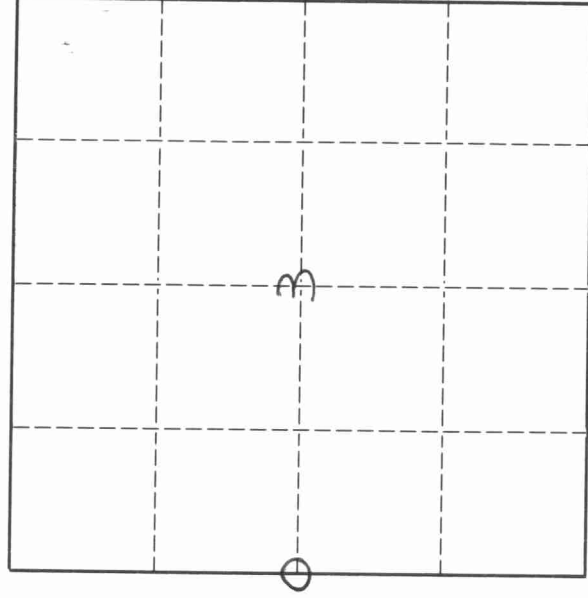
INSTRUCTIONS:

This record shall show the location of the corner and shall include all of the following nine elements (a through i).

- (a) Identify the corner by reference to the U.S. public land survey system.
O = Corner monument restored.

ORIGINAL CORNER ESTABLISHED BY H.C. FELLOWS IN AUGUST 1860

CORNER PERPETUATED BY M. HUTCHINSON IN 1920'S

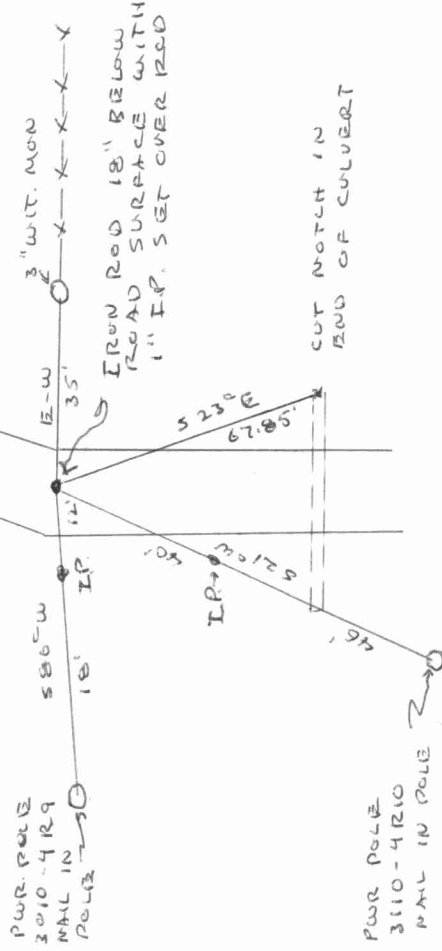


T 31 N R 10 E

- (b) Describe any record evidence, monument evidence, occupational evidence, testimonial evidence or any other material evidence you considered, and whether the monument was found or placed.

LOCATED IRON ROD 18" BELOW ROAD SURFACE CALLED FOR IN HUTCHINSON'S NOTES. SET 1" I.P. OVER ROD

- (c) In the plan view drawing below, provide reference ties to at least 4 witness monuments, or, if the location is within a municipality, to at least 2 witness monuments. (Witness monuments shall be made of concrete, natural stone, iron or other equally durable material.) Describe witness monuments.



C-13

43110042000

Describe any material discrepancy between the location of the corner as restored or reestablished and the location of that corner as previously restored or reestablished by distance and direction. Show the discrepancy on the plan view drawing under (d), above. Show the distances between the corner as previously restored or reestablished and (1) the corner as restored or reestablished, and (2) to at least 2 of the witness monuments shown on the drawing in (d), above.

None

(f) Was the corner restored through acceptance of (1) an obliterated evidence location, or, (2) a found perpetuated location.?

(2)

(g & h) Was the corner reestablished through lost corner proportionate methods? If so, show the method, including the directions and distances to other public land survey corners used as evidence or used for proportioning in determining the corner location.

None



(i) I, WILLIAM F. KELLY (type or print name)

certify that the corner location shown on this record was determined by me or under my direction and control and that this U.S. Public Land Survey Monument Record is correct and complete to the best of my knowledge and belief.

Signature William F. Kelly Date 11-19-88