

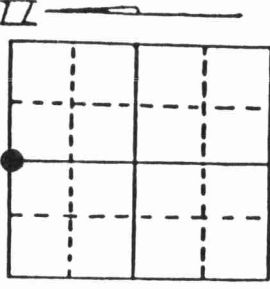
43110040000

U.S. PUBLIC LAND SURVEY MONUMENT RECORD

Note: This form is intended and designed to fulfill all requirements of Wisconsin Administrative Code, Chapter A-E 7.08 U.S. Public Land Survey Monument Record (3) (a) (b) (c) (d) (e) (f) (g) (h) (i). An additional sheet may be added if necessary to conform with said requirements.

(a) Corner location: Township 31 North

Range 10 East/West



Section 9

Town/City/Village Ackley

County Langlade

(b) (f) (g) (h) Description of monument found at this corner and if it was accepted, state all evidence (material, testimonial, occupational, plats, records, other monuments) used as a basis for accepting. If not accepted or if nothing was found, state evidence used as basis for establishing location. If reestablished through lost corner proportionate methods, indicate all monuments, distances and directions used to establish. Indicate type of monument found or set and sign post.

-1860 Hiram C. Fellows established original corner....Set 1/4 post B.T.s Linden 14 N48E 77 Links; white pine 10 S89W 47 Links.

-1919 Webley drove iron bolt 3/4 x 3 1/2 ft B.T.s spruce 8 N 73E 100; white pine 7 S 82E 117 1/2.

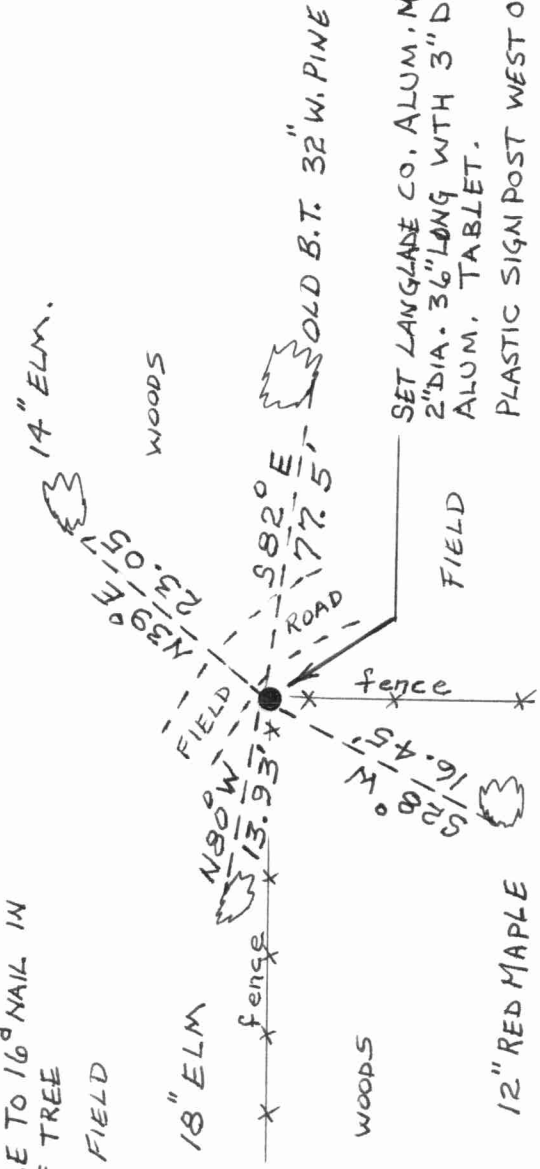
-1994 I found 3/4" eye bolt 3 1/2 ft. below ground at intersection of the fence West and South
B.T. white pine 32" S82oE 77.5 ft. (117 1/2 lks).
I set Langlade Co. aluminum monument 2" dia. 36" long with 3" dia. aluminum tablet. Over iron bolt found. Witnessed monument as shown below.

(c) (d) (e) Plan view of corner with ties to at least 4 witness monuments. If in disagreement with previously established corner, show the distances between the two corners and also indicate the ties to the disputed corner.

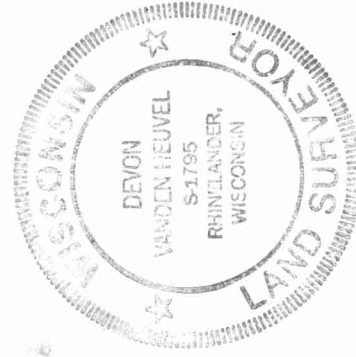
- MAGNETIC BEARINGS TAKEN WITH HANDHELD COMPASS

- DISTANCE TO 16^d NAIL IN SIDE OF TREE

ASSUMED BEARINGS
NO SCALE



Index No. E11



(i) DEVON VANDEN HEUVEL
(type or print name) certify that the corner location on this record was determined by me or under my direction and control and that this U.S. Public Land Survey Monument Record is correct and complete to the best of my knowledge and belief.

Devon Vanden Heuvel 4-3-95

Signature

Date

Stamp