

LANGLADE COUNTY U.S. PUBLIC LAND CORNER RESTORATION

The Southeast corner of Section 4, T. 31 N., R. 10 E., Langlade County, WI.

Corner was: (check all that apply)

- Restored through acceptance of an obliterated evidence location.
- Restored through acceptance of a found perpetuated location.
- Determined to be lost and re-established through proportionate methods.
- Show bearings and distances to PLSS corners used for proportioning, and show original distances).
- Restored/recovered/re-established in a location that differs from a previously established position.
- (Show difference in plan view below).
- Check here if additional information is shown on the reverse side of this form.

4311004 0000

Describe record evidence, recovered physical evidence, occupational evidence, testimonial evidence and all other evidence considered in the recovery/restoration of the corner.

The original corner was established in 1860 by Hiram Fellows. Original bearing trees: birch, 10", N56°E, 5 links and a maple, 12", S56°W, 23 links.
 Webley, around 1920, (FB94-175) said "cor 3-4-9-10 Found old stake, drove pump pipe, 1 1/4" x 40" 08/01/03 I found the top of a 1 1/4" well point, 1.9' below the road surface, leaning NW. Dug further and found the lower portion of the well point to be straight and in good condition. I accepted the well point found as the monument mentioned by Webley and as the best evidence of the corner location. I topped the existing well point with a new 2" x 30" iron pipe with brass cap, flush with the road surface.

Physical description of the monument set:

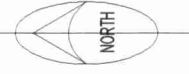
I topped the found well point with a new 2" x 30" galvanized, flared bottom pipe with brass cap set flush with road surface.

Describe the accessories used to perpetuate the corner. Include a plan view drawing and accessories found/set. Describe measuring point on bearing trees. Show any topographic features that would aid in future recovery of the corner.

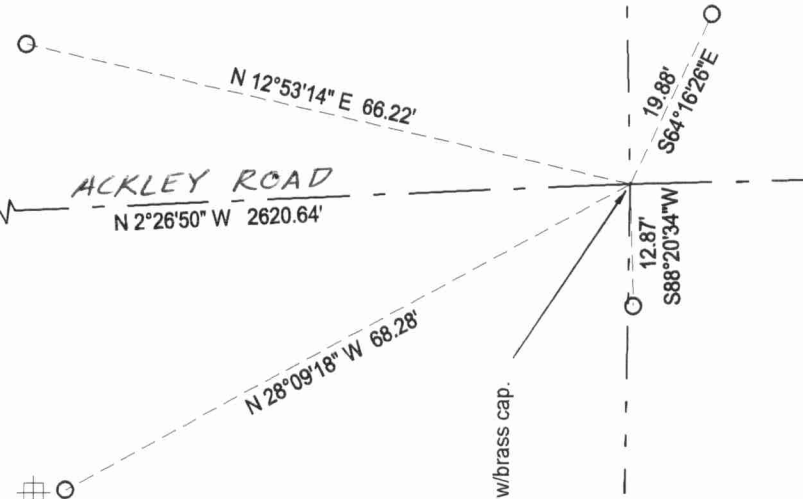
E 1/4 corner, Sec. 4

Found well point, set ip w/brass cap.

Field book: FB20-9



power pole
2.5±



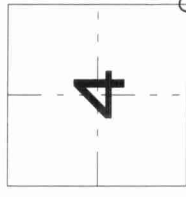
SE corner, Sec. 4

Found well point, set ip w/brass cap.

LEGEND

- 3/4" x 30" rebar set
- All ties measured with total station.

Langlade County Coordinate System grid bearings shown.



○ = corner perpetuated

The Southeast corner of Section 4, T. 31 N., R. 10 E., Langlade County, WI

Index No. E13 31-10

I, David E. Tlusty, Registered Land Surveyor, as Langlade County Surveyor, certify that the corner location on this record was determined by me and that this U.S. Public Land Survey Monument Record is correct to the best of my knowledge and belief.