

LANGLADE COUNTY U.S. PUBLIC LAND CORNER RESTORATION

The South Quarter corner of Section 3, T. 31 N., R. 10 E., Langlade County, WI.

Corner was: (check all that apply)

- Restored through acceptance of an obliterated evidence location.
- Restored through acceptance of a found perpetuated location.
- Determined to be lost and re-established through proportionate methods.
- Show bearings and distances to PLSS corners used for proportioning, and show original distances).
- Restored/recovered/re-established in a location that differs from a previously established position.
- (Show difference in plan view below).
- Check here if additional information is shown on the reverse side of this form.

4311003 0020

Describe record evidence, recovered physical evidence, occupational evidence, testimonial evidence and all other evidence considered in the recovery/restoration of the corner.

The original corner was established in 1860 by Hiram C. Fellows. Original bearing trees: sugar, 8", N51°E, 12 links, and a sugar, 8", S72°W, 10 lks. In 1902, Webley described this corner as a sleigh shoe, 4 1/2' long. 10/06/99 Dave Tlusty, Dean Williams found 3" x 1/2" sleigh shoe, upright and in good condition 3.5" below road surface. Accepted it as the best evidence of the corner location.

Physical description of the monument set:

I topped the sleigh shoe with a new 2" x 30" galvanized, flared bottom pipe with brass cap set flush with road surface. 04/23/03 I set a small nail & flagging in new pavement over the brass cap.

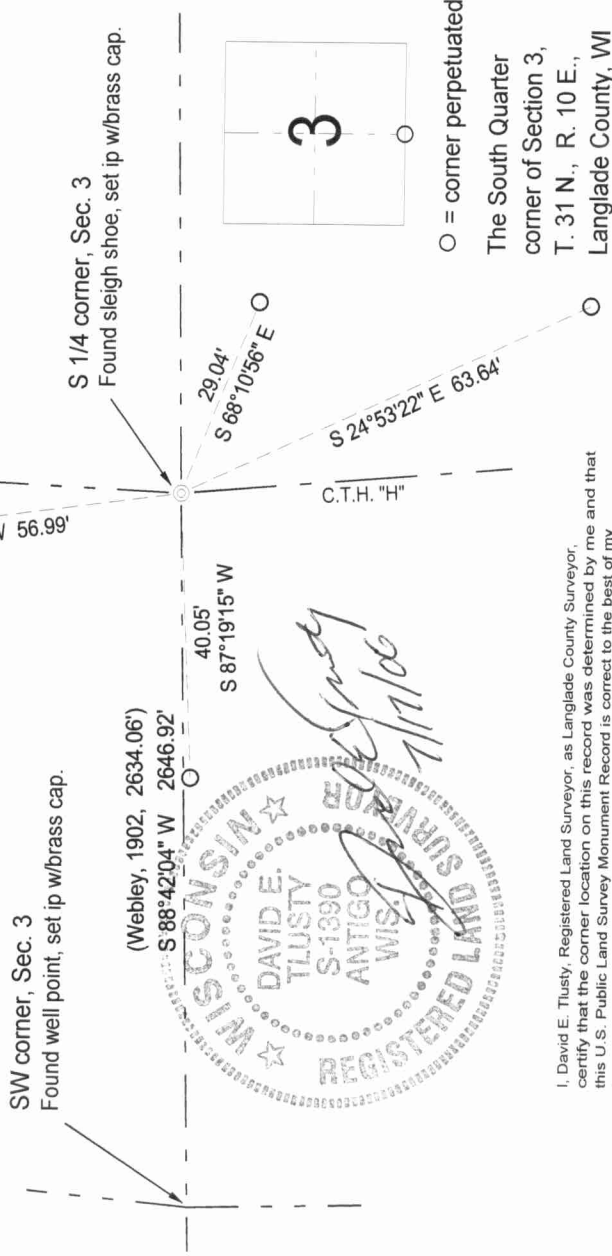
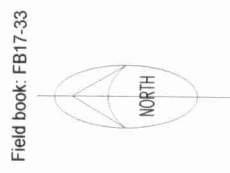
Describe the accessories used to perpetuate the corner. Include a plan view drawing and accessories found/set. Describe measuring point on bearing trees. Show any topographic features that would aid in future recovery of the corner.

LEGEND

- 3/4" x 30" rebar set

All ties measured with total station.

Langlade County Coordinate System grid bearings shown.



Index No. E15 31-10

○ = corner perpetuated
The South Quarter corner of Section 3, T. 31 N., R. 10 E., Langlade County, WI



I, David E. Tlusty, Registered Land Surveyor, as Langlade County Surveyor, certify that the corner location on this record was determined by me and that this U.S. Public Land Survey Monument Record is correct to the best of my knowledge and belief.