

# LANGLADE COUNTY U.S. PUBLIC LAND CORNER RESTORATION

The Southeast corner of Section 3, T. 31 N., R. 10 E., Langlade County, WI.

**Corner was: (check all that apply)**

- Restored through acceptance of an obliterated evidence location.
- Restored through acceptance of a found perpetuated location.
- Determined to be lost and re-established through proportionate methods.
- Show bearings and distances to PLSS corners used for proportioning, and show original distances).
- Restored/recovered/re-established in a location that differs from a previously established position.
- (Show difference in plan view below).
- Check here if additional information is shown on the reverse side of this form.

43110030000

**Describe record evidence, recovered physical evidence, occupational evidence, testimonial evidence and all other evidence considered in the recovery/restoration of the corner.**

The original corner was established in 1860 by Hiram C. Fellows. Original bearing trees: birch, 20", S27°W, 25 links, and a birch, 10", N30°E, 18 lks. In 1919, Webley ran "from E 1/4 corner (S10) north 40.03 pump point 3' x 1 1/4" 20.01 1/2, 1/8 pump point 1 1/4" x 3'"  
07/21/99 D. Tlusty, Dean Williams found 1 1/4" x 12" piece of well point in road. Top is broken (rusted?) off but point is upright and in good shape. Accepted pump point as the best evidence of the corner location.

**Physical description of the monument set:**

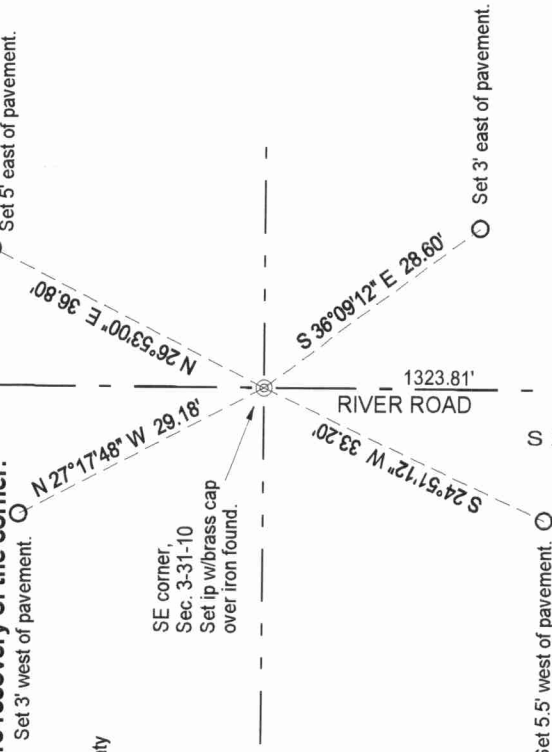
I removed the existing pump point and replace it with a 2" x 30" iron pipe with brass cap flush with road.

**Describe the accessories used to perpetuate the corner. Include a plan view drawing and accessories found/set. Describe measuring point on bearing trees. Show any topographic features that would aid in future recovery of the corner.**

- 3/4" x 30" rebar set
- Bearings referenced to Langlade County Coordinate System grid.

Set 3' west of pavement.

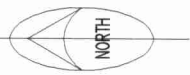
Set 5' east of pavement.



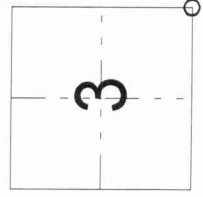
- Set 5.5' west of pavement.
- Set 3' east of pavement.

**LEGEND**  
○ 3/4" x 30" rebar set  
Bearings referenced to Langlade County Coordinate System grid.

Field book: FB17-28



Index No.           E17 31-10          



○ = corner perpetuated  
The Southeast corner of Section 3, T. 31 N., R. 10 E., Langlade County, WI

I, David E. Tlusty, Registered Land Surveyor, as Langlade County Surveyor, certify that the corner location on this record was determined by me and that this U.S. Public Land Survey Monument Record is correct to the best of my knowledge and belief.