

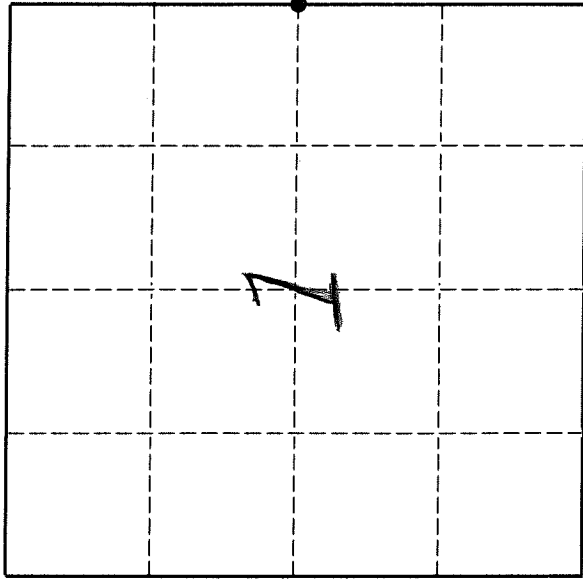
43110012000

U. S. PUBLIC LAND SURVEY MONUMENT RECORD

INSTRUCTIONS:

This record shall show the location of the corner and shall include all of the following nine elements (a through i).

- (a) Identify the corner by reference to the U. S. public land survey system.
- = Corner monument restored.



The East Quarter corner of Section 1, Township 31 North, Range 10 East, Langlade County, Wisconsin.

T. 31 N., R. 10 E.

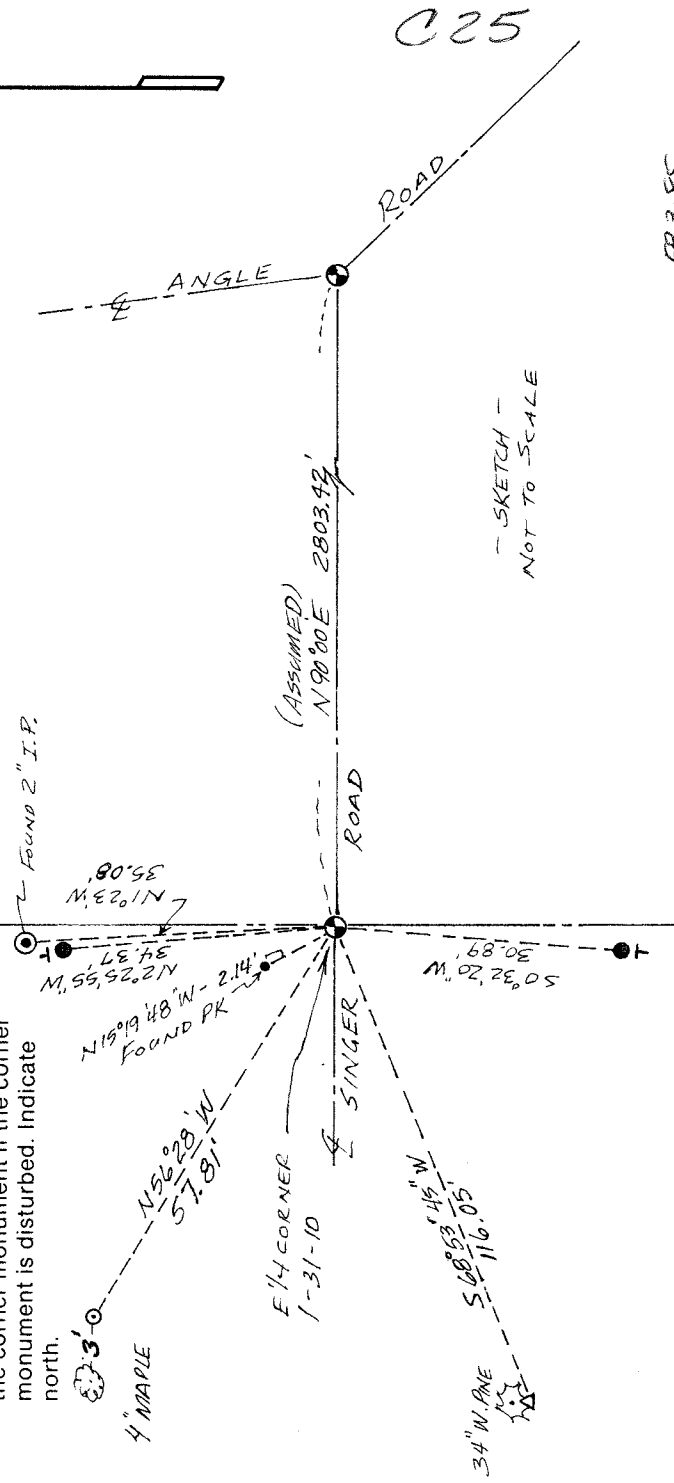
- (b) Describe any record evidence, monument evidence, occupational evidence, testimonial evidence or any other material evidence you considered, and whether the monument was found or placed.
 The original corner was established in 1859 by Hiram C. Fellows, Deputy Surveyor. Original BT's: Birch, 18, S25W, 18 lks, and a sugar, 10", N70E, 12 lks. Around 1909 Brooks did a partial subdivision of Section 6 and found the original BT birch standing. 1969, Robert Poss "Iron pipe - found with dip needle confirmed by Matuszewski & Blasczyk". 11/20/82, former surveyor Kelly on CSM #261812 "PK set over buried corner monument with 2 wit. cors." *Poss also set 2 brass capped wit. mens., 33' north and south. 9/24/92 I dug in road and at 15" below the existing road I found a 1 1/2" x 16" iron pipe, top of which was bent to NW. I removed pipe and find the lower 12" to be vertical and in good condition. At this point, I set a 1 1/2" x 30" re-bar for the corner, top of which is 19" below road surface. 6/10/93 I topped the previously set re-bar with a 1 1/4" x 18" black iron pipe and 4" brass cap flush with road. (continued on reverse)
 In the plan view drawing below, provide reference ties to at least 4 witness monuments, or, if the location is within a municipality, to at least 2 witness monuments. (Witness monuments shall be made of concrete, natural stone, iron or other equally durable material.)
 Describe witness monuments.

- = 1 1/2" OD iron pipe with brass cap set @ = 3/4" x 30" re-bar set
- ▲ = vinyl sign post set within 0.5' of witness
- Δ = 60d nail set upright in root crown on south side of 34" white pine

- (d) Show a plan view drawing depicting the relevant monuments and

reference ties which is sufficient in detail to enable accurate relocation of the corner monument if the corner monument is disturbed. Indicate north.

Bearings referenced to monument found at the intersection of Angle Road and Singer Road to the east as shown below.



SKETCH - NOT TO SCALE

C25

FB 3-85

43110012000

Describe any material discrepancy between the location of the corner as restored or reestablished and the location of that corner as previously restored or reestablished by distance and direction. Show the discrepancy on the plan view drawing under (d), above. Show the distances between the corner as previously restored or reestablished and (1) the corner as restored or reestablished, and (2) to at least 2 of the witness monuments shown on the drawing in (d), above.

6/10/93 (con't) I also found the 2 brass capped wit. mon's. by Poss. by Poss, both bent. I removed them, straightened them and re-set them flush with the ground. I found Kellys PK as shown on sketch. I don't think that Kelly dug out the iron pipe or his nail would have been closer to the pipe I found.

7/16/15 DT RTK GPS MADS3(2011)WISCONS:

N 361384.22 ✓

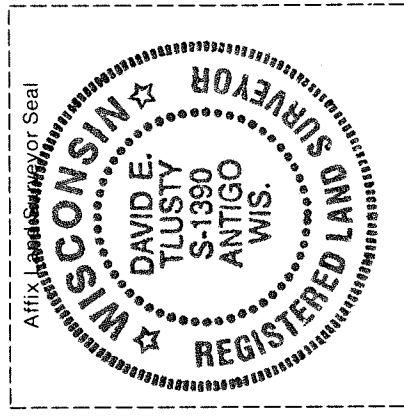
E 613530.24 ✓

1519.9

SET RR SNAKE INSIDE IRON PIPE FIND IN ROAD (BRASS CAP MISSING)

- (f) Was the corner restored through acceptance of (1) an obliterated evidence location, or, (2) a found perpetuated location?
A found perpetuated location.

- (g & h) Was the corner reestablished through lost corner proportionate methods? If so, show the method, including the directions and distances to other public land survey corners used as evidence or used for proportioning in determining the corner location.
No.



(i) I, David E. Tlusty, Langlade County Surveyor
(type or print name)

certify that the corner location shown on this record was determined by me or under my direction and control and that this U.S. Public Land Survey Monument Record is correct and complete to the best of my knowledge and belief.

David E. Tlusty Signature
8/25/13 Date