

# MARATHON COUNTY U.S. PUBLIC LAND SURVEY MONUMENT LOCATION RECORD

Corner Location: Southwest Corner of Section 31

Monument Type: Set 1.0" Aluminum Rod with 3.25" Aluminum Cap

County Coordinate: N 260,386.75 E 365,766.56

Date of Survey: 10/14/2019 Datum: WSCRS Marathon NAD 83 (2011)

Survey Party: John M. Jursa

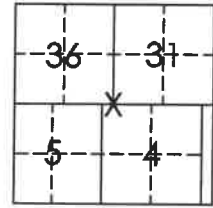
Field Book: Looseleaf Harrison Page Number: Z25

Found   
Set   
Re-set   
Re-Tied

Section 31  
Township 31N  
Range 10E

Z25

Ackley  
City, Village, Town  
Section 43109360000



Location  
(indicated by X)

## BASIS FOR MONUMENT LOCATION:

(Describe method of survey and corner authentication)

6/8/1937 - D.A. Hintz set a 3" Iron Pipe with Brass Cap.

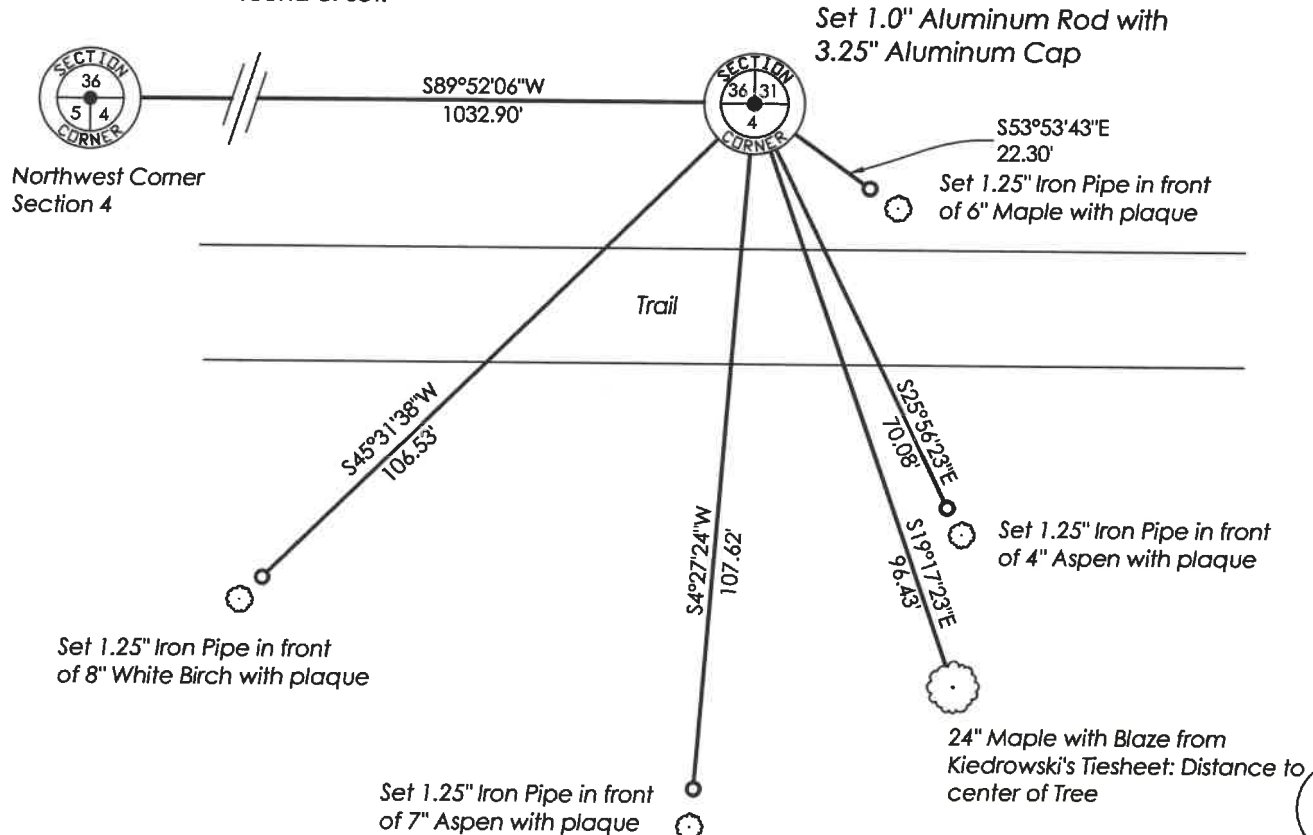
2/7/1978 - Anthony Kiedrowski found the 3" Pipe knocked out and lying on top of ground. He reset pipe by computed traverse from adjacent corners and tied out.

10/14/2019 - I found the 4" Iron Pipe with Brass Cap as described by Kiedrowski completely out of the ground. I found Kiedrowski's 8" Maple bearing tree to the southeast, which is now a 24' Maple, and computed a position using said tree and the record distance on Kiedrowski's section breakdown from the Harrison Monument found marking the northwest corner of Section 4, T30N R10E. I set a 1.0" Aluminum Rod with 3.25" Aluminum Cap at the calculated position and tied out as shown below.



*[Signature]*  
John M. Jursa, PLS-3201  
Date: 10/31/2019

**TIE SKETCH:** Show minimum of four (4) horizontal tie distances to fixed witness monuments. Describe all monuments found or set.



Z25