

# MARATHON COUNTY U.S. PUBLIC LAND SURVEY MONUMENT LOCATION RECORD

Corner Location: Southeast Corner of Section 35

Monument Type: Set 1.0" Aluminum Rod with 3.25" Aluminum Cap

County Coordinate: N 260,375.63 E 360,473.91

Date of Survey: 10/11/2019 Datum: WSCRs Marathon NAD 83 (2011)

Survey Party: John M. Jursa

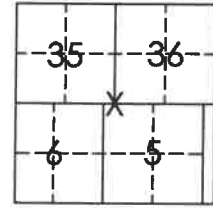
Field Book: Looseleaf Harrison Page Number: Z21

Found   
Set   
Re-set   
Re-Tied

Section 35  
Township 31N  
Range 10E 9E

Z21

Ackley  
City, Village, Town  
Section 4310935 0000



Location  
(indicated by X)



John M. Jursa, PLS-3201

Date: 10/31/2019

## BASIS FOR MONUMENT LOCATION:

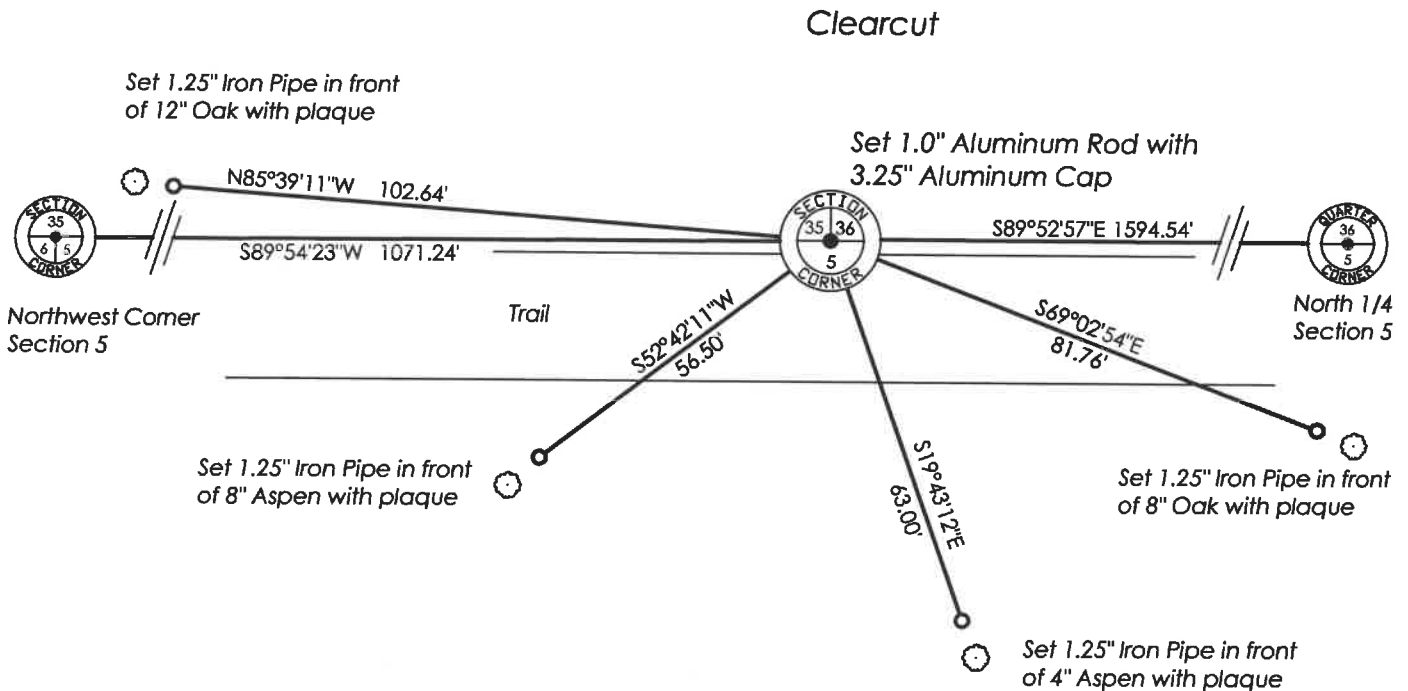
(Describe method of survey and corner authentication)

1930 - Corner set in 1930 resurvey.

10/30/1976 - Raymond J. Hallisay found a 4" Brass Cap and tied out.

10/11/2019 - I found a 4" Iron Pipe with 4" Brass Cap completely out of the ground with no ties remaining. I set a 1.0" Aluminum Rod with 3.25" Aluminum Cap on a single proportion from the found Harrison Monument at the Northwest Corner of Section 5 and the found Harrison Monument at the North 1/4 Corner of Section 5, T30N R10E based upon the section breakdown from Kiedrowski's Marathon County Forest Map for Sections 5 & 6 dated March 27, 1978 which can be found on file at the Marathon County Surveyor's Office. I set out four new ties as shown below.

**TIE SKETCH:** Show minimum of four (4) horizontal tie distances to fixed witness monuments found or set. Describe all monuments found or set.



Z21