

CERTIFIED LAND CORNER RESTORATION

Index No. Z-21

State of Wisconsin }  
County of Langlade } ss.

I Raymond J. Hallisy, do hereby certify that on the 30th day of October, 1976, I found evidence of the section corner of Sec. 35 & 36 Township 31, North, Range 9E, Fourth Principal Meridian, as described hereon; and that from this evidence I established a new monument and accessories as described hereon to perpetuate the original location of this corner.

Resident witnesses:

.....  
.....  
.....

History of original corner establishment:

Corner set in the 1930 resurvey.

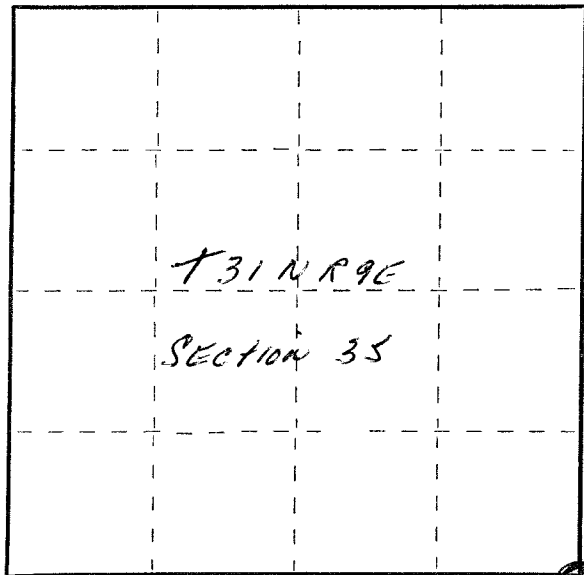
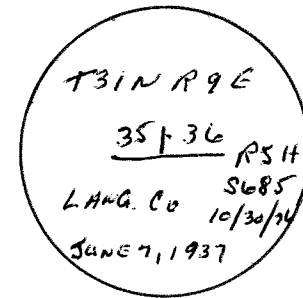
Description of corner evidence found:

4" ~~XXX~~ Brass cap

Description of monument and accessories I established to perpetuate the original location of this corner.

New BT's

- 1" Red Maple S89W 23.4 Ft.
- 8" Red Maple S18W 24.5 Ft.
- 1 1/4" Red Maple S88E 49.5 Ft.



○ = Corner monument restored.

Dated at Antigo, Wis., this 30th day of October, 1976

Signature Raymond J. Hallisy Title Land Surveyor Registration No. S685  
(County Surveyor, Registered Land Surveyor, or other duly authorized official)

Office of Register of Deeds, County of....., I hereby certify that the within instrument was filed in this office for record on the..... day of....., 19..... at..... o'clock..... M.

.....  
(Register of Deeds)  
By..... Deputy

FORM 985 H. C. MILLER CO., MILWAUKEE

43109350000