

**LANGLADE COUNTY U.S. PUBLIC LAND
SURVEY MONUMENT LOCATION RECORD**

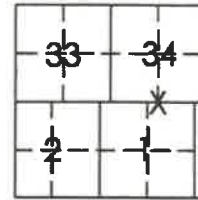
Corner Location: South Quarter Corner of Section 34
 Monument Type: Found 4" Iron Pipe
 County Coordinate: N 260,358.74 E 352,533.52
 Date of Survey: 7/12/2019 Datum: WSCRs Marathon NAD 83 (2011)
 Survey Party: John M. Jursa
 Field Book: Looseleaf Hewitt Page Number: Z 15

Found
 Set
 Re-set
 Re-Tied

Section 34
 Township 31N
 Range 9E

(Z15)

Ackley
~~City, Village, Town~~
4310934 0020 2019
 Section



Location (indicated by X)

BASIS FOR MONUMENT LOCATION:

(Describe method of survey and corner authentication)

June, 1851 - James Marsh set post for original corner.

June, 1937 - D.A. Hintz set 3" Iron Pipe with Brass Cap.

2/21/1978 - Anthony Kiedrowski found existing 3" Iron Pipe and set four ties to trees.

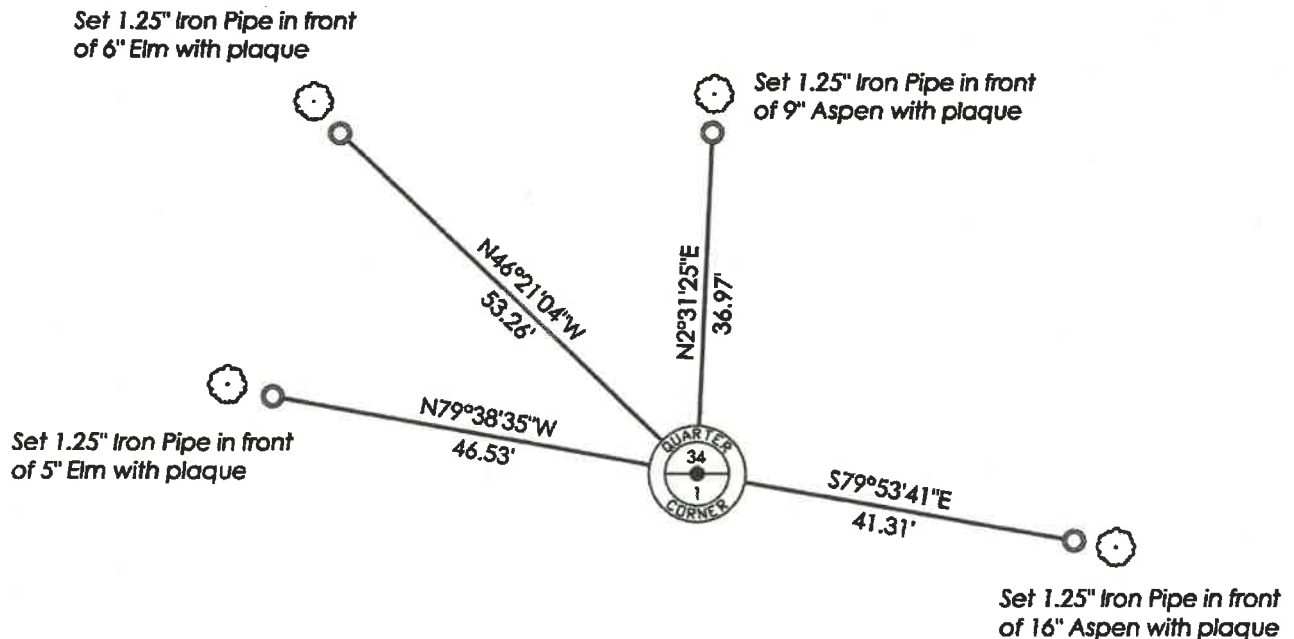
6/7/2019 - Found the 4" Iron Pipe and Brass Cap as described by Kiedrowski. Monument was leaning over. Stood upright at point of entry and accepted as at the corner position. No ties remained. Set four new ties and measured as shown below.

8/5/19 D. TRUSTY CONJUNCTED ABOVE
 MARATHON CO COORDS TO LANGLADE:
 N
 E



John M. Jursa
 John Jursa, PLS-3201
 Date: 7/31/2019

TIE SKETCH: Show minimum of four (4) horizontal tie distances to fixed witness monuments. Describe all monuments found or set.



Open Brush

(Z15)