

**LANGLADE COUNTY U.S. PUBLIC LAND
SURVEY MONUMENT LOCATION RECORD**

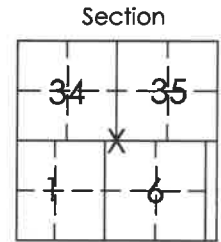
Corner Location: Southeast Corner of Section 34
 Monument Type: Found 2.5" Iron Pipe with 3.0" Brass Cap
 County Coordinate: N 260,364.60 E 355,180.64
 Date of Survey: 9/19/2019 Datum: WSCRS Marathon NAD 83 (2011)
 Survey Party: John M. Jursa
 Field Book: Looseleaf Hewitt Page Number: Y17

Found
 Set
 Re-set
 Re-Tied

Section 34
 Township 31N
 Range 9E

Y17

Ackley
 City, Village, Town



Location (indicated by X)

BASIS FOR MONUMENT LOCATION:

(Describe method of survey and corner authentication)

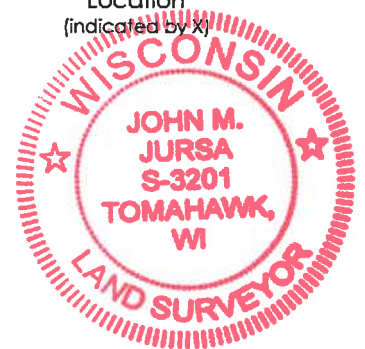
1930's - Hintz set a monument at an old scribed stake that was found.

1978 - Anthony Kiedrowski did not find Hintz's monument and set a 2" Iron Pipe with Brass Cap at proportionate distance and tied out.

2002 - Dave Tlusty found Kiedrowski's monument frost-heaved out of ground and re-established position from 3 remaining ties set by Kiedrowski.

11/28/2007 - Dave Tlusty re-set the 2" X 42" Iron Pipe that had previously been set by Kiedrowski in place of the nail and re-measured BT's.

9/19/2019 - I found a 2.5" Iron Pipe with 3" Cap as described by Tlusty. I found three ties that were overgrown and set new ties as shown below.



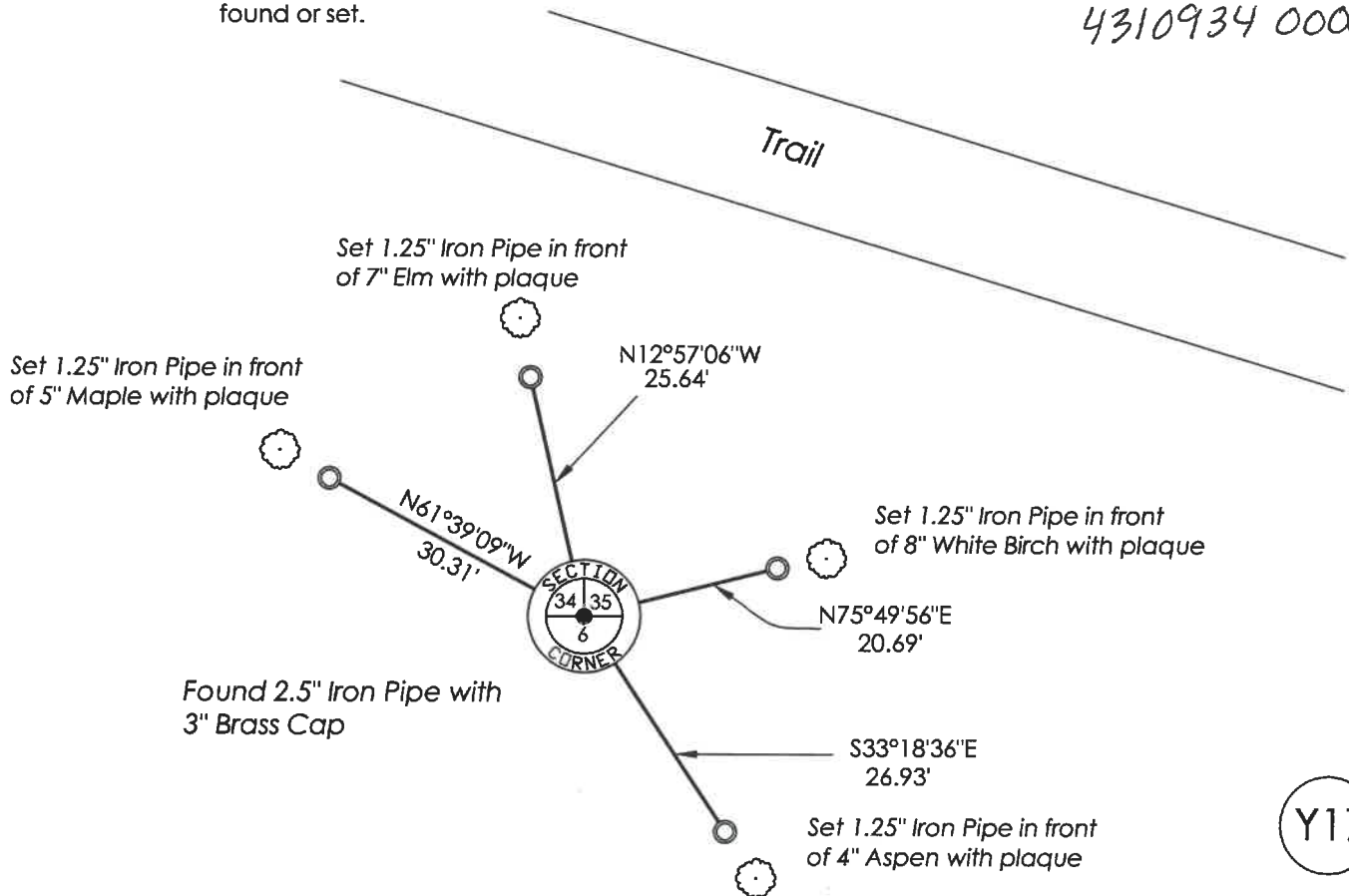
[Signature]

John M. Jursa, RLS-3201

Date: 9/30/2019

TIE SKETCH: Show minimum of four (4) horizontal tie distances to fixed witness monuments found or set.

4310934 0000



Y17