

MARATHON COUNTY U.S. PUBLIC LAND SURVEY MONUMENT LOCATION RECORD

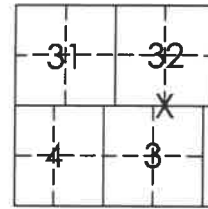
Corner Location: South 1/4 Corner of Section 32
 Monument Type: Set 1" Aluminum Rod with 3.25" Cap
 County Coordinate: N 260,347.79 E 341,950.41
 Date of Survey: 9/26/2019 Datum: WSCRs Marathon NAD 83 (2011)
 Survey Party: John M. Jursa
 Field Book: Looseleaf Harrison Page Number: Y7

Found
 Set
 Re-set
 Re-Tied

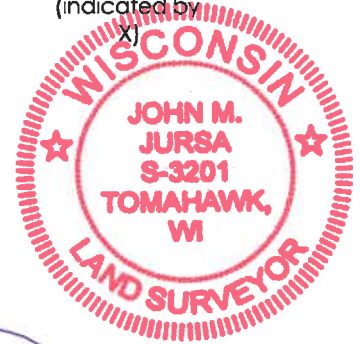
Section 32
 Township 31N
 Range 9E

Y7

Ackley
 City, Village, Town
 Section



Location
(indicated by X)



BASIS FOR MONUMENT LOCATION:

(Describe method of survey and corner authentication)

1937 - Darwin Hintz found no evidence of original corner and set a 3" Iron Pipe with Brass Cap by proportionate methods.

1978 - Anthony Kiedrowski found the 3" Iron Pipe with Brass Cap and tied out.

11/13/2002 - Dave Tlusty found the 3" Iron Pipe with Brass Cap and one remaining tie from Kiedrowski. Pipe was frost-heaved and he straightened it up and set small mound of stones around it. He set new bearing trees.

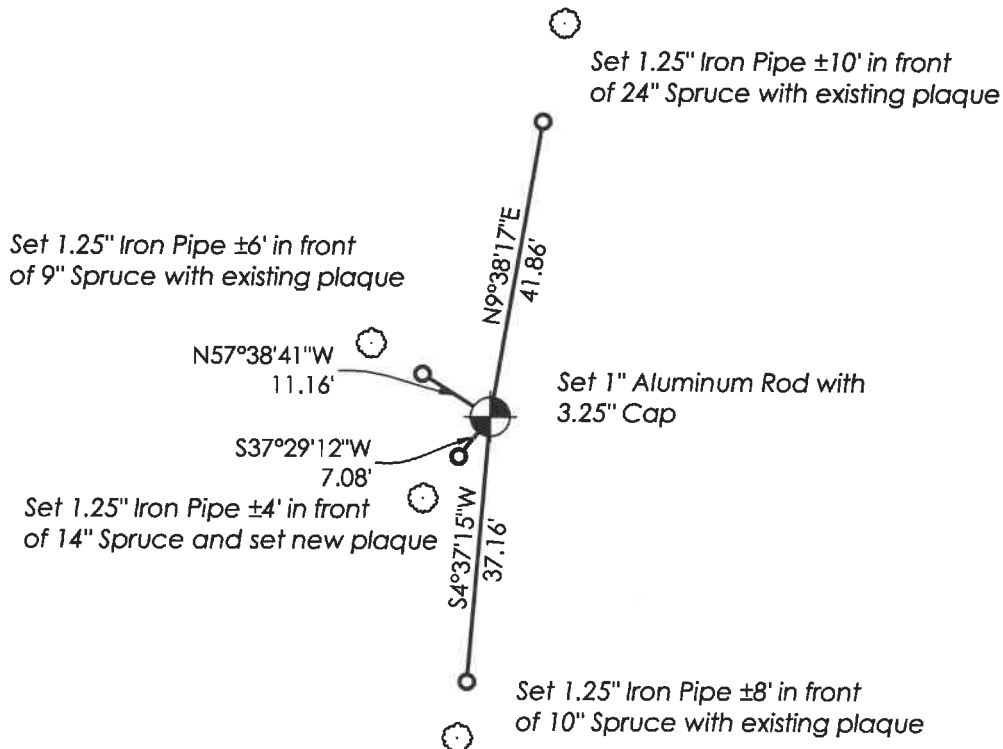
9/26/2019 - I found the 4" Iron Pipe with 4" Brass Cap as described by Tlusty. I found it to be loose in mound of stones although a definite point of entry could be ascertained. I removed the 4" Iron Pipe and replaced with a 1" Aluminum Pipe with 3.25" Aluminum Cap at the point of entry. I set pipes in front of existing trees that had been tied out as shown below.

John M. Jursa, PLS-3201

Date: 9/30/2019

TIE SKETCH: Show minimum of four (4) horizontal tie distances to fixed witness monuments. Describe all monuments found or set.

4310932 0020



Y7