

LANGLADE COUNTY U.S. PUBLIC LAND CORNER RESTORATION

The South Quarter corner of Section 32, T. 31 N., R. 9 E., Langlade County, WI.

Corner was: (check all that apply)

- Restored through acceptance of an obliterated evidence location.
- Restored through acceptance of a found perpetuated location.
- Determined to be lost and re-established through proportionate methods.
- Show bearings and distances to PLSS corners used for proportioning, and show original distances).
- Restored/~~recovered~~/re-established in a location that differs from a previously established position.
- (Show difference in plan view below).
- Check here if additional information is shown on the reverse side of this form.

4 3109 320020

Describe record evidence, recovered physical evidence, occupational evidence, testimonial evidence and all other evidence considered in the recovery/restoration of the corner.

The original corner was established in 1851 by James M. Marsh. Original bearing trees: hemlock, 12", N85°E, 31 links; hemlock, 8", N62°E, 45 links; sugar, 8", N9°W, 37 links and a sugar, 8", N40°W, 12 links. Brooks, 1906: "orig BT's all gone but sugar 10 N9W 37 lks". Brooks surveyed in Section 32. In 1937, Darwin Hintze found no evidence of the corner and re-set it by proportionate methods. Set 3" iron pipe with brass cap stamped to identify corner. In 1978, Tony Kiedrowski: "Found existing 3" iron pipe with brass cap" and marked new bearing trees. 11/13/02 D. Tlusty, D. Williams found iron pipe with brass cap and one remaining Kiedrowski bearing tree. Re-set monument & marked new bearing trees as shown below. Langlade County Coordinates by direct RTK GPS observation on corner monument and checked with two short ties shown below.

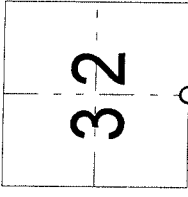
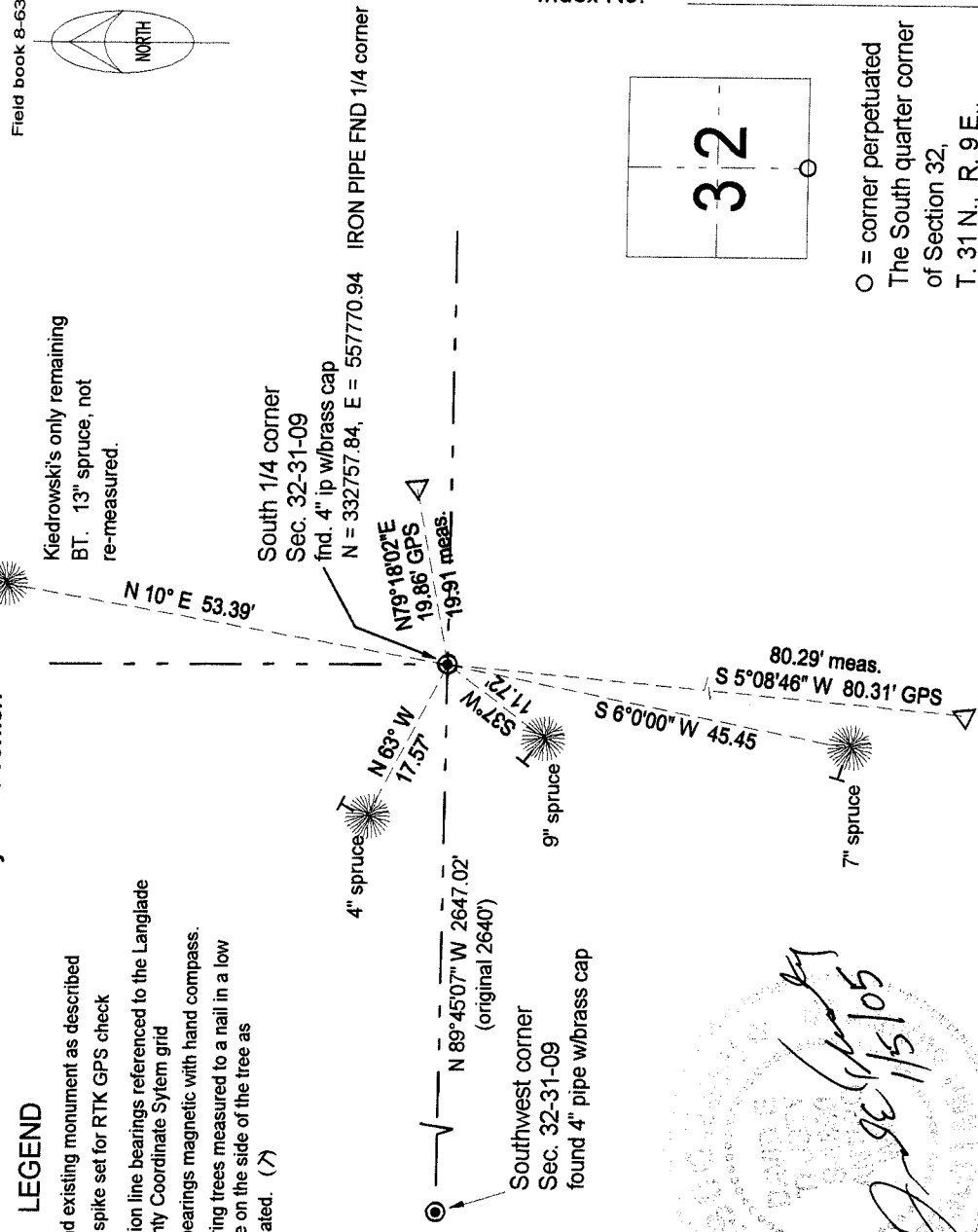
Physical description of the monument set:

Existing 4" iron pipe found frost heaved. Straightened and set small mound of stones around it. Set white vinyl sign post 1.2' north of corner monument.

Describe the accessories used to perpetuate the corner. Include a plan view drawing and accessories found/set. Describe measuring point on bearing trees. Show any topographic features that would aid in future recovery of the corner.

LEGEND

- found existing monument as described
- △ 60d spike set for RTK GPS check
- Section line bearings referenced to the Langlade County Coordinate System grid
- BT bearings magnetic with hand compass.
- Bearing trees measured to a nail in a low blaze on the side of the tree as indicated. (↗)



○ = corner perpetuated
The South quarter corner of Section 32,
T. 31 N., R. 9 E.,
Langlade County, WI

David E. Tlusty
 Registered Land Surveyor
 Wisconsin
 No. 10515

I, David E. Tlusty, Registered Land Surveyor, as Langlade County Surveyor, certify that the corner location on this record was determined by me and that this U.S. Public Land Survey Monument Record is correct to the best of my knowledge and belief.

Index No. Z7 31-09

Field book 8-63

