

CERTIFIED LAND CORNER RESTORATION

Index No. Z-9

State of Wisconsin }
County of LANGLADE } ss.

I ANTHONY B. KIEDROWSKI do hereby certify that on the FIRST day of DECEMBER, 1977, I found evidence of the SOUTHWEST corner of SECTION 33 Township 31, North, Range 9, Fourth Principal Meridian, as described hereon; and that from this evidence I established a new monument and accessories as described hereon to perpetuate the original location of this corner.

Resident witnesses:

.....
.....
.....

History of original corner establishment:

- June 22, 1851 - James Marsh set wood post during original survey.
- June 9, 1937 - D. A. Hintz set monument according to the instructions by the U.S. Government, while surveying the eight miles of line between the SW corner of Section 32, T31N, R9E and the SE corner of Section 33, T31N, R10E.

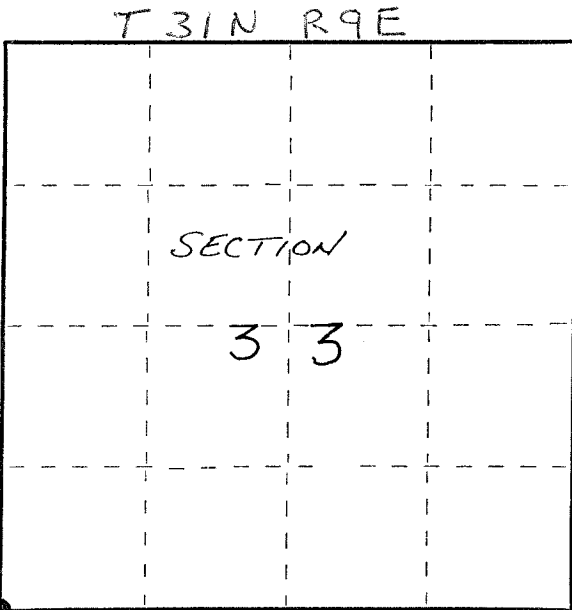
Above notes are filed at the Langlade County Surveyor's Office at Antigo, Wi.

Description of corner evidence found:

A three inch iron pipe with a stamped brass cap was found in place. A sketch of the brass cap is shown on the reverse side.

Description of monument and accessories I established to perpetuate the original location of this corner.

See sketch on reverse side.



● = Corner monument restored.



Dated at Wisc. Rapids, Wis., this 5th day of December, 1977.

Signature AB Kiedrowski Title CLS Registration No. S-878
(County Surveyor, Registered Land Surveyor, or other duly authorized official)

Office of Register of Deeds, County of Langlade, I hereby certify that the within instrument was filed in this office for record on the day of, 19..... at o'clock M.

.....
(Register of Deeds)

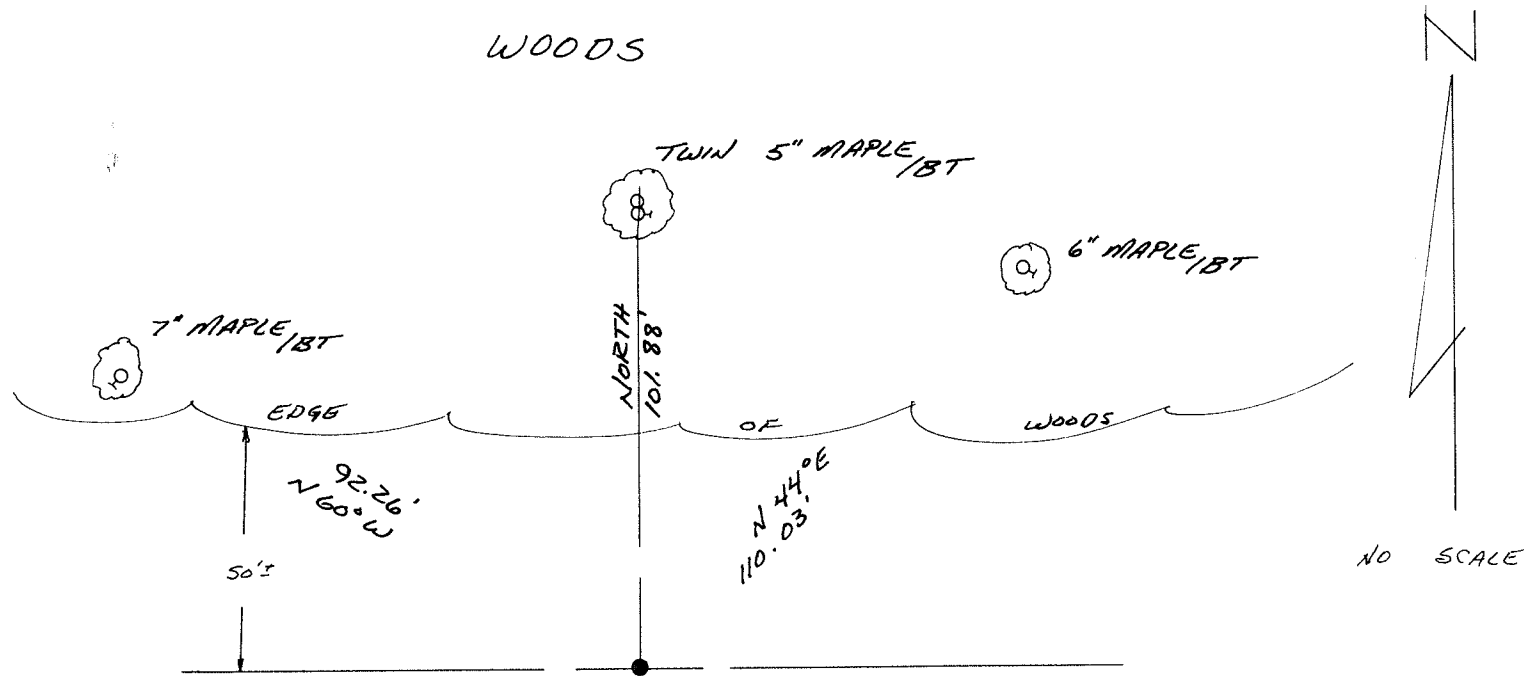
By..... Deputy

FORM 985 H. C. MILLER CO., MILWAUKEE

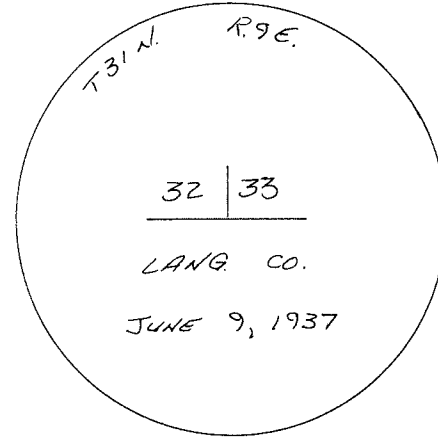
43109320000

43109320000

WOODS



NO SCALE



Mon. FOUND

CUT-OVER AREA

NOTES:

Tie distances are to a nail and disc driven into the bearing tree.
Trees bear a blaze and scribing and a location poster.

